



RETENTION AND GRADUATION RATES AT MARYLAND FOUR-YEAR INSTITUTIONS

December 2012



MARYLAND HIGHER EDUCATION COMMISSION

Anwer Hasan, Chairman

Sandra L. Jimenez, Vice-Chair

Brandon G. Bell

Vivian S. Boyd

Lisa Latour

Ian MacFarlane

Chung K. Pak

Edith J. Patterson

Gregory A. Schuckman

Rizwan A. Siddiqi

John W. Yaeger

Danette Gerald Howard

Secretary of Higher Education

Martin O'Malley

Governor

Anthony G. Brown

Lt. Governor

Table of Contents

I. Introduction	1
II. Analyses and Discussion	3
Maryland Four-Year Public Institutions	
Six-Year Graduation Rates	
By Race and Ethnicity	
By Gender	
Second-Year Retention Rates	
By Race and Ethnicity	
By Gender	
Maryland State-Aided Independent Institutions	
Six-Year Graduation Rates	
Second-Year Retention Rates	
III. Conclusion	10
IV. Tables	
Statewide Tables	12
Institutional Tables	24
All Students	
All Students by Racial and Ethnic Background	
African American Students	
White Students	
Asian Students	
Hispanic Students	
All Students by Gender	
Male Students	
Female Students	
State-Aided Independent Institutions	88

INTRODUCTION

This report presents data on the retention and graduation rates of first-time, full-time undergraduate students in the state of Maryland. The graduation trends in this report include undergraduate students who remained and graduated from the campus at which they initially enrolled, as well as those who transferred to and then graduated from any of the four-year colleges or universities, including independent institutions, in the state of Maryland. This analysis features six-year graduation rates, or the percentage of students who receive a bachelor's degree within six years of initial enrollment. The four- and five-year graduation rates are included in the tables beginning on page 12. The retention rates in this report include the percentage of first-time, full-time students who remained enrolled at the same institution in subsequent fall semesters. This analysis also includes second-year retention rates, or those students who enroll for a second consecutive fall semester.

The new data presented in this report are for the 2005 through 2010 entering cohorts of undergraduate students enrolled in Maryland's public and independent four-year institutions. These data are disaggregated by gender, racial/ethnic group, and institution. Cohorts are defined by year of entry (first-time enrollment). The six-year graduation rate for the 2005 cohort measures the number of students who entered Maryland higher education in fall 2005 and graduated before fall 2011. The second-year retention rate of the 2010 cohort measures the number of Maryland students who enrolled in higher education for the first time in fall 2010 and were still enrolled in fall 2011.

During the 2009-2010 academic year, a total of 28,701 bachelor's degrees were awarded at Maryland public and independent institutions. The largest proportions of these degrees were awarded to white (58.3%), African American (19.1%), Asian (8.1%), and Hispanic (4.7%) students. Students who self-identified as two or more races accounted for 1.4% while Native American and Pacific Islander students, combined, accounted for 0.6% of all degrees awarded.

The first section of this report presents data on undergraduate students entering Maryland's public four-year colleges and universities¹ from 1990 to 2010. For the first time, this report includes four-year graduation rate data for the University of Baltimore (UB). Before 2007, UB did not enroll first-time undergraduate students. Six-year graduation rates for UB will be available beginning in 2014. The second section of this report presents the 2010 cohort retention rates and 2005 cohort graduation rates for Maryland residents who entered one of the state's

¹ Data for the University of Maryland, Baltimore and the University of Maryland University College have been excluded. The University of Maryland, Baltimore is excluded because it does not enroll first-time students. The University of Maryland University College is excluded due to its mission to serve the adult, part-time population.

² IPEDS Federal Graduation Rate Survey (GRS): In 1990, Congress enacted the Student Right-to-Know Act (SRTK) which

independent postsecondary institutions. All data in this report comes from MHEC Enrollment and Degree Information Systems unless otherwise noted.

Beginning with the entering class of 1996, MHEC has aligned its retention and graduation reporting with the IPEDS Federal Graduation Rate Survey² (GRS), which includes the data collection and reporting requirements listed below:

- The method used to match student enrollment and degree attainment is based on the federal GRS procedures and on the recommendations of an inter-segmental workgroup.
- Prior to the 1996 cohort, students who enrolled at multiple institutions were reported at only one campus on a randomly selected basis. Currently, cross-enrolled students are included more than once within a cohort.
- When institutions report a new social security number for a student, the student is tracked on the basis of the *new* number. In earlier cohorts, students with new social security numbers were treated as no longer enrolled or dropped from an institution. This process mostly affects institutions enrolling a large number of international students, who often are assigned “dummy” social security numbers upon initial enrollment.

² IPEDS Federal Graduation Rate Survey (GRS): In 1990, Congress enacted the Student Right-to-Know Act (SRTK) which requires colleges and universities to disclose the rate students complete academic programs at postsecondary education institutions. The GRS is the federal data collection instrument for four-year postsecondary institutions.

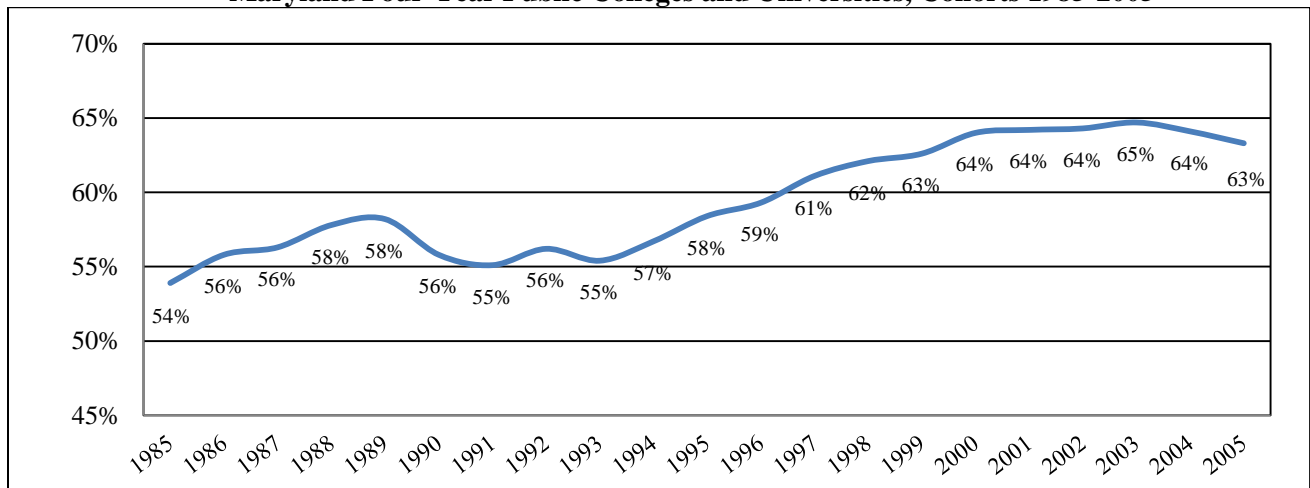
ANALYSIS AND DISCUSSION

Maryland Four-Year Public Institutions

Six-Year Graduation Rates

- The six-year graduation rate for first-time, full-time students declined to 63.3% for the 2005 cohort from 64.1% for the 2004 cohort (see Figure 1).
- The six-year graduation rate decreased at all public four-year institutions except Bowie State University, and St. Mary's College of Maryland, which both experienced increases.
- Among four-year public institutions, the following institutions had the highest six-year graduation rates for the 2005 cohort: St. Mary's College of Maryland (82.4%); the University of Maryland, College Park (82.3%); Salisbury University (71.6%); and Towson University (68.7%).

Figure 1: Trends in the Six-Year Graduation Rate by Entering Cohort at Maryland Four-Year Public Colleges and Universities, Cohorts 1985-2005



Graduation Rates by Race and Ethnicity

- The six-year graduation rate for African American students was 42.2% for the 2005 cohort (see Table 1). This is an increase from 41.1% for the 2004 cohort. The statewide graduation rate among African Americans has decreased in four of the past six years since reaching 47.5% with the 1999 cohort.

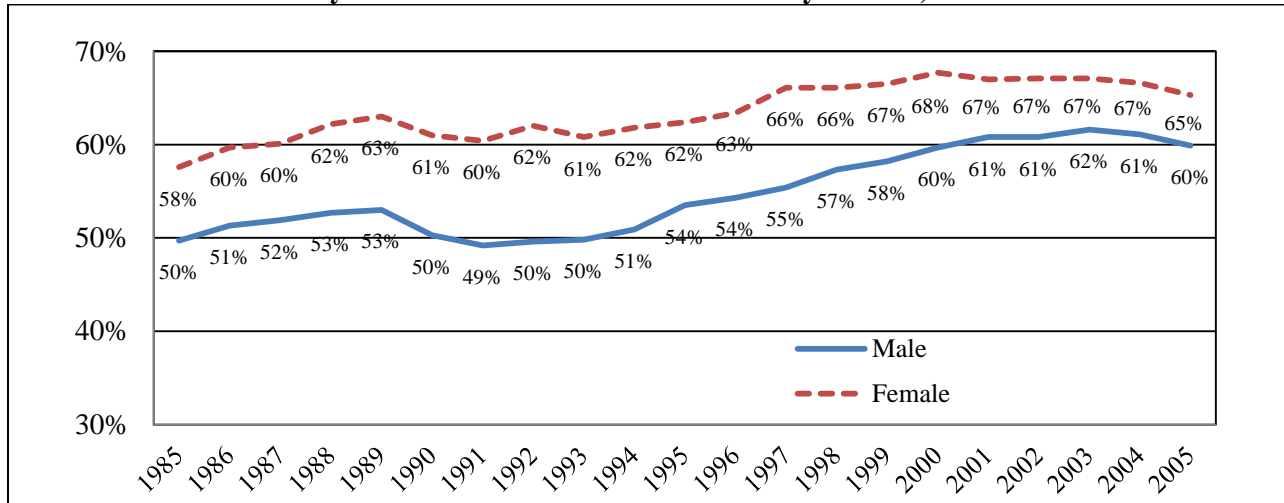
- The highest graduation rates among African American students were at the following public four-year institutions: St. Mary’s College of Maryland (76.5%); the University of Maryland, College Park (74.7%); the University of Maryland Baltimore County (62.9%); and Salisbury University (62.8%).
- Across all racial and ethnic groups, statewide graduation rates were highest for white (74.1%) and Asian (73.6%) students. However, this is the second consecutive decline in graduation rates for each of these groups. The statewide graduation rate for white students was 76.4% among the 2003 cohort, and the rate for Asian students was 77.0% among the 2003 cohort.

Table 1: Trends in Six-Year Graduation Rates by Entering Cohort at Maryland Four-Year Public Institutions by Race and Ethnicity, 1985-2005							
	1985	1990	1995	2000	2005	5 yr. change	20 yr. change
All Students	53.9%	55.8%	58.4%	64.0%	63.3%	- 0.7%	+9.4%
African American	32.2%	38.6%	43.1%	45.1%	42.2%	- 2.9%	+10.0%
Asian	62.5%	65.0%	68.1%	75.2%	73.6%	- 1.6%	+11.1%
Hispanic	54.3%	50.7%	52.1%	67.0%	61.4%	- 5.6%	+7.1%
White	60.6%	64.5%	67.1%	72.2%	74.1%	+1.9%	+13.5%

Graduation Rates by Gender

- Consistent with the national trend, the 65.3% graduation rate for female undergraduates attending public four-year universities in Maryland exceeded the 59.9% graduation rate for their male peers (see Figure 2).
- For both men and women, the rate for the 2005 cohorts was lower than the previous cohort. The 2005 graduation rate for female students declined 1.3% from 2004 and by 1.8% since 2003. Similarly, the graduation rate for male students declined 1.2% from 2004 and by 1.7% since 2003.

Figure 2: Trends in Six-Year Graduation Rates by Entering Cohort at Maryland Four-Year Public Institutions by Gender, 1985-2005

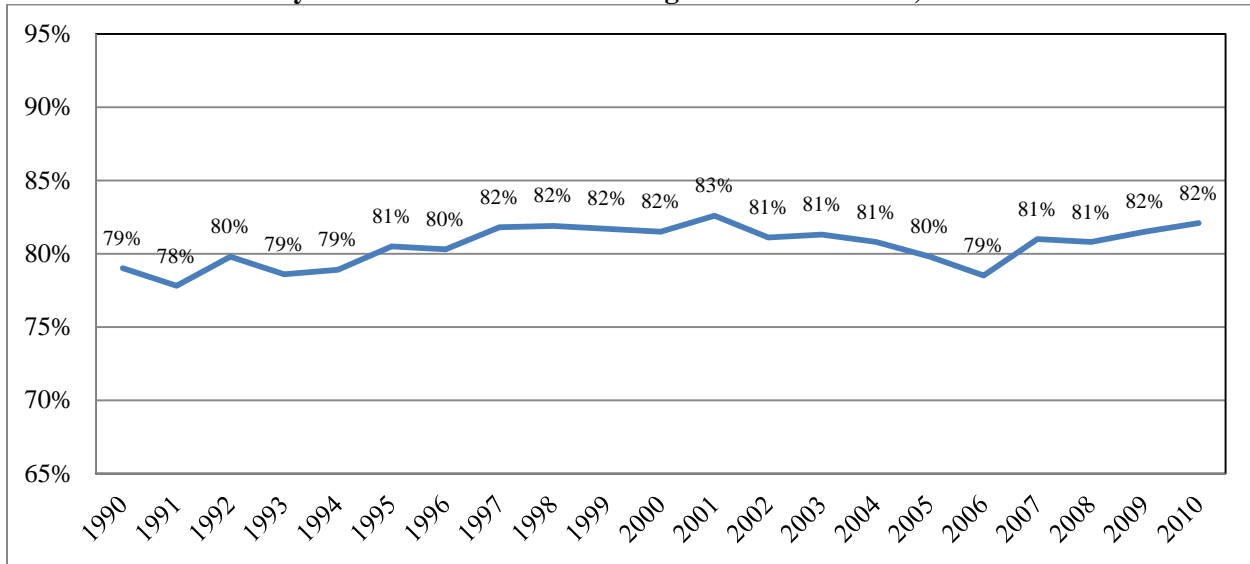


- A decade of graduation trend data has revealed that the gap between male and female students in the state has been gradually narrowing. An 8.9 percentage point disparity separated female and male graduation rates for the 1995 cohort. However, this difference reduced to 5.4 percentage points for the 2005 cohort (65.3% for female students and 59.9% for male students).
- The six-year graduation rate for African American male students decreased to 35.9% from last year's rate of 36.4%. Contrastingly, the graduation rate for African American female students increased to 46.0% for the 2005 cohort from 44.1% for the 2004 cohort.
- The six-year graduation rate for the 2005 cohort of Hispanic females sharply decreased to 61.7% from 73.4%. However, retention rates for this demographic group have gradually improved among more recent cohorts, indicating that the six-year graduation rate will likely improve next year. The rate for Hispanic males increased to 61.1% from 57.4%.

Second-Year Retention Rates

- The second-year retention rate for first-time, full-time undergraduates at public institutions in Maryland was 82.1% for the 2010 cohort, which was a slight increase from the 2009 cohort rate of 81.5%. This is the highest rate since the 2001 cohort (see Figure 3).

Figure 3: Trends in the Second-Year Retention Rates by Entering Cohort at Maryland Four-Year Public Colleges and Universities, 1990-2010



- The four-year public institution with the highest second-year retention rate for the 2010 cohort was the University of Maryland, College Park. The University’s retention rate of 94.2% marked a slight decline from the 2009 cohort rate of 94.8%, which is the University’s highest retention rate on record.
- The following five public four-year institutions experienced gains in their second-year retention rates: Bowie State University (73.5% from 70.4%), Coppin State University (63.6% from 60.4%), Morgan State University (72.3% from 67.5%), Salisbury University (82.0% from 80.5%), and the University of Maryland Eastern Shore (67.8% from 64.4%).

Second-Year Retention Rates by Race and Ethnicity

- In the 2010 cohort, Asian students achieved the highest second-year retention rate (89.4%) of all racial and ethnic groups (see Table 2).
- The second-year retention rate for white students declined to 85.6% in the 2010 cohort from 86.5% in the 2009 cohort. Similarly, the retention rate for Hispanic students declined to 83.6% from 84.8% and Asian students decreased to 89.4% from 90.1%. The 2009 cohort had the highest retention rates on record for Hispanic and Asian students and the second-highest on record for white students.

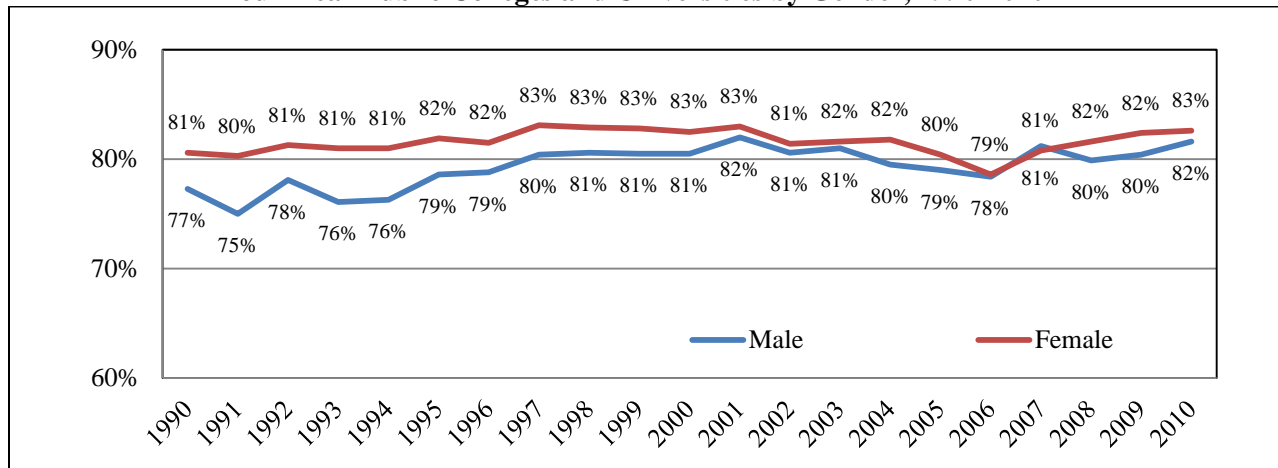
Table 2: Trends in Second-Year Retention Rates by Entering Cohort at Public Four-Year Institutions by Racial/Ethnic Group, Cohorts 1990-2010					
	1990	1995	2000	2005	2010
All Students	79.0%	80.5%	81.5%	79.8%	82.1%
African American	73.6%	77.7%	74.9%	72.2%	75.8%
Asian	85.0%	85.5%	86.8%	86.3%	89.4%
Hispanic	75.4%	80.5%	83.8%	78.9%	83.6%
White	81.8%	82.0%	84.2%	83.5%	85.6%

- The statewide second-year retention rate for African American students in the 2010 cohort increased to 75.8% from 71.8%. This is the highest retention rate since the 1999 cohort. African American students were the only racial or ethnic group to increase second-year retention. The highest retention rates for African American students were at the University of Maryland, College Park (93.6%); St. Mary’s College of Maryland (86.5%); and Towson University (84.6%).
- The retention rates for African Americans attending Maryland’s historically Black institutions (HBIs) increased as follows: to 69.0% from 65.7% at the University of Maryland Eastern Shore; to 66.3% from 59.7% at Coppin State University; to 72.8% from 67.3% at Morgan State University; and to 74.4% from 70.8% at Bowie State University. For Coppin State University, Morgan State University, and Bowie State University, these numbers reflect the highest rates these institutions have achieved in at least five years.

Second-Year Retention Rates by Gender

- With the exception of students in the 2007 cohort, female students have consistently attained higher second-year retention rates than their male peers. In the 2010 cohort, the female retention rate was 82.6%, compared to 81.6% for their male counterparts (see Figure 4).

Figure 4: Trends in Second-Year Retention Rates by Entering Cohort at Maryland Four-Year Public Colleges and Universities by Gender, 1990-2010



- Similar to the overall statewide trend, African American females continued to achieve a higher second-year retention rate than African American males. The retention rate for African American female students in the 2010 cohort was 76.8%, compared 74.3% for male students.

Maryland State-Aided Independent Institutions

The final section of this report examines the six-year graduation rate and second-year retention rate data for Maryland residents who began their academic careers at one of the state’s independent institutions. Most of the state’s independent institutions began providing MHEC with student-level information about the enrollment and degree completion patterns of Maryland residents in fall 2005. The overall graduation and retention rates at the independent state institutions differ from the overall rates for Maryland public institutions, and therefore do not permit direct comparisons between these two institutional types.

Six-Year Graduation Rate

- The six-year graduation rate for the 2005 cohort of first-time, full-time Maryland residents at state-aided independent institutions was 62.8%, a slight decrease from 62.9% for the 2004 cohort. The independent campuses with the highest six-year graduation rate for Maryland residents were Johns Hopkins University (83.4%), Loyola University Maryland (77.7%), McDaniel College (73.7%), and Washington College (73.0%).

- At independent institutions, the six-year graduation rate for African American students in the 2005 cohort was 38.9%. The six-year graduation rate for white students in the 2005 cohort was 69.6%. MHEC does not report graduation rates for other races or ethnicities.
- Consistent with the statewide trend at public institutions, female students at independent institutions had a higher six-year graduation rate than their male peers (64.3% versus 60.3%).

Second-Year Retention Rates

- The 2010 second-year retention rate for students attending Maryland independent institutions decreased by 5.7 percentage points, to 70.5% from 76.2%.
- The second-year retention rate for African American students in the 2010 cohort decreased by 5.3 percentage points (to 61.4% from 66.7%) when compared to the same rate for the 2009 cohort. The retention rate for white students also decreased, to 74.5% from 80.3%.
- Consistent with the statewide trend at public institutions, the second year retention rate for female students was 5 percentage points higher than the rate for their male peers (72.4% compared to 67.4%).

CONCLUSION

The six-year graduation rate for the 2005 cohort of students entering Maryland's public institutions was 63.3%. This represents the second consecutive decrease from the 2003 cohort rate of 64.7% (the highest rate recorded). Over the long term, the graduation rate in Maryland has increased from 55.8% in the 1990 cohort.

Although there have been real gains in educational attainment in the last several years, these gains have been distributed unevenly among all groups. Statewide, the six-year graduation rate has increased by 9.4% over the past twenty years. White and Asian students had the largest increases over this time. Since the 1985 entering cohort, the graduation rate for white students has increased 13.5 percentage points, to 74.1% from 60.6%. Similarly, Asian students have seen an increase in graduation rate to 73.6% from 62.5% (11.1 percentage points). The increase among African American students was also above the statewide average, increasing by 10 percentage points, to 42.2% for the 2005 cohort from 32.2% for the 1985 cohort. Since the 1985 entering cohort, the graduation rate for Hispanic students has increased by 7.1 percentage points, to 61.4% from 54.3%.

For the second year in a row, the report also highlighted slight decreases in the six-year graduation rates for both female and male students. While the graduation rate gender gap has gradually closed over the past decade, women continue to lead in both college enrollments and graduation rates. Among the 2005 entering cohort, 65.3% of females graduated within six years while only 59.9% of males did the same. A 2010 study by the National Center for Education Statistics projected that by 2019 women would still account for 59% of the total undergraduate enrollment.

At 82.1%, the statewide second-year retention rate reached its highest level since 2001. If sustained, the retention rate increases should result in higher graduation rates over the next several years. Maryland's higher education system continues to improve the rate at which students progress through college. However, a significant percentage of students are not achieving at the levels needed for academic success.

**STATEWIDE TRENDS IN RETENTION AND
GRADUATION RATES**

Trends in Retention and Graduation Rates
MARYLAND PUBLIC COLLEGES AND UNIVERSITIES
All Students

Percent enrolled at original campus or graduated from **any** campus after:

Cohort	N	One Year	Two Years	Three Years	Four Years		Five Years		Six Years	
					Enrolled	Graduated	Enrolled	Graduated	Enrolled	Graduated
1990	9,329	79.0	66.8	61.5	33.4	23.6	10.7	47.7	4.6	55.8
1991	9,272	77.8	66.2	61.3	32.6	24.3	9.7	47.7	3.7	55.1
1992	9,441	79.8	67.2	61.9	32.5	25.2	9.5	48.9	3.8	56.2
1993	9,797	78.6	66.3	61.2	31.8	25.2	9.2	48.4	3.7	55.4
1994	10,078	78.9	66.6	61.7	31.2	26.1	8.5	49.6	3.4	56.7
1995	10,717	80.5	68.1	63.6	29.6	29.9	8.8	51.6	3.7	58.4
1996	11,066	80.3	69.7	64.7	30.0	30.4	8.4	53.0	3.5	59.3
1997	11,612	81.8	70.7	66.4	29.3	33.0	8.2	54.8	3.3	61.1
1998	12,154	81.9	70.7	66.7	30.4	32.5	8.1	55.4	3.3	62.1
1999	12,037	81.7	71.8	67.8	29.1	34.2	7.9	56.4	3.1	62.6
2000	12,319	81.5	71.9	68.0	27.8	35.9	7.4	57.9	2.8	64.0
2001	13,454	82.6	72.0	68.2	25.7	37.9	6.3	58.5	2.6	64.2
2002	13,165	81.1	70.9	67.5	25.3	38.3	6.7	58.8	2.7	64.3
2003	13,250	81.3	71.3	67.9	25.0	39.0	6.6	59.2	2.9	64.7
2004	13,610	80.8	70.8	66.6	25.3	38.7	6.9	58.5	3.0	64.1
2005	13,788	79.8	69.4	66.1	22.8	40.2	6.8	58.2	3.2	63.3
2006	14,492	78.5	68.7	65.5	24.8	37.4	7.2	55.8		
2007	14,799	81.0	70.5	67.5	25.0	38.9				
2008	15,100	80.8	70.9	66.8						
2009	14,666	81.5	72.1							
2010	14,112	82.1								

Source: MHEC Enrollment and Degree Information Systems

Trends in Retention and Graduation Rates
MARYLAND PUBLIC COLLEGES AND UNIVERSITIES
 African American Students

Percent enrolled at original campus or graduated from **any** campus after:

Cohort	N	One Year	Two Years	Three Years	Four Years		Five Years		Six Years	
					Enrolled	Graduated	Enrolled	Graduated	Enrolled	Graduated
1990	2,800	73.6	59.1	52.1	34.1	11.5	14.9	29.9	7.1	38.6
1991	2,979	73.2	59.3	53.1	32.9	14.4	12.2	32.7	5.0	40.0
1992	2,958	76.3	59.8	52.4	32.9	14.5	12.3	32.6	5.7	39.7
1993	3,244	75.2	60.0	52.5	33.1	14.9	12.9	33.0	5.5	40.2
1994	3,293	75.0	60.9	53.5	31.9	16.4	11.1	35.1	4.8	43.3
1995	3,523	77.7	61.1	54.2	31.3	17.3	12.4	35.4	5.2	43.1
1996	3,428	75.7	63.0	55.6	32.4	18.2	12.1	37.3	5.5	45.1
1997	3,450	78.0	63.8	56.8	32.9	19.1	12.1	37.7	5.2	45.9
1998	3,572	76.1	61.3	55.4	32.7	17.2	11.6	37.1	5.3	45.6
1999	3,386	77.0	64.8	58.3	32.6	20.5	12.4	40.1	5.3	47.5
2000	3,426	74.9	70.0	54.9	31.1	18.2	11.6	37.4	4.8	45.1
2001	4,092	74.9	60.7	54.3	29.0	20.2	10.2	37.9	4.9	44.7
2002	3,975	73.1	59.7	53.6	29.4	18.7	10.9	36.3	4.7	43.0
2003	4,317	74.1	60.7	53.9	30.2	18.6	10.5	36.4	5.1	43.2
2004	4,272	72.3	58.0	51.2	29.9	17.7	11.9	33.5	5.6	41.1
2005	4,419	72.2	56.9	51.6	27.1	19.7	10.9	36.2	5.5	42.2
2006	5,046	69.7	55.9	50.6	29.3	17.1	10.7	34.6		
2007	4,723	72.8	58.2	53.2	31.5	17.2				
2008	5,163	72.8	58.6	53.2						
2009	4,743	71.8	58.5							
2010	4,555	75.8								

Source: MHEC Enrollment and Degree Information Systems

Trends in Retention and Graduation Rates
MARYLAND PUBLIC COLLEGES AND UNIVERSITIES
 White Students

Percent enrolled at original campus or graduated from **any** campus after:

Cohort	N	One Year	Two Years	Three Years	Four Years		Five Years		Six Years	
					Enrolled	Graduated	Enrolled	Graduated	Enrolled	Graduated
1990	5,521	81.8	70.8	66.1	32.3	30.3	8.0	57.0	3.2	64.5
1991	5,198	80.4	69.8	65.6	31.5	30.7	7.4	57.0	2.7	64.0
1992	5,388	81.4	70.7	66.4	30.6	32.2	6.8	58.7	2.6	65.2
1993	5,369	80.2	69.2	65.5	29.7	32.1	6.6	58.1	2.4	64.6
1994	5,505	80.6	69.6	66.2	29.4	33.8	6.6	58.9	2.5	64.6
1995	5,814	82.0	72.0	69.0	27.9	37.7	6.3	61.3	2.5	67.1
1996	6,236	82.5	72.8	68.9	28.2	37.1	6.0	61.5	2.4	66.6
1997	6,543	83.3	73.8	70.8	26.4	40.6	5.7	63.5	2.0	68.3
1998	6,725	84.5	74.7	72.0	27.8	41.0	5.7	64.6	2.1	70.0
1999	6,823	83.9	75.2	72.4	26.9	41.5	5.6	64.3	2.1	69.6
2000	6,896	84.2	76.6	73.8	25.8	44.2	5.3	67.1	1.9	72.2
2001	7,082	86.9	78.1	75.7	23.6	48.4	4.2	70.0	1.5	74.7
2002	7,095	85.3	77.0	74.8	22.5	48.9	4.4	70.5	1.8	75.2
2003	6,520	85.7	77.5	76.0	21.8	50.6	4.3	71.8	1.5	76.4
2004	6,796	84.7	76.9	74.0	21.9	50.4	3.9	71.4	1.5	75.7
2005	6,846	83.5	75.5	73.6	19.6	52.3	4.1	70.8	1.8	74.1
2006	6,824	83.3	76.1	74.5	21.6	50.2	4.8	69.2		
2007	7,428	85.5	77.6	75.9	20.9	52.3				
2008	7,248	85.2	77.8	74.9						
2009	7,285	86.5	79.2							
2010	6,741	85.6								

Source: MHEC Enrollment and Degree Information Systems

Trends in Retention and Graduation Rates
MARYLAND PUBLIC COLLEGES AND UNIVERSITIES
 Asian Students

Percent enrolled at original campus or graduated from **any** campus after:

Cohort	N	One Year	Two Years	Three Years	Four Years		Five Years		Six Years	
					Enrolled	Graduated	Enrolled	Graduated	Enrolled	Graduated
1990	635	85.0	74.8	70.4	41.9	23.2	15.6	53.0	5.8	65.0
1991	658	84.0	74.9	69.3	41.8	22.6	15.7	48.9	4.9	61.0
1992	713	86.4	76.3	70.9	45.0	22.6	15.7	50.1	4.5	64.1
1993	705	87.7	77.6	72.8	41.7	24.8	12.3	52.6	5.1	63.2
1994	735	87.3	74.3	68.8	43.1	21.5	12.2	51.6	4.9	62.5
1995	725	85.5	76.6	72.7	36.7	31.9	11.7	57.6	5.7	68.1
1996	683	88.0	79.6	76.3	36.9	32.6	11.7	59.8	3.8	70.4
1997	838	88.1	79.5	75.3	37.2	33.4	11.6	59.4	4.9	69.8
1998	944	86.5	79.0	74.2	42.1	30.2	12.5	60.3	4.4	70.8
1999	912	85.1	77.1	71.8	35.4	33.2	10.0	61.5	3.6	70.9
2000	955	86.8	78.4	76.1	35.2	38.5	9.5	66.5	3.8	75.2
2001	977	87.0	79.9	76.7	29.7	42.4	8.1	67.3	2.7	75.8
2002	958	84.1	75.9	72.1	28.2	44.5	7.4	68.1	2.9	75.1
2003	1,035	86.6	77.0	74.6	27.1	45.5	6.4	70.4	3.1	77.0
2004	1,058	86.2	78.4	74.0	28.5	43.8	7.7	68.9	2.6	75.5
2005	1,106	86.3	76.9	73.1	25.4	46.0	8.0	66.5	3.3	73.6
2006	1,173	87.3	77.4	74.8	26.0	47.3	8.1	67.8		
2007	1,162	88.3	77.7	75.1	27.7	45.2				
2008	1,239	89.5	81.4	76.9						
2009	1,214	90.1	83.4							
2010	1,293	89.4								

Source: MHEC Enrollment and Degree Information Systems

Trends in Retention and Graduation Rates
MARYLAND PUBLIC COLLEGES AND UNIVERSITIES
 Hispanic Students

Percent enrolled at original campus or graduated from **any** campus after:

Cohort	N	One Year	Two Years	Three Years	Four Years		Five Years		Six Years	
					Enrolled	Graduated	Enrolled	Graduated	Enrolled	Graduated
1990	199	75.4	59.8	57.8	34.7	18.6	13.6	40.2	3.5	50.7
1991	233	77.3	65.6	60.1	38.2	21.0	14.2	42.5	5.6	51.9
1992	190	77.4	62.1	61.6	35.3	15.3	12.6	37.9	3.2	47.9
1993	205	75.6	64.4	60.5	36.1	17.1	12.2	37.6	5.9	47.8
1994	235	80.0	61.7	57.4	34.9	19.1	11.1	41.7	3.8	54.5
1995	267	80.5	67.0	61.4	36.3	19.4	11.6	43.8	4.9	52.1
1996	290	80.3	72.4	67.9	34.5	25.5	10.0	49.0	4.1	56.5
1997	295	79.3	65.8	63.7	31.5	28.5	8.8	54.9	3.4	61.3
1998	322	83.9	68.9	64.6	32.0	28.9	8.7	54.4	4.0	62.1
1999	339	80.2	68.1	66.1	33.0	27.2	6.5	51.7	1.8	58.7
2000	321	83.8	75.1	71.3	30.8	33.6	8.1	60.1	2.2	67.0
2001	355	84.5	74.0	71.5	32.1	29.9	4.2	60.3	1.4	67.0
2002	355	83.1	74.7	72.3	30.1	38.6	6.8	61.7	2.5	69.0
2003	409	84.4	72.9	69.4	25.9	39.4	6.6	60.6	2.7	66.7
2004	383	83.8	75.5	72.8	28.2	38.9	6.0	61.4	3.9	66.1
2005	456	78.9	78.9	67.3	25.0	37.7	5.9	57.9	1.5	61.4
2006	536	80.8	70.3	68.8	24.8	39.9	6.0	59.0		
2007	511	83.4	74.0	71.6	25.2	40.7				
2008	563	81.0	72.3	68.7						
2009	559	84.8	75.1							
2010	700	83.6								

Source: MHEC Enrollment and Degree Information Systems

Trends in Retention and Graduation Rates
MARYLAND PUBLIC COLLEGES AND UNIVERSITIES
 Male Students

Percent enrolled at original campus or graduated from **any** campus after:

Cohort	N	One Year	Two Years	Three Years	Four Years		Five Years		Six Years	
					Enrolled	Graduated	Enrolled	Graduated	Enrolled	Graduated
1990	4,451	77.3	64.9	59.7	37.0	17.2	12.7	41.7	5.4	50.3
1991	4,370	75.0	62.9	57.9	36.7	16.3	12.0	40.4	4.2	49.2
1992	4,355	78.1	64.7	59.1	35.9	17.5	12.1	40.8	4.6	49.6
1993	4,693	76.1	64.0	58.3	35.3	18.4	11.0	41.8	4.3	49.8
1994	4,666	76.3	64.5	58.8	35.0	18.6	10.1	42.7	4.0	50.9
1995	4,777	78.6	66.2	61.6	34.2	22.3	10.3	45.8	4.6	53.5
1996	5,008	78.8	67.4	62.4	34.8	22.8	10.6	46.7	4.3	54.3
1997	5,360	80.4	69.2	64.1	33.7	25.5	10.0	48.1	4.0	55.4
1998	5,488	80.6	69.5	64.8	33.7	26.4	9.5	49.8	4.0	57.3
1999	5,612	80.5	70.3	65.6	32.5	27.4	9.4	50.8	3.6	58.2
2000	5,648	80.5	70.9	66.4	32.4	28.7	8.9	52.5	3.5	59.7
2001	6,044	82.0	71.5	66.9	29.7	31.2	7.5	54.0	3.1	60.8
2002	5,864	80.6	70.6	66.5	29.4	32.2	8.3	54.2	3.5	60.8
2003	5,899	81.0	70.5	66.7	28.9	32.7	7.8	55.4	3.4	61.6
2004	6,205	79.5	70.0	65.5	28.8	32.7	8.1	54.5	3.5	61.1
2005	6,198	79	68.4	64.9	25.8	34.9	8.0	54.3	3.8	59.9
2006	6,486	78.4	68.5	65.0	28.1	32.5	8.9	52.1		
2007	6,668	81.2	70.3	67.0	28.7	33.4				
2008	6,880	79.9	70.5	65.8						
2009	6,707	80.4	70.9							
2010	6,457	81.6								

Source: MHEC Enrollment and Degree Information Systems

Trends in Retention and Graduation Rates
MARYLAND PUBLIC COLLEGES AND UNIVERSITIES
 Female Students

Percent enrolled at original campus or graduated from **any** campus after:

Cohort	N	One Year	Two Years	Three Years	Four Years		Five Years		Six Years	
					Enrolled	Graduated	Enrolled	Graduated	Enrolled	Graduated
1990	4,878	80.6	68.6	63.2	30.1	29.5	8.8	53.2	3.8	61.0
1991	4,902	80.3	69.1	64.3	29.0	31.5	7.7	54.3	3.1	60.4
1992	5,086	81.3	69.3	64.4	29.5	31.9	7.2	55.9	3.1	62.0
1993	5,104	81.0	68.4	63.8	28.7	31.4	7.6	54.5	3.1	60.8
1994	5,412	81.1	68.5	64.1	27.9	33.3	7.2	55.6	3.0	61.8
1995	5,940	81.9	69.5	65.2	25.9	36.0	7.5	56.4	3.0	62.4
1996	6,058	81.5	71.5	66.6	26.0	36.6	6.5	58.1	2.8	63.4
1997	6,252	83.1	72.0	68.5	25.5	39.5	6.6	60.6	2.6	66.1
1998	6,666	82.9	71.7	68.3	27.8	37.4	7.0	59.8	2.8	66.1
1999	6,425	82.8	73.2	69.7	26.1	40.2	6.5	61.3	2.7	66.5
2000	6,671	82.5	72.7	69.2	23.9	41.9	6.1	62.5	2.3	67.7
2001	7,410	83.0	72.4	69.1	22.4	43.4	5.4	62.3	2.2	67.0
2002	7,301	81.4	71.1	68.2	22.0	43.3	5.4	62.5	2.2	67.1
2003	7,346	81.6	71.9	68.8	21.9	44.0	5.5	62.2	2.5	67.1
2004	7,396	81.8	71.5	67.6	22.3	43.8	5.9	61.8	2.7	66.6
2005	7,563	80.4	70.3	67.1	20.4	44.6	5.8	61.5	2.7	65.3
2006	8,006	78.6	68.8	66.0	22.2	41.3	5.9	58.9		
2007	8,128	80.8	70.7	67.9	22.1	43.4				
2008	8,217	81.6	71.3	67.7						
2009	7,958	82.4	73.2							
2010	7,655	82.6								

Source: MHEC Enrollment and Degree Information Systems

Trends in Retention and Graduation Rates
MARYLAND PUBLIC COLLEGES AND UNIVERSITIES
 African American Male Students

Percent enrolled at original campus or graduated from **any** campus after:

Cohort	N	One Year	Two Years	Three Years	Four Years		Five Years		Six Years	
					Enrolled	Graduated	Enrolled	Graduated	Enrolled	Graduated
1990	1,185	70.5	56.6	48.9	35.1	6.5	16.9	22.8	8.1	30.1
1991	1,203	68.7	53.4	47.1	32.6	8.1	13.1	24.7	4.6	32.0
1992	1,273	73.4	55.3	47.3	32.6	7.8	14.5	21.9	6.7	29.5
1993	1,351	71.0	56.1	47.6	34.4	7.8	14.5	23.7	6.3	31.6
1994	1,317	69.2	55.4	46.5	32.6	8.7	11.8	25.0	4.9	33.6
1995	1,327	74.6	58.3	51.3	34.4	9.8	13.9	26.6	6.1	34.5
1996	1,293	72.5	59.7	51.3	35.3	10.4	14.5	28.5	6.3	37.3
1997	1,407	76.1	62.0	53.8	37.5	10.8	15.1	27.9	6.8	36.4
1998	1,339	74.2	58.5	51.1	34.7	10.9	13.6	28.6	6.9	37.1
1999	1,375	74.9	61.3	52.9	36.7	11.8	15.1	31.6	5.9	40.2
2000	1,317	73.3	59.3	52.6	34.9	11.2	13.9	29.9	5.2	38.7
2001	1,562	73.9	58.5	50.5	31.9	12.9	11.8	30.0	5.6	37.5
2002	1,512	72.8	57.9	50.7	34.1	11.2	13.4	28.7	6.3	36.2
2003	1,644	73.4	58.6	50.7	33.0	12.4	11.9	30.7	5.4	38.1
2004	1,666	70.9	57.9	50.2	35.7	10.8	14.8	27.3	6.7	36.4
2005	1,652	69.9	54.8	48.7	29.7	12.9	13.0	28.8	7.1	35.9
2006	1,890	69.2	55.0	48.5	32.3	11.7	13.6	28.6		
2007	1,831	71.5	55.4	49.6	33.5	11.2				
2008	2,026	71.1	55.9	50.0						
2009	1,890	69.3	56.1							
2010	1,858	74.3								

Source: MHEC Enrollment and Degree Information Systems

Trends in Retention and Graduation Rates
MARYLAND PUBLIC COLLEGES AND UNIVERSITIES
 African American Female Students

Percent enrolled at original campus or graduated from **any** campus after:

Cohort	N	One Year	Two Years	Three Years	Four Years		Five Years		Six Years	
					Enrolled	Graduated	Enrolled	Graduated	Enrolled	Graduated
1990	1,615	75.9	61.0	54.3	33.4	15.2	13.4	35.2	6.4	44.8
1991	1,776	76.2	63.4	57.3	33.2	18.7	11.7	38.1	5.3	45.4
1992	1,685	78.5	63.2	56.9	33.1	19.6	10.6	40.6	5.0	47.3
1993	1,893	78.2	62.8	56.0	32.2	20.0	11.7	39.7	4.9	46.3
1994	1,976	78.8	64.5	58.1	31.5	21.5	10.5	41.7	4.7	49.7
1995	2,196	79.5	62.7	56.0	29.4	22.0	11.5	40.8	4.7	48.3
1996	2,135	77.7	64.9	58.2	30.6	22.9	10.6	42.7	5.0	49.9
1997	2,043	79.3	65.2	58.7	29.8	24.9	9.9	44.6	4.1	52.3
1998	2,233	77.2	63.0	57.9	31.5	21.1	10.5	42.2	4.4	50.9
1999	2,011	78.4	67.2	62.0	29.8	26.5	10.6	46.0	5.0	52.5
2000	2,109	75.9	62.0	56.0	28.8	22.7	10.2	42.0	4.6	49.2
2001	2,530	75.5	62.1	56.9	27.2	24.6	9.1	42.7	4.5	49.1
2002	2,463	73.3	60.7	55.3	26.6	23.3	9.3	40.9	3.8	47.1
2003	2,671	74.6	62.1	55.9	28.5	22.4	9.6	39.9	4.9	46.4
2004	2,604	73.2	57.6	51.8	26.3	22.2	10.1	37.4	5.0	44.1
2005	2,762	73.5	58.1	53.4	25.6	23.8	9.6	40.6	4.5	46.0
2006	3,156	70.0	56.4	51.8	27.4	20.2	9.2	38.2		
2007	2,892	73.7	60.0	55.4	30.3	21.0				
2008	3,134	73.9	60.4	55.6						
2009	2,853	73.5	60.6							
2010	2,697	76.8								

Source: MHEC Enrollment and Degree Information Systems

Trends in Retention and Graduation Rates
MARYLAND PUBLIC COLLEGES AND UNIVERSITIES
 Hispanic Male Students

Percent enrolled at original campus or graduated from **any** campus after:

Cohort	N	One Year	Two Years	Three Years	Four Years		Five Years		Six Years	
					Enrolled	Graduated	Enrolled	Graduated	Enrolled	Graduated
1990	104	71.2	51.9	51.9	28.8	14.4	12.5	30.8	1.9	41.3
1991	114	74.6	61.4	58.8	43.9	11.4	16.7	35.1	7.0	45.6
1992	91	76.9	60.4	58.2	31.9	12.1	13.2	33.0	2.2	40.7
1993	94	72.3	59.6	55.3	43.6	9.6	18.1	29.8	9.6	44.7
1994	104	78.8	58.7	56.7	46.2	5.8	15.4	32.7	4.8	46.2
1995	106	80.2	67.0	61.3	42.5	13.2	24.6	7.2	6.6	50.0
1996	141	81.56	73.0	68.1	39.0	22.0	10.6	41.8	5.0	49.6
1997	126	78.6	62.7	61.9	32.5	22.2	7.9	46.8	3.2	55.6
1998	139	79.1	62.6	56.8	30.2	23.7	10.1	46.8	4.3	54.7
1999	178	77.5	65.7	61.8	33.7	20.8	6.7	43.3	2.8	52.2
2000	140	80.0	69.3	63.6	32.9	24.3	7.9	53.6	2.1	60.7
2001	164	82.9	73.8	70.7	41.5	17.7	6.1	55.5	1.8	64.6
2002	168	79.2	73.2	69.0	33.9	29.8	7.7	54.2	4.8	63.7
2003	185	84.3	69.2	64.3	28.6	28.1	5.4	56.2	2.2	61.1
2004	176	77.8	69.3	65.9	32.4	27.3	8.0	51.7	5.1	57.4
2005	203	77.8	71.9	68.0	27.6	35.0	6.4	57.1	1.8	61.1
2006	228	78.5	68.0	65.4	29.4	31.1	7.5	52.2		
2007	241	82.2	71.8	70.5	28.2	35.7				
2008	249	76.7	68.3	64.7						
2009	263	84.0	73.0							
2010	284	82.7								

Source: MHEC Enrollment and Degree Information Systems

Trends in Retention and Graduation Rates
MARYLAND PUBLIC COLLEGES AND UNIVERSITIES
 Hispanic Female Students

Percent enrolled at original campus or graduated from **any** campus after:

Cohort	N	One Year	Two Years	Three Years	Four Years		Five Years		Six Years	
					Enrolled	Graduated	Enrolled	Graduated	Enrolled	Graduated
1990	95	80.0	68.4	64.2	41.1	23.2	14.7	50.5	5.3	61.1
1991	119	79.8	69.7	61.3	32.8	30.3	11.8	49.6	4.2	58.0
1992	99	77.8	63.6	64.6	38.4	18.2	12.1	42.4	4.0	54.5
1993	111	78.4	68.5	64.9	29.7	23.4	7.2	44.1	2.7	50.5
1994	131	80.9	64.1	58.0	26.0	29.8	7.6	48.9	3.1	61.1
1995	161	80.7	67.1	61.5	32.3	23.6	8.7	46.6	3.7	53.4
1996	149	79.2	71.8	67.8	30.2	28.9	9.4	55.7	3.4	63.1
1997	169	79.9	68.0	65.1	30.8	33.1	9.5	60.9	3.6	65.7
1998	183	87.4	73.8	70.5	33.3	32.8	7.7	60.1	3.8	67.8
1999	161	83.2	70.8	70.8	32.3	34.2	6.2	60.9	0.6	65.8
2000	181	86.7	79.6	77.3	29.3	40.9	8.3	65.2	2.2	71.8
2001	191	85.9	74.3	72.3	24.1	40.3	2.6	64.4	1.0	69.1
2002	187	86.6	75.9	75.4	26.7	46.5	5.9	68.4	0.5	73.8
2003	224	84.4	75.9	73.7	23.7	48.7	7.6	64.3	3.1	71.4
2004	207	88.9	80.7	78.7	24.6	48.8	4.3	69.6	2.9	73.4
2005	253	79.8	69.6	66.8	22.9	39.9	5.5	58.5	1.2	61.7
2006	308	82.5	72.1	71.4	21.4	46.4	5.5	64.0		
2007	269	84.8	76.2	72.9	23.0	45.7				
2008	314	84.4	75.5	72.6						
2009	296	85.5	77.7							
2010	416	84.1								

Source: MHEC Enrollment and Degree Information Systems

**INSTITUTIONAL TRENDS IN RETENTION AND
GRADUATION RATES
-ALL STUDENTS-**

Trends in Retention and Graduation Rates
BOWIE STATE UNIVERSITY
All Students

Percent enrolled at original campus or graduated from **any** campus after:

Cohort	N	One Year	Two Years	Three Years	Four Years		Five Years		Six Years	
					Enrolled	Graduated	Enrolled	Graduated	Enrolled	Graduated
1990	417	67.9	55.4	45.3	32.1	7.6	15.1	26.9	7.0	35.9
1991	383	74.9	61.1	53.8	37.6	11.7	15.4	31.0	6.3	38.9
1992	405	73.3	58.8	51.6	36.8	9.6	15.6	27.7	7.9	38.1
1993	361	65.4	54.6	46.3	35.2	10.8	13.0	26.8	6.9	34.4
1994	369	74.3	61.5	55.8	36.3	13.6	16.3	33.3	8.7	42.3
1995	463	73.7	58.5	51.8	35.9	14.3	15.8	32.9	7.1	40.6
1996	305	70.8	60.3	55.4	36.1	14.4	14.4	33.4	7.5	39.4
1997	360	70.8	61.7	52.2	37.8	12.8	14.4	30.8	7.5	39.4
1998	419	73.3	55.4	51.5	35.1	13.4	16.7	31.7	8.8	41.1
1999	343	71.1	59.5	50.7	36.2	14.6	18.1	32.9	6.4	40.8
2000	363	73.0	62.0	52.9	36.9	12.7	17.4	30.6	7.4	39.4
2001	599	74.9	58.4	53.3	33.1	15.4	14.9	31.8	7.2	40.2
2002	576	69.8	60.6	55.7	31.6	19.2	10.6	38.2	6.1	45.0
2003	766	72.7	60.2	51.8	34.6	14.0	12.4	34.7	4.3	43.2
2004	627	76.9	60.3	53.0	34.8	15.3	16.6	32.1	8.6	41.0
2005	923	71.7	58.9	54.1	29.4	22.9	13.9	37.6	8.0	43.8
2006	765	70.3	53.9	49.2	35.4	11.5	16.0	29.0		
2007	820	69.5	56.7	47.8	32.4	13.8				
2008	773	70.8	55.2	49.4						
2009	706	70.4	57.6							
2010	671	73.5								

Source: MHEC Enrollment and Degree Information Systems

Trends in Retention and Graduation Rates
COPPIN STATE UNIVERSITY
 All Students

Percent enrolled at original campus or graduated from **any** campus after:

Cohort	N	One Year	Two Years	Three Years	Four Years		Five Years		Six Years	
					Enrolled	Graduated	Enrolled	Graduated	Enrolled	Graduated
1990	330	64.5	50.0	42.1	34.2	3.9	16.1	16.4	9.4	22.1
1991	311	66.9	54.0	48.5	31.2	9.6	14.8	19.6	8.4	27.0
1992	349	72.8	48.7	39.3	28.4	4.9	14.9	15.2	10.0	21.2
1993	500	64.6	40.6	33.8	25.2	5.2	13.6	13.4	7.2	18.8
1994	384	65.1	48.4	42.2	31.8	6.0	15.9	15.9	9.6	25.3
1995	439	72.2	54.9	47.4	33.3	7.1	20.3	18.3	9.1	26.4
1996	514	69.6	54.1	46.5	35.8	6.2	19.5	18.7	9.1	29.3
1997	383	72.1	53.3	45.7	36.0	4.4	19.1	17.0	10.4	23.5
1998	457	72.2	53.4	45.1	32.4	7.2	17.3	19.5	9.0	26.5
1999	441	68.9	49.7	39.9	24.7	9.3	12.9	19.2	7.5	24.7
2000	417	71.2	50.1	40.0	27.6	5.2	15.3	13.9	7.2	20.7
2001	540	69.6	45.9	38.2	23.7	7.6	13.1	17.0	6.3	22.0
2002	579	68.9	48.5	37.5	26.1	5.7	12.4	15.0	6.6	18.3
2003	571	65.3	49.3	37.0	25.7	5.1	12.1	12.6	8.6	17.5
2004	601	63.1	44.4	35.4	26.5	5.2	15.0	11.6	8.7	18.3
2005	689	63.4	39.6	32.5	21.8	4.2	11.0	13.6	6.8	18.0
2006	508	59.8	43.3	35.8	24.8	5.5	14.8	14.2		
2007	570	58.4	37.5	32.3	24.2	4.6				
2008	605	61.8	42.6	35.9						
2009	566	60.4	43.8							
2010	525	63.6								

Source: MHEC Enrollment and Degree Information Systems

Trends in Retention and Graduation Rates
FROSTBURG STATE UNIVERSITY
All Students

Percent enrolled at original campus or graduated from **any** campus after:

Cohort	N	One Year	Two Years	Three Years	Four Years		Five Years		Six Years	
					Enrolled	Graduated	Enrolled	Graduated	Enrolled	Graduated
1990	844	78.1	64.9	60.8	32.8	26.4	5.8	56.6	1.5	63.2
1991	763	73.7	63.3	59.1	29.4	25.8	6.6	51.8	1.2	60.2
1992	840	76.0	62.3	56.8	26.5	28.2	3.3	56.7	1.3	63.1
1993	910	70.8	59.3	54.9	28.9	22.3	6.4	49.0	1.4	56.6
1994	811	70.5	60.7	55.5	30.7	24.0	5.8	53.5	2.2	59.8
1995	913	71.0	57.2	52.0	27.5	23.2	6.0	50.7	1.6	58.9
1996	978	70.7	57.2	52.9	30.1	22.0	5.8	50.7	1.7	56.4
1997	869	72.5	60.0	57.7	28.0	26.5	5.6	53.1	2.3	58.3
1998	937	72.5	59.1	55.0	31.1	21.0	6.1	48.5	1.8	57.1
1999	939	73.8	60.4	55.2	31.7	19.7	6.7	46.9	1.1	55.7
2000	1,031	69.8	58.3	55.0	29.7	21.4	5.6	48.0	1.8	55.0
2001	927	75.7	62.4	57.4	28.9	23.1	3.9	51.8	0.8	58.9
2002	1,001	70.2	58.9	53.9	25.8	24.3	6.0	49.7	1.9	57.2
2003	990	73.7	61.1	56.9	29.1	24.2	6.0	53.6	1.7	60.4
2004	959	70.5	58.7	54.6	29.8	24.0	6.6	49.8	2.3	56.3
2005	929	71.7	56.8	54.4	29.9	21.3	7.1	46.2	1.9	53.0
2006	1,013	67.4	56.4	52.6	28.8	19.5	6.0	44.8		
2007	1,059	74.3	60.1	55.0	27.1	23.6				
2008	1,030	71.9	58.8	54.5						
2009	1,031	73.8	61.7							
2010	1,028	70.8								

Source: MHEC Enrollment and Degree Information Systems

Trends in Retention and Graduation Rates
MORGAN STATE UNIVERSITY
All Students

Percent enrolled at original campus or graduated from **any** campus after:

Cohort	N	One Year	Two Years	Three Years	Four Years		Five Years		Six Years	
					Enrolled	Graduated	Enrolled	Graduated	Enrolled	Graduated
1990	796	69.5	54.9	49.7	31.7	9.8	17.2	25.8	10.4	32.5
1991	1,054	69.7	56.5	50.6	32.0	14.4	13.9	30.1	6.0	36.5
1992	1,135	75.4	58.0	53.0	33.0	16.1	13.7	32.6	5.6	39.2
1993	1,103	75.5	62.4	55.0	34.4	15.0	14.5	34.2	6.4	40.3
1994	996	76.8	62.0	52.1	31.7	15.9	11.6	32.5	5.0	40.0
1995	1,075	74.0	57.3	51.9	28.7	17.7	11.7	32.5	5.5	39.2
1996	1,018	71.2	59.2	52.7	29.2	17.4	13.0	33.6	6.6	40.0
1997	1,150	75.0	60.3	53.3	31.9	16.7	13.1	32.7	5.7	40.9
1998	1,173	73.2	58.3	52.8	31.9	14.5	11.4	33.1	6.3	41.2
1999	1,163	74.4	63.4	56.1	32.5	18.1	13.8	36.3	7.0	43.8
2000	1,114	73.3	57.6	51.9	29.0	18.8	12.6	34.3	6.0	42.3
2001	1,131	69.9	57.9	51.7	31.7	15.5	12.6	32.1	6.4	39.3
2002	1,251	68.1	55.1	49.9	33.4	11.6	15.0	26.9	6.4	34.1
2003	1,225	70.4	56.5	49.5	32.9	11.5	15.2	26.9	7.7	34.8
2004	1,337	68.5	53.0	46.8	32.4	11.8	13.8	26.0	6.8	33.8
2005	765	66.9	53.1	47.1	28.0	12.2	15.4	24.2	7.8	30.7
2006	1,368	61.0	48.5	42.3	26.4	12.4	11.9	25.1		
2007	1,299	67.7	53.2	48.8	33.4	11.3				
2008	1,431	68.3	53.9	47.9						
2009	1,263	67.5	53.0							
2010	1,234	72.3								

Source: MHEC Enrollment and Degree Information Systems

Trends in Retention and Graduation Rates
SALISBURY UNIVERSITY
 All Students

Percent enrolled at original campus or graduated from **any** campus after:

Cohort	N	One Year	Two Years	Three Years	Four Years		Five Years		Six Years	
					Enrolled	Graduated	Enrolled	Graduated	Enrolled	Graduated
1990	658	78.4	67.2	63.0	20.1	43.3	5.3	60.8	2.1	65.1
1991	711	79.2	68.4	64.7	20.7	42.7	4.5	60.4	1.4	65.2
1992	634	82.6	71.3	65.9	21.5	43.2	5.2	63.7	2.1	68.6
1993	726	78.4	66.3	63.5	20.4	42.4	4.5	61.0	1.4	65.6
1994	680	78.4	67.9	66.1	17.8	50.2	3.2	66.5	0.7	70.6
1995	642	83.2	75.0	72.4	18.5	53.0	3.1	70.2	1.6	73.9
1996	734	83.5	73.7	68.3	21.9	45.6	4.9	67.0	1.8	70.8
1997	888	82.0	72.9	70.8	21.4	48.8	3.5	69.8	1.7	73.1
1998	935	81.0	73.1	70.5	21.1	48.1	2.5	68.9	0.6	72.8
1999	878	82.2	75.7	72.3	17.5	53.4	2.7	70.5	1.0	73.0
2000	940	82.8	75.7	72.7	19.1	54.3	3.9	71.6	0.9	75.1
2001	945	81.4	73.2	71.9	22.1	47.4	3.2	70.1	0.7	74.5
2002	908	80.1	73.4	71.8	22.9	47.8	4.4	69.4	1.0	74.9
2003	948	81.1	71.8	70.9	20.3	48.1	4.4	67.8	1.6	72.3
2004	983	83.6	74.8	71.7	22.2	49.1	2.8	71.7	0.5	76.6
2005	956	81.3	72.8	70.9	19.2	48.6	3.5	66.8	1.2	71.6
2006	1,028	80.6	73.8	71.5	19.1	51.1	4.4	68.9		
2007	1,144	82.7	73.0	69.9	20.5	49.0				
2008	1,201	79.9	72.7	68.9						
2009	1,279	80.5	72.9							
2010	1,253	82.0								

Source: MHEC Enrollment and Degree Information Systems

Trends in Retention and Graduation Rates
ST. MARY'S COLLEGE OF MARYLAND
All Students

Percent enrolled at original campus or graduated from **any** campus after:

Cohort	N	One Year	Two Years	Three Years	Four Years		Five Years		Six Years	
					Enrolled	Graduated	Enrolled	Graduated	Enrolled	Graduated
1990	209	90.4	78.0	78.0	15.3	63.1	1.9	76.6	0.0	81.4
1991	227	88.1	79.7	75.2	10.1	66.1	0.9	79.7	0.9	81.1
1992	234	88.0	75.2	75.6	16.2	56.0	1.7	75.6	0.0	77.3
1993	285	87.0	72.3	72.6	10.5	59.3	0.4	75.1	0.4	76.5
1994	304	84.2	67.1	66.7	8.9	58.9	1.6	70.4	0.0	73.1
1995	352	86.9	79.0	76.4	14.8	60.8	2.0	76.1	1.4	77.6
1996	324	89.5	83.0	81.7	8.6	70.4	0.9	83.6	0.6	84.0
1997	352	85.8	78.7	76.5	8.5	70.4	1.1	80.4	0.0	81.6
1998	333	85.0	77.5	77.8	11.7	64.9	1.5	76.0	0.6	79.9
1999	282	80.1	74.1	72.0	8.5	64.2	1.4	73.4	1.4	74.9
2000	376	86.7	83.0	82.7	9.3	71.8	1.1	82.5	0.0	84.1
2001	463	90.4	84.2	83.4	6.5	76.7	1.3	83.5	0.2	85.5
2002	425	85.2	78.1	76.2	6.6	69.5	0.5	78.4	0.2	80.9
2003	421	89.3	84.6	81.0	7.6	74.8	2.1	83.4	0.5	85.5
2004	431	88.6	81.2	78.0	6.3	72.2	0.9	80.5	0.2	82.1
2005	488	86.7	82.0	81.6	10.0	71.1	1.6	79.9	0.2	82.4
2006	428	90.9	83.4	81.8	6.5	74.3	0.7	78.0		
2007	464	89.2	82.1	80.4	6.0	71.3				
2008	456	90.8	85.1	81.6						
2009	488	87.3	81.2							
2010	442	87.3								

Source: MHEC Enrollment and Degree Information Systems

Trends in Retention and Graduation Rates
TOWSON UNIVERSITY
 All Students

Percent enrolled at original campus or graduated from **any** campus after:

Cohort	N	One Year	Two Years	Three Years	Four Years		Five Years		Six Years	
					Enrolled	Graduated	Enrolled	Graduated	Enrolled	Graduated
1990	1,424	82.9	74.6	70.4	40.9	25.5	9.8	56.0	4.1	64.8
1991	1,237	80.4	71.0	66.2	36.1	25.5	10.3	52.5	4.2	60.6
1992	1,334	81.9	72.3	67.7	34.9	28.2	9.4	56.4	3.7	63.2
1993	1,214	79.9	70.9	66.6	36.2	27.3	8.5	55.6	3.3	62.2
1994	1,335	81.1	70.2	65.8	36.5	26.2	10.3	52.5	3.9	59.1
1995	1,488	81.3	73.5	70.1	33.9	32.4	7.4	58.7	2.7	64.5
1996	1,857	80.3	71.2	67.7	34.0	28.6	7.6	54.6	3.7	60.3
1997	1,812	81.7	72.2	68.0	30.7	31.4	9.8	54.2	4.1	59.8
1998	1,931	82.8	74.1	69.8	35.3	31.0	9.0	57.7	3.5	63.9
1999	2,115	81.0	72.3	69.0	33.4	30.7	9.8	54.0	3.6	60.7
2000	1,987	82.1	75.4	70.6	33.8	31.9	8.4	57.9	2.6	64.9
2001	1,912	86.4	76.0	73.0	33.4	35.5	6.9	62.1	2.8	68.1
2002	2,203	83.8	74.9	72.1	30.7	38.3	6.9	64.7	2.6	70.4
2003	1,757	84.4	79.5	76.9	29.0	44.5	5.2	69.8	1.9	75.1
2004	2,085	82.2	76.0	72.7	31.4	39.5	7.1	65.6	2.6	72.6
2005	2,322	79.2	72.6	69.1	28.5	39.6	7.7	62.9	3.7	68.3
2006	2,692	80.9	74.4	70.8	29.8	38.8	7.5	63.1		
2007	2,657	80.8	73.1	70.6	29.0	39.9				
2008	2,829	83.0	76.4	73.2						
2009	2,398	84.7	78.2							
2010	2,428	83.6								

Source: MHEC Enrollment and Degree Information Systems

Trends in Retention and Graduation Rates
UNIVERSITY OF BALTIMORE
 All Students

Percent enrolled at original campus or graduated from **any** campus after:

Cohort	N	One Year	Two Years	Three Years	Four Years		Five Years		Six Years	
					Enrolled	Graduated	Enrolled	Graduated	Enrolled	Graduated
2007	143	67.8	54.5	49.0	21.7	18.9				
2008	163	81.6	63.2	56.4						
2009	174	83.4	53.5							
2010	163	77.3								

Source: MHEC Enrollment and Degree Information Systems

Trends in Retention and Graduation Rates
UNIVERSITY OF MARYLAND BALTIMORE COUNTY
 All Students

Percent enrolled at original campus or graduated from **any** campus after:

Cohort	N	One Year	Two Years	Three Years	Four Years		Five Years		Six Years	
					Enrolled	Graduated	Enrolled	Graduated	Enrolled	Graduated
1990	1,042	81.1	66.6	57.4	35.5	19.0	12.5	47.2	4.9	58.0
1991	908	80.9	65.7	56.7	33.4	21.2	11.5	44.1	4.8	54.2
1992	878	83.0	69.1	60.8	35.0	22.8	9.8	48.7	3.9	57.4
1993	922	81.5	68.7	60.6	33.3	23.1	10.5	49.0	3.5	60.1
1994	756	82.1	66.3	59.9	32.8	24.2	9.1	50.1	4.1	58.7
1995	955	82.0	68.2	63.3	29.2	30.0	8.8	52.2	4.5	59.5
1996	1,005	82.9	70.2	64.0	30.7	27.7	8.9	50.9	4.3	58.4
1997	1,139	84.2	71.2	64.6	31.0	30.8	8.3	53.0	3.4	61.1
1998	1,247	83.3	69.3	63.1	32.6	27.9	9.9	52.0	4.3	61.8
1999	1,400	81.5	69.5	64.8	31.4	29.0	9.1	54.5	3.4	63.3
2000	1,307	82.4	69.1	65.1	32.0	30.3	9.6	55.1	3.7	63.7
2001	1,333	82.5	72.0	67.4	29.1	34.4	8.0	57.1	3.8	65.0
2002	1,357	82.2	71.3	65.8	31.8	32.3	9.5	57.1	4.2	66.3
2003	1,489	82.1	71.0	67.4	29.8	35.2	8.8	59.4	3.7	67.9
2004	1,403	81.6	69.7	65.1	27.9	35.2	7.8	60.4	3.5	67.1
2005	1,415	82.5	68.7	64.5	28.8	34.5	9.2	58.0	4.7	64.7
2006	1,420	84.4	72.4	69.2	29.6	37.7	9.1	59.3		
2007	1,425	86.8	75.7	71.8	32.0	35.2				
2008	1,557	85.2	72.1	68.2						
2009	1,524	83.4	73.2							
2010	1,499	82.8								

Source: MHEC Enrollment and Degree Information Systems

Trends in Retention and Graduation Rates
UNIVERSITY OF MARYLAND, COLLEGE PARK
All Students

Percent enrolled at original campus or graduated from **any** campus after:

Cohort	N	One Year	Two Years	Three Years	Four Years		Five Years		Six Years	
					Enrolled	Graduated	Enrolled	Graduated	Enrolled	Graduated
1990	3,082	84.0	72.9	68.7	35.9	26.3	11.6	52.6	4.4	61.7
1991	3,091	81.5	71.7	68.6	38.6	25.6	9.9	54.9	3.3	62.8
1992	3,101	83.4	74.1	71.0	38.2	27.7	10.4	55.0	3.4	63.6
1993	3,235	84.9	74.4	70.9	36.8	28.1	9.7	55.1	3.9	63.0
1994	3,687	84.5	74.2	69.9	35.1	28.4	8.4	55.4	3.0	63.3
1995	3,643	86.2	75.0	71.8	32.8	32.8	9.2	57.2	3.7	64.8
1996	3,572	87.0	78.4	75.1	32.3	37.0	8.1	62.0	2.7	68.9
1997	3,972	87.9	78.9	76.2	31.5	39.0	7.2	64.2	2.2	70.8
1998	4,067	89.6	80.7	78.2	31.5	41.7	7.3	66.8	2.4	72.9
1999	3,906	90.1	82.6	80.4	29.3	45.4	5.3	70.6	2.1	75.9
2000	3,954	90.8	83.9	81.8	26.9	49.1	4.8	74.5	1.8	79.4
2001	4,358	91.6	84.4	82.0	22.9	54.0	3.9	75.2	1.2	79.8
2002	3,900	92.5	85.3	84.3	20.4	58.7	3.2	78.5	1.2	82.1
2003	4,057	92.1	84.8	84.5	20.5	58.6	3.1	78.9	1.2	82.7
2004	4,179	92.4	86.0	83.8	20.7	58.9	3.3	78.9	1.3	82.6
2005	4,199	91.6	85.3	83.6	17.1	62.2	2.7	79.5	1.1	82.3
2006	3,945	92.4	85.8	84.9	20.5	59.5	4.0	78.1		
2007	4,225	93.7	86.9	86.3	19.5	61.9				
2008	3,902	93.0	88.3	85.4						
2009	4,211	94.8	89.2							
2010	3,925	94.2								

Source: MHEC Enrollment and Degree Information Systems

Trends in Retention and Graduation Rates
UNIVERSITY OF MARYLAND EASTERN SHORE
All Students

Percent enrolled at original campus or graduated from **any** campus after:

Cohort	N	One Year	Two Years	Three Years	Four Years		Five Years		Six Years	
					Enrolled	Graduated	Enrolled	Graduated	Enrolled	Graduated
1990	494	67.6	49.2	41.7	22.7	14.0	5.5	26.5	1.4	33.2
1991	569	70.8	51.7	44.1	19.7	14.3	4.7	30.2	1.2	35.3
1992	499	68.1	50.5	37.5	16.6	14.2	4.4	28.8	2.0	34.5
1993	523	72.3	50.7	42.9	20.5	19.2	3.8	35.0	0.8	40.7
1994	739	64.0	47.4	42.2	19.5	19.1	4.2	35.5	1.5	41.0
1995	714	74.4	56.3	46.2	20.6	23.3	5.5	41.5	2.2	47.3
1996	728	75.0	60.3	47.6	20.6	26.1	4.4	43.4	1.1	49.7
1997	647	76.8	57.8	51.8	20.4	28.5	4.5	45.7	1.1	52.6
1998	622	69.9	55.9	49.0	21.2	26.8	4.0	43.9	1.4	49.5
1999	533	74.1	56.8	52.4	22.1	26.4	6.2	44.3	1.3	49.6
2000	780	66.3	53.9	47.5	22.2	20.0	7.7	34.8	2.8	40.9
2001	1,194	71.4	58.4	48.6	19.8	23.7	5.4	39.3	2.3	45.1
2002	918	69.7	51.2	45.6	19.6	23.6	5.1	40.3	1.7	45.6
2003	951	66.9	47.7	42.1	20.1	19.5	5.8	34.3	2.7	38.7
2004	926	64.3	49.4	42.1	19.3	19.7	7.7	31.4	2.8	37.3
2005	983	64.8	45.8	40.2	20.7	16.5	7.3	30.6	3.1	36.0
2006	1,128	64.6	46.4	42.4	24.5	14.2	8.2	30.0		
2007	875	65.9	48.1	44.2	27.1	14.3				
2008	1,038	68.6	51.3	46.7						
2009	876	64.4	51.0							
2010	944	67.8								

Source: MHEC Enrollment and Degree Information Systems

**INSTITUTIONAL TRENDS IN RETENTION AND
GRADUATION RATES
-BY RACIAL AND ETHNIC BACKGROUND-**

Trends in Retention and Graduation Rates
BOWIE STATE UNIVERSITY
African American Students

Percent enrolled at original campus or graduated from **any** campus after:

Cohort	N	One Year	Two Years	Three Years	Four Years		Five Years		Six Years	
					Enrolled	Graduated	Enrolled	Graduated	Enrolled	Graduated
1990	383	69.2	56.9	47.0	34.2	8.1	15.9	28.4	7.3	37.9
1991	348	75.9	61.8	55.2	38.5	11.8	16.1	31.1	6.6	38.7
1992	375	74.9	60.8	53.3	39.2	8.8	16.3	27.5	8.3	38.1
1993	335	65.7	54.6	46.9	35.8	11.0	13.4	27.8	6.9	34.9
1994	341	76.0	63.9	58.4	37.8	14.7	17.6	33.7	9.4	43.4
1995	419	74.7	58.9	52.0	36.8	13.6	16.0	33.4	6.7	41.5
1996	271	70.1	59.8	55.4	36.2	14.4	15.5	32.8	8.1	39.1
1997	327	71.6	61.2	51.7	37.9	12.5	15.3	30.3	7.3	39.1
1998	380	74.5	56.6	53.5	36.8	13.4	17.9	32.6	9.2	42.9
1999	302	73.5	62.6	53.0	38.7	13.6	20.2	32.1	7.3	40.7
2000	339	73.8	62.5	54.3	37.8	12.7	17.1	31.3	7.1	39.5
2001	565	75.6	59.0	54.0	34.7	14.9	15.8	31.5	7.6	40.2
2002	524	70.2	61.1	56.5	32.8	18.4	10.9	38.0	6.1	45.0
2003	714	74.0	61.4	52.9	35.4	13.9	11.8	35.3	3.9	43.4
2004	577	77.8	61.4	53.2	34.7	15.3	17.2	31.4	9.0	40.0
2005	858	72.2	59.1	54.2	30.4	21.8	14.6	36.7	8.4	42.8
2006	717	71.1	54.3	49.2	35.8	11.7	16.0	29.2		
2007	762	69.7	56.8	47.5	32.7	12.9				
2008	710	71.0	55.4	49.9						
2009	657	70.8	58.0							
2010	625	74.4								

Source: MHEC Enrollment and Degree Information Systems

Trends in Retention and Graduation Rates
COPPIN STATE UNIVERSITY
 African American Students

Percent enrolled at original campus or graduated from **any** campus after:

Cohort	N	One Year	Two Years	Three Years	Four Years		Five Years		Six Years	
					Enrolled	Graduated	Enrolled	Graduated	Enrolled	Graduated
1990	304	67.1	52.3	43.7	36.2	3.6	17.4	16.5	10.2	22.7
1991	276	68.8	55.8	50.8	33.3	9.4	16.3	19.9	9.4	27.8
1992	325	73.2	50.5	40.6	30.2	5.2	15.4	16.0	10.2	22.1
1993	444	66.4	44.1	36.2	27.7	5.4	15.1	14.2	7.7	20.1
1994	364	66.5	48.9	43.4	33.2	5.5	16.5	15.9	9.9	25.8
1995	416	73.8	55.5	47.8	34.1	6.7	20.9	18.0	8.9	26.7
1996	492	70.3	54.9	46.7	36.8	5.5	20.1	18.5	9.6	29.2
1997	355	73.8	54.6	46.8	37.2	3.7	20.3	16.6	11.0	23.7
1998	439	72.0	53.3	44.8	32.6	7.0	17.3	19.6	8.7	26.6
1999	424	68.9	48.8	39.1	24.5	8.8	13.2	18.7	7.8	23.8
2000	396	71.3	50.3	39.7	28.3	4.3	15.7	13.4	7.3	20.2
2001	516	70.0	45.5	38.6	24.4	6.6	13.6	16.3	6.6	21.5
2002	562	69.2	49.5	38.4	26.7	5.6	12.6	15.1	6.6	18.5
2003	557	66.1	49.6	37.1	25.9	5.0	12.2	12.6	8.6	17.4
2004	580	63.1	44.3	35.0	26.9	4.3	15.2	10.9	9.0	17.4
2005	660	63.5	39.2	32.3	21.8	4.1	11.2	13.5	7.3	18.3
2006	490	60.0	43.5	35.9	25.5	4.7	15.3	13.5		
2007	384	58.6	35.2	31.3	26.0	4.4				
2008	554	61.0	41.9	34.8						
2009	524	59.7	42.8							
2010	451	66.3								

Source: MHEC Enrollment and Degree Information Systems

Trends in Retention and Graduation Rates
FROSTBURG STATE UNIVERSITY
African American Students

Percent enrolled at original campus or graduated from **any** campus after:

Cohort	N	One Year	Two Years	Three Years	Four Years		Five Years		Six Years	
					Enrolled	Graduated	Enrolled	Graduated	Enrolled	Graduated
1990	106	79.2	56.6	54.7	31.1	16.0	6.6	47.2	0.0	54.7
1991	75	66.7	56.0	45.3	32.0	9.3	10.7	32.0	1.3	49.3
1992	65	78.5	50.8	35.4	27.7	6.2	1.5	35.4	1.5	44.6
1993	92	70.7	55.4	51.1	39.1	8.7	13.0	31.5	2.2	46.8
1994	78	59.0	48.7	47.4	34.6	7.7	12.8	29.4	1.3	38.5
1995	85	72.9	45.9	38.8	23.5	7.1	7.1	32.9	1.2	44.7
1996	120	69.2	49.2	46.7	30.8	11.6	8.3	35.0	2.5	40.8
1997	106	71.7	58.5	50.9	29.2	17.0	11.3	35.9	4.7	45.3
1998	154	70.8	52.6	48.1	34.4	9.0	11.7	30.5	2.6	46.1
1999	146	78.8	65.8	58.2	35.6	17.2	9.6	44.5	0.7	54.8
2000	152	77.6	62.5	60.5	36.2	17.1	11.2	42.7	2.0	53.9
2001	116	75.0	56.0	48.3	29.3	12.1	6.0	38.8	0.0	49.1
2002	128	66.4	53.1	46.9	26.6	18.0	5.5	43.0	1.6	51.6
2003	128	78.1	64.1	56.3	28.1	21.1	9.4	43.0	3.1	53.9
2004	151	72.8	62.9	57.6	41.1	12.6	11.9	37.7	2.0	49.7
2005	186	76.3	55.9	53.8	35.5	10.2	8.6	40.3	1.6	51.1
2006	215	74.4	56.3	51.6	35.3	12.6	7.4	36.3		
2007	289	77.9	60.2	52.2	33.2	14.2				
2008	290	72.4	58.3	53.1						
2009	329	73.3	60.8							
2010	269	70.6								

Source: MHEC Enrollment and Degree Information Systems

Trends in Retention and Graduation Rates
MORGAN STATE UNIVERSITY
African American Students

Percent enrolled at original campus or graduated from **any** campus after:

Cohort	N	One Year	Two Years	Three Years	Four Years		Five Years		Six Years	
					Enrolled	Graduated	Enrolled	Graduated	Enrolled	Graduated
1990	769	70.9	56.0	50.6	32.4	9.8	17.6	26.2	10.4	33.0
1991	1,023	70.1	57.1	50.9	32.3	14.5	14.1	30.4	6.1	36.8
1992	1,108	76.1	58.9	53.8	33.5	16.4	13.7	33.2	5.6	39.8
1993	1,056	76.8	63.7	56.0	34.9	15.4	14.7	34.8	6.5	41.1
1994	965	77.5	62.7	52.7	32.2	16.1	11.9	32.6	5.2	40.3
1995	1,035	75.0	58.3	52.8	29.5	17.5	12.0	32.6	5.5	39.6
1996	968	72.4	61.0	54.0	30.5	17.4	13.4	34.3	6.8	41.0
1997	1,096	75.5	61.0	53.7	32.2	16.8	13.0	33.0	5.7	40.8
1998	1,130	73.6	58.9	53.5	32.7	14.4	11.8	33.0	6.5	41.5
1999	1,070	73.5	62.7	55.5	33.8	16.4	14.5	35.0	7.4	42.9
2000	1,008	71.9	55.5	49.8	31.3	14.6	13.4	31.3	6.3	39.9
2001	1,045	71.0	58.7	52.4	33.8	14.3	13.2	32.0	6.9	39.7
2002	1,166	69.1	56.4	51.1	34.3	11.7	15.6	27.2	6.8	34.6
2003	1,155	71.2	57.2	50.1	33.4	11.6	15.2	27.4	7.6	35.4
2004	1,260	68.4	53.6	47.0	32.6	11.7	14.0	25.9	7.0	33.7
2005	683	66	52.4	45.7	28.3	11.3	14.8	23.7	7.8	30.0
2006	1,285	60.5	47.7	41.6	27.2	11.1	12.2	24.3		
2007	1,212	67.4	52.5	47.9	34.1	9.7				
2008	1,375	68.5	54.3	48.2						
2009	1,203	67.3	52.5							
2010	1,098	72.8								

Source: MHEC Enrollment and Degree Information Systems

Trends in Retention and Graduation Rates
SALISBURY UNIVERSITY
African American Students

Percent enrolled at original campus or graduated from **any** campus after:

Cohort	N	One Year	Two Years	Three Years	Four Years		Five Years		Six Years	
					Enrolled	Graduated	Enrolled	Graduated	Enrolled	Graduated
1990	42	85.7	73.8	61.9	33.3	26.2	11.9	50.0	4.8	54.8
1991	37	67.6	54.1	54.1	32.4	13.5	8.1	35.1	8.1	43.2
1992	46	73.9	63.0	60.9	34.8	23.9	17.4	41.3	2.2	60.8
1993	54	59.3	55.6	51.9	22.2	27.8	5.6	46.3	1.9	51.9
1994	53	73.6	67.9	62.3	22.6	34.0	5.7	51.0	0.0	60.4
1995	33	81.8	75.8	66.7	33.3	30.3	3.0	57.6	0.0	60.6
1996	61	70.5	62.3	55.7	29.5	24.6	11.5	45.9	4.9	54.1
1997	46	60.9	58.6	52.2	19.6	28.2	4.3	45.6	2.2	54.3
1998	41	70.7	63.4	53.7	9.8	31.7	4.9	51.2	0.0	58.5
1999	35	62.9	62.9	65.8	34.3	28.6	11.4	60.0	2.9	65.7
2000	32	78.1	62.5	56.2	25.0	40.7	9.4	56.3	0.0	62.5
2001	86	74.4	65.2	62.8	26.7	27.9	5.8	53.5	1.2	58.1
2002	84	75.0	73.8	64.3	36.9	20.2	8.3	48.8	2.4	64.3
2003	79	82.3	74.7	73.5	36.7	26.6	7.6	58.2	0.0	64.6
2004	75	80.0	65.3	57.3	30.7	25.3	2.7	50.7	0.0	60.0
2005	94	83	66.0	67.0	33.0	25.5	7.4	52.1	3.2	62.8
2006	125	85.6	76.8	73.6	32.8	32.8	9.6	60.0		
2007	129	76.0	63.6	62.0	23.3	29.5				
2008	115	78.3	64.3	60.0						
2009	133	80.5	67.7							
2010	144	82.6								

Source: MHEC Enrollment and Degree Information Systems

Trends in Retention and Graduation Rates
ST. MARY'S COLLEGE OF MARYLAND
African American Students

Percent enrolled at original campus or graduated from **any** campus after:

Cohort	N	One Year	Two Years	Three Years	Four Years		Five Years		Six Years	
					Enrolled	Graduated	Enrolled	Graduated	Enrolled	Graduated
1990	23	91.3	82.6	87.0	17.4	69.5	8.7	82.6	0.0	86.9
1991	35	88.6	77.1	71.4	20.0	48.6	2.9	71.5	2.9	71.5
1992	28	85.7	71.4	64.3	28.6	32.1	0.0	71.4	0.0	71.4
1993	36	91.7	72.2	66.7	19.4	44.5	0.0	69.5	0.0	72.2
1994	43	74.4	51.2	55.8	11.6	44.2	0.0	62.8	0.0	65.1
1995	37	86.5	73.0	67.6	18.9	43.2	0.0	67.6	0.0	73.0
1996	33	87.9	81.8	84.8	6.1	66.7	0.0	81.8	0.0	81.8
1997	36	86.1	75.0	69.5	11.1	58.4	0.0	75.0	0.0	75.0
1998	39	92.3	76.9	74.4	23.1	41.0	2.6	66.6	2.6	71.8
1999	25	72.0	68.0	60.0	8.0	40.0	0.0	56.0	0.0	60.0
2000	22	81.8	81.8	81.8	4.5	68.2	0.0	72.7	0.0	72.7
2001	33	81.1	75.8	75.7	9.1	66.7	3.0	75.8	3.0	75.8
2002	33	66.7	54.5	54.5	9.1	36.4	0.0	54.5	0.0	57.6
2003	32	90.6	90.6	87.5	18.8	59.4	0.0	81.3	0.0	81.3
2004	31	100.0	93.5	87.1	19.4	71.0	3.2	77.4	0.0	80.6
2005	51	86.3	80.4	80.4	13.7	64.7	3.9	74.5	0.0	76.5
2006	35	77.1	65.7	65.7	8.6	51.4	0.0	60.0		
2007	43	90.7	79.1	79.1	23.3	48.8				
2008	35	97.1	91.4	80.0						
2009	41	97.6	85.4							
2010	37	86.5								

Source: MHEC Enrollment and Degree Information Systems

Trends in Retention and Graduation Rates
TOWSON UNIVERSITY
 African American Students

Percent enrolled at original campus or graduated from **any** campus after:

Cohort	N	One Year	Two Years	Three Years	Four Years		Five Years		Six Years	
					Enrolled	Graduated	Enrolled	Graduated	Enrolled	Graduated
1990	124	82.3	76.6	71.8	50.0	14.5	13.7	45.2	11.3	54.8
1991	140	75.7	68.6	64.3	40.0	15.0	14.3	43.6	2.9	52.8
1992	127	85.0	75.6	66.1	33.9	24.4	10.2	45.7	7.1	50.4
1993	140	77.1	66.4	60.7	36.4	19.3	12.9	40.0	5.7	48.6
1994	186	78.5	71.0	62.3	40.9	18.3	11.3	43.0	5.4	49.0
1995	147	81.6	70.7	66.0	40.1	17.0	12.2	39.5	6.1	44.9
1996	159	85.5	70.4	67.3	42.1	15.1	15.7	42.8	7.5	48.4
1997	171	80.1	73.1	62.6	34.5	24.0	14.6	44.4	10.5	50.3
1998	163	82.2	72.4	67.5	43.6	16.5	11.7	45.4	2.6	55.2
1999	192	85.4	76.5	73.4	37.5	28.6	17.2	49.0	7.8	57.8
2000	149	87.2	78.5	75.2	40.9	26.8	10.1	55.7	3.4	63.7
2001	152	93.4	82.9	77.7	38.8	31.0	8.6	54.6	5.9	62.5
2002	153	92.2	81.0	77.1	37.9	32.1	11.8	57.5	2.0	69.9
2003	162	90.1	87.0	84.0	42.0	37.7	8.0	67.9	5.6	75.9
2004	169	89.9	83.4	81.7	41.4	30.8	10.1	64.5	2.4	76.9
2005	269	84.8	74.0	68.0	40.1	24.9	14.9	47.6	6.7	56.9
2006	305	84.9	77.4	68.5	41.0	23.0	11.5	53.8		
2007	261	84.3	74.7	69.0	38.3	27.6				
2008	290	87.6	81.4	78.3						
2009	293	84.0	79.2							
2010	285	84.6								

Source: MHEC Enrollment and Degree Information Systems

Trends in Retention and Graduation Rates
UNIVERSITY OF BALTIMORE
 African American Students

Percent enrolled at original campus or graduated from **any** campus after:

Cohort	N	One Year	Two Years	Three Years	Four Years		Five Years		Six Years	
					Enrolled	Graduated	Enrolled	Graduated	Enrolled	Graduated
2007	52	76.9	65.4	53.8	30.8	13.5				
2008	66	74.2	45.5	43.9						
2009	93	77.4	52.7							
2010	98	79.6								

Source: MHEC Enrollment and Degree Information Systems

Trends in Retention and Graduation Rates
UNIVERSITY OF MARYLAND BALTIMORE COUNTY
African American Students

Percent enrolled at original campus or graduated from **any** campus after:

Cohort	N	One Year	Two Years	Three Years	Four Years		Five Years		Six Years	
					Enrolled	Graduated	Enrolled	Graduated	Enrolled	Graduated
1990	169	81.7	71.6	63.9	47.3	13.0	17.2	36.7	3.6	54.5
1991	171	85.4	68.4	63.2	39.2	21.7	8.8	49.1	4.1	58.5
1992	130	86.2	74.6	63.1	33.8	26.2	9.2	46.1	2.3	53.0
1993	154	92.2	85.1	73.4	39.6	24.0	16.2	47.4	3.2	60.3
1994	128	93.0	80.5	72.7	35.2	30.5	7.0	57.8	2.3	63.3
1995	167	89.8	73.7	70.7	27.5	35.9	7.2	57.5	4.2	61.7
1996	145	88.3	74.5	65.5	32.4	29.0	7.6	54.0	6.2	58.6
1997	183	90.7	78.7	71.0	39.3	29.5	10.4	50.8	2.2	61.2
1998	179	92.7	77.1	70.4	38.0	26.9	10.6	55.4	4.5	64.3
1999	185	87.6	77.8	71.9	39.5	29.2	13.5	52.9	5.4	62.7
2000	166	89.8	75.3	71.1	44.6	25.3	13.9	52.4	6.0	62.0
2001	149	86.6	75.2	73.2	35.6	34.2	6.7	57.1	2.7	64.4
2002	119	86.6	75.6	68.9	41.2	21.8	13.4	52.9	5.9	62.2
2003	157	89.8	80.3	75.2	33.8	33.1	8.9	56.7	3.8	65.6
2004	131	87.8	74.8	70.2	35.9	30.5	11.5	56.5	3.1	65.6
2005	143	91.6	77.6	73.4	35.0	33.6	9.8	57.3	4.2	62.9
2006	167	90.4	81.4	76.6	34.7	34.1	8.4	55.7		
2007	200	90.5	80.0	77.5	37.0	29.0				
2008	209	87.1	72.7	73.7						
2009	226	90.3	78.3							
2010	197	84.3								

Source: MHEC Enrollment and Degree Information Systems

Trends in Retention and Graduation Rates
UNIVERSITY OF MARYLAND, COLLEGE PARK
 African American Students

Percent enrolled at original campus or graduated from **any** campus after:

Cohort	N	One Year	Two Years	Three Years	Four Years		Five Years		Six Years	
					Enrolled	Graduated	Enrolled	Graduated	Enrolled	Graduated
1990	471	82.6	68.4	60.1	38.4	13.4	17.4	34.6	6.8	45.3
1991	405	75.6	61.2	56.5	39.0	14.8	12.1	36.8	4.4	44.9
1992	352	79.5	67.9	66.5	43.2	14.5	14.2	40.7	5.7	47.7
1993	494	82.6	66.4	60.9	41.1	14.2	14.8	36.6	6.3	45.3
1994	526	82.3	70.9	61.8	39.0	15.4	11.0	41.3	2.9	52.1
1995	576	83.3	68.1	61.3	38.9	14.8	14.8	37.0	5.2	48.3
1996	553	83.4	73.2	67.8	41.0	20.8	11.8	45.7	3.4	56.6
1997	579	85.7	73.9	69.6	40.9	20.4	11.7	46.8	3.3	58.0
1998	517	84.3	74.7	68.1	38.1	22.2	11.6	47.4	3.3	56.8
1999	528	88.4	81.3	76.3	37.7	30.5	8.5	57.7	2.8	65.9
2000	476	87.0	77.9	73.5	34.5	31.1	6.7	63.2	1.7	70.4
2001	526	87.6	78.3	74.0	29.8	37.2	6.8	61.4	2.7	67.9
2002	451	88.5	80.3	76.9	27.7	38.8	7.5	62.1	2.7	68.3
2003	518	88.8	80.3	77.4	30.7	40.3	6.2	64.5	2.5	70.8
2004	512	86.9	78.7	74.6	29.5	41.0	5.5	64.5	2.3	71.1
2005	563	89.2	82.1	77.8	27.7	41.9	5.7	68.7	2.0	74.7
2006	611	90.8	83.5	80.5	29.6	42.9	5.6	68.7		
2007	565	95.2	85.8	83.7	32.2	42.8				
2008	537	90.7	85.7	80.6						
2009	385	94.5	89.9							
2010	529	93.6								

Source: MHEC Enrollment and Degree Information Systems

Trends in Retention and Graduation Rates
UNIVERSITY OF MARYLAND EASTERN SHORE
African American Students

Percent enrolled at original campus or graduated from any campus after:

Cohort	N	One Year	Two Years	Three Years	Four Years		Five Years		Six Years	
					Enrolled	Graduated	Enrolled	Graduated	Enrolled	Graduated
1990	404	68.1	49.5	42.3	22.8	14.3	6.2	26.5	1.5	34.2
1991	463	73.7	56.2	47.9	21.8	14.2	5.0	30.7	0.9	36.0
1992	395	70.9	52.7	41.0	18.5	14.2	4.1	29.6	2.3	35.2
1993	435	74.3	53.8	44.4	21.1	20.0	4.1	35.8	0.7	41.3
1994	604	66.7	49.5	44.2	20.0	19.4	4.5	36.1	1.7	42.5
1995	602	77.4	59.0	49.1	22.3	23.4	6.0	42.1	2.3	48.0
1996	615	76.9	62.6	49.3	22.6	25.4	4.2	44.5	1.0	50.9
1997	545	79.1	59.8	53.2	21.1	28.7	4.6	45.9	1.1	52.9
1998	523	71.7	56.6	49.7	21.8	26.7	3.8	44.0	1.3	49.7
1999	465	76.6	58.3	53.8	23.0	27.1	5.6	44.9	0.9	49.5
2000	670	67.0	54.8	47.5	21.9	20.1	7.8	34.9	2.7	41.4
2001	883	70.1	57.4	47.7	20.6	23.3	5.3	39.3	2.4	44.8
2002	734	70.9	53.0	46.5	19.9	24.1	5.0	40.2	1.6	45.8
2003	794	67.4	50.0	43.6	21.3	19.3	5.9	34.5	2.6	39.0
2004	753	64.4	48.7	41.6	20.1	17.9	8.4	30.0	2.8	36.1
2005	867	64.8	46.5	40.8	20.8	17.2	7.3	31.1	3.5	36.5
2006	1,005	65.2	47.1	42.5	25.2	13.5	8.3	30.6		
2007	779	65.7	47.8	43.8	27.7	12.8				
2008	931	69.6	52.2	47.4						
2009	787	65.7	52.1							
2010	822	69.0								

Source: MHEC Enrollment and Degree Information Systems

Trends in Retention and Graduation Rates
BOWIE STATE UNIVERSITY
 White Students

Percent enrolled at original campus or graduated from **any** campus after:

Cohort	N	One Year	Two Years	Three Years	Four Years		Five Years		Six Years	
					Enrolled	Graduated	Enrolled	Graduated	Enrolled	Graduated
1990	21	57.1	47.6	38.1	14.3	0.0	9.5	9.6	4.8	9.6
1991	26	69.2	57.7	46.1	30.8	15.4	11.5	34.6	3.8	46.2
1992	21	52.4	33.3	28.6	9.5	23.8	4.8	38.1	0.0	42.8
1993	16	56.3	50.0	31.3	25.0	6.3	6.3	18.8	6.3	25.0
1994	18	50.0	33.3	33.3	22.2	0.0	0.0	33.3	0.0	33.3
1995	23	60.9	56.5	47.8	26.1	21.7	4.3	34.7	8.7	34.7
1996	21	81.0	66.7	57.2	38.1	9.5	0.0	38.1	0.0	42.9
1997	19	68.4	73.7	63.2	31.6	21.1	0.0	36.8	5.3	36.8
1998	23	52.2	30.4	21.7	8.7	13.0	0.0	21.7	0.0	21.7
1999	23	52.2	39.1	43.4	21.7	26.0	4.3	43.5	0.0	47.8
2000	10	*	*	*	*	*	*	*	*	*
2001	12	*	*	*	*	*	*	*	*	*
2002	16	68.8	62.6	50.1	12.5	37.6	12.5	43.8	12.5	43.8
2003	18	44.4	33.3	33.4	11.1	22.2	0.0	38.9	0.0	44.4
2004	18	61.1	33.3	33.3	22.2	16.7	0.0	38.9	0.0	50.0
2005	21	66.7	61.9	66.7	4.8	57.1	0.0	66.7	0.0	71.4
2006	6	*	*	*	*	*	*	*	*	*
2007	10	*	*	*	*	*	*	*	*	*
2008	12	*	*	*	*	*	*	*	*	*
2009	9	*	*	*	*	*	*	*	*	*
2010	10	*	*	*	*	*	*	*	*	*

*N less than 15

Source: MHEC Enrollment and Degree Information Systems

Trends in Retention and Graduation Rates
COPPIN STATE UNIVERSITY
 White Students

Percent enrolled at original campus or graduated from **any** campus after:

Cohort	N	One Year	Two Years	Three Years	Four Years		Five Years		Six Years	
					Enrolled	Graduated	Enrolled	Graduated	Enrolled	Graduated
1990	11	*	*	*	*	*	*	*	*	*
1991	19	52.6	42.1	31.6	0.0	15.8	0.0	15.8	0.0	15.8
1992	12	*	*	*	*	*	*	*	*	*
1993	33	36.4	3.0	3.0	0.0	0.0	0.0	3.0	0.0	0.0
1994	9	*	*	*	*	*	*	*	*	*
1995	1	*	*	*	*	*	*	*	*	*
1996	9	*	*	*	*	*	*	*	*	*
1997	7	*	*	*	*	*	*	*	*	*
1998	7	*	*	*	*	*	*	*	*	*
1999	2	*	*	*	*	*	*	*	*	*
2000	1	*	*	*	*	*	*	*	*	*
2001	4	*	*	*	*	*	*	*	*	*
2002	1	*	*	*	*	*	*	*	*	*
2003	4	*	*	*	*	*	*	*	*	*
2004	2	*	*	*	*	*	*	*	*	*
2005	0	*	*	*	*	*	*	*	*	*
2006	2	*	*	*	*	*	*	*	*	*
2007	0	*	*	*	*	*	*	*	*	*
2008	0	*	*	*	*	*	*	*	*	*
2009	1	*	*	*	*	*	*	*	*	*
2010	9	*	*	*	*	*	*	*	*	*

*N less than 15

Source: MHEC Enrollment and Degree Information Systems

Trends in Retention and Graduation Rates
FROSTBURG STATE UNIVERSITY
 White Students

Percent enrolled at original campus or graduated from **any** campus after:

Cohort	N	One Year	Two Years	Three Years	Four Years		Five Years		Six Years	
					Enrolled	Graduated	Enrolled	Graduated	Enrolled	Graduated
1990	714	78.2	66.4	61.7	32.9	28.0	5.6	57.8	1.8	64.1
1991	654	75.5	65.0	61.6	29.4	28.0	6.1	55.1	1.2	62.4
1992	736	76.1	64.3	59.8	27.0	31.0	3.7	59.3	1.4	65.6
1993	779	71.4	60.7	56.1	28.4	24.1	5.5	51.9	1.4	58.4
1994	701	72.3	62.6	57.3	30.8	26.2	5.1	56.2	2.4	62.0
1995	786	70.7	58.8	53.9	28.2	24.9	6.0	53.0	1.5	60.7
1996	796	71.0	59.2	54.6	30.3	24.2	5.5	53.7	1.5	59.2
1997	722	73.3	61.2	59.7	28.1	28.7	4.6	56.8	1.9	60.8
1998	724	73.3	60.8	56.7	30.2	24.2	5.1	52.2	1.8	59.6
1999	718	74.7	61.1	56.3	31.3	21.3	5.8	49.2	1.3	57.9
2000	797	69.6	59.1	56.2	29.2	22.8	4.8	50.0	1.8	56.7
2001	743	76.3	63.5	59.0	28.4	24.6	3.5	53.3	0.8	59.9
2002	801	71.9	61.7	56.5	26.7	25.2	6.4	51.7	2.1	58.9
2003	783	73.9	61.9	58.0	30.1	24.5	5.7	55.3	1.5	61.7
2004	743	70.3	59.0	55.3	28.3	26.6	5.7	52.6	2.6	57.7
2005	655	71.1	57.7	55.1	28.7	25.3	6.4	48.9	2.0	54.7
2006	702	66.0	57.1	53.8	26.8	22.6	5.1	49.0		
2007	682	73.9	61.7	57.5	24.6	28.9				
2008	653	72.1	59.7	55.4						
2009	608	75.2	63.0							
2010	649	71.5								

Source: MHEC Enrollment and Degree Information Systems

Trends in Retention and Graduation Rates
SALISBURY UNIVERSITY
 White Students

Percent enrolled at original campus or graduated from **any** campus after:

Cohort	N	One Year	Two Years	Three Years	Four Years		Five Years		Six Years	
					Enrolled	Graduated	Enrolled	Graduated	Enrolled	Graduated
1990	601	78.7	67.4	63.6	19.3	45.0	4.7	62.2	2.0	66.5
1991	658	79.9	69.0	65.2	20.1	44.4	4.3	61.7	1.1	66.3
1992	569	83.8	72.8	66.8	20.7	45.0	4.4	66.1	2.1	69.8
1993	653	80.2	67.4	64.8	20.1	44.2	4.6	62.6	1.2	67.2
1994	609	79.3	68.6	67.2	17.6	52.4	3.1	68.4	0.8	72.2
1995	591	83.6	75.1	73.5	17.9	54.6	3.2	71.7	1.7	75.5
1996	651	85.1	75.1	69.9	21.2	48.0	4.5	69.6	1.5	73.1
1997	819	83.6	74.4	72.6	21.4	50.8	3.5	71.9	1.7	74.9
1998	778	82.4	75.5	73.3	22.6	49.1	2.1	71.0	0.4	74.3
1999	766	84.2	77.2	73.7	16.6	56.1	2.6	72.5	1.0	74.7
2000	828	84.3	77.7	74.6	19.2	56.1	3.7	73.6	0.8	76.9
2001	749	83.4	75.2	74.2	22.4	50.7	2.7	73.4	0.7	77.8
2002	722	81.9	73.9	73.3	20.2	52.1	3.5	73.0	1.0	77.3
2003	714	82.8	72.0	71.1	18.3	51.0	3.9	69.3	2.0	73.2
2004	799	83.9	76.5	73.5	21.5	51.6	2.9	74.2	0.5	78.3
2005	790	81.5	73.9	71.9	17.2	52.0	3.0	69.2	1.0	73.3
2006	822	80.8	74.8	72.5	16.9	55.1	3.5	71.9		
2007	927	84.4	75.5	72.6	19.4	53.8				
2008	997	80.8	73.6	70.3						
2009	1,036	81.4	74.2							
2010	950	81.9								

Source: MHEC Enrollment and Degree Information Systems

Trends in Retention and Graduation Rates
TOWSON UNIVERSITY
 White Students

Percent enrolled at original campus or graduated from **any** campus after:

Cohort	N	One Year	Two Years	Three Years	Four Years		Five Years		Six Years	
					Enrolled	Graduated	Enrolled	Graduated	Enrolled	Graduated
1990	1,209	83.8	75.1	70.8	40.7	27.1	9.6	57.5	3.4	66.5
1991	1,014	82.1	72.3	67.1	35.6	27.5	9.1	55.2	4.0	62.9
1992	1,129	81.7	72.3	68.0	35.1	28.9	8.9	58.5	3.1	65.1
1993	989	80.8	72.3	68.5	36.5	28.8	7.7	59.4	3.0	65.1
1994	1,040	81.9	70.8	67.7	36.5	27.4	9.9	54.7	3.7	61.0
1995	1,237	82.1	74.7	71.4	33.3	35.0	6.5	62.0	2.3	67.6
1996	1,554	80.6	72.5	68.7	33.5	30.7	6.8	56.9	3.5	62.4
1997	1,482	82.7	73.1	69.5	30.6	32.7	8.7	56.7	3.1	62.1
1998	1,575	83.3	75.0	71.6	34.5	33.7	8.4	59.9	3.3	65.7
1999	1,700	81.6	73.5	69.7	33.9	31.5	9.2	55.6	3.4	62.2
2000	1,615	82.1	75.7	71.4	33.6	33.0	8.2	58.8	2.5	65.7
2001	1,507	86.5	76.8	74.0	33.2	37.5	6.6	64.9	2.4	70.7
2002	1,770	84.2	76.2	73.3	29.9	40.5	6.4	67.1	2.4	72.3
2003	1,262	86.5	81.5	79.3	27.9	47.4	5.3	72.3	1.7	77.3
2004	1,486	82.2	76.5	73.8	31.0	42.4	6.3	67.4	2.2	73.6
2005	1,694	79.2	73.3	70.4	26.3	43.7	6.5	67.1	3.1	71.1
2006	1,909	81.7	75.1	72.9	28.1	42.4	6.7	66.1		
2007	2,030	80.8	73.6	71.7	27.9	42.0				
2008	2,052	83.2	76.9	73.8						
2009	1,695	85.1	78.6							
2010	1,787	84.1								

Source: MHEC Enrollment and Degree Information Systems

Trends in Retention and Graduation Rates
TOWSON UNIVERSITY
 White Students

Percent enrolled at original campus or graduated from **any** campus after:

Cohort	N	One Year	Two Years	Three Years	Four Years		Five Years		Six Years	
					Enrolled	Graduated	Enrolled	Graduated	Enrolled	Graduated
2007	48	84.6	50.0	47.9	18.8	22.9				
2008	46	91.3	78.3	73.9						
2009	41	75.6	51.2							
2010	40	77.5								

Source: MHEC Enrollment and Degree Information Systems

Trends in Retention and Graduation Rates
UNIVERSITY OF MARYLAND BALTIMORE COUNTY
 White Students

Percent enrolled at original campus or graduated from **any** campus after:

Cohort	N	One Year	Two Years	Three Years	Four Years		Five Years		Six Years	
					Enrolled	Graduated	Enrolled	Graduated	Enrolled	Graduated
1990	677	80.4	65.4	55.4	31.9	21.1	10.3	50.1	5.0	58.7
1991	557	79.2	64.3	56.4	30.7	22.6	9.9	46.3	3.8	55.6
1992	597	82.4	68.2	60.4	34.8	22.6	8.5	50.6	4.4	58.0
1993	640	78.3	64.4	57.8	31.9	23.0	8.9	49.9	3.4	60.6
1994	485	78.1	62.5	56.9	32.6	22.3	9.9	48.2	4.5	57.5
1995	592	81.6	68.2	63.1	30.4	28.2	9.5	51.0	4.4	58.8
1996	638	80.9	68.5	62.9	29.6	27.8	8.3	50.5	3.9	57.0
1997	660	81.5	68.2	60.6	28.6	29.7	7.1	52.2	3.0	59.8
1998	746	82.8	67.2	61.5	31.1	27.7	9.5	51.2	3.5	61.3
1999	858	80.4	67.4	63.7	27.4	32.1	6.8	55.8	2.9	62.5
2000	794	81.1	68.3	64.4	28.5	31.9	7.2	56.8	3.0	64.1
2001	828	83.1	71.7	67.4	28.5	35.6	7.4	58.3	3.9	65.0
2002	857	83.5	73.5	68.5	30.6	34.9	8.1	59.0	4.0	68.0
2003	881	81.5	70.9	68.1	27.9	38.3	8.1	60.6	3.2	69.5
2004	864	82.3	70.1	65.9	24.4	39.5	5.7	64.4	2.4	70.0
2005	818	81.2	68.1	64.5	26.3	37.2	6.6	61.2	4.0	66.5
2006	756	83.3	74.1	71.6	29.0	40.2	8.2	63.2		
2007	740	86.8	76.6	73.2	30.5	38.8				
2008	776	84.9	73.2	67.8						
2009	797	81.4	72.5							
2010	724	83.6								

Source: MHEC Enrollment and Degree Information Systems

Trends in Retention and Graduation Rates
UNIVERSITY OF MARYLAND, COLLEGE PARK
 White Students

Percent enrolled at original campus or graduated from **any** campus after:

Cohort	N	One Year	Two Years	Three Years	Four Years		Five Years		Six Years	
					Enrolled	Graduated	Enrolled	Graduated	Enrolled	Graduated
1990	2,034	83.9	73.5	70.0	33.1	30.3	8.9	57.4	3.5	65.3
1991	2,007	82.3	73.0	70.1	37.3	28.7	8.3	59.4	3.0	66.3
1992	2,036	83.6	74.4	71.1	33.8	32.4	7.6	59.7	2.5	67.2
1993	1,948	85.3	75.8	72.4	32.9	34.0	7.4	61.7	2.7	68.4
1994	2,297	84.6	74.9	72.0	31.0	34.7	6.3	61.8	2.4	67.6
1995	2,210	86.6	76.0	74.1	29.4	39.1	6.9	63.1	2.7	69.1
1996	2,220	87.8	78.4	75.8	28.2	42.2	6.0	66.8	2.1	72.1
1997	2,463	87.9	79.8	77.5	27.2	45.1	5.2	68.7	1.4	73.9
1998	2,545	90.3	81.3	79.9	25.9	49.8	4.6	73.0	1.8	77.0
1999	2,472	90.4	83.5	82.4	25.8	51.1	4.0	74.8	1.5	79.0
2000	2,476	91.4	84.8	83.3	23.1	55.2	3.8	77.8	1.6	81.7
2001	2,764	92.4	85.4	83.9	19.0	60.4	2.7	79.2	0.9	82.6
2002	2,500	92.6	85.6	85.4	16.2	64.4	1.9	81.9	0.8	84.4
2003	2,448	92.2	85.5	86.0	17.4	63.2	2.5	82.2	0.9	85.1
2004	2,437	92.7	86.4	84.4	16.5	64.4	2.0	81.7	0.8	84.4
2005	2,417	92.1	85.7	85.0	12.7	68.9	1.5	83.1	0.7	84.8
2006	2,194	92.6	85.8	85.9	16.3	65.5	3.1	80.8		
2007	2,556	93.3	87.4	87.2	14.7	68.2				
2008	2,272	93.1	88.2	86.5						
2009	2,635	94.9	89.1							
2010	2,171	94.5								

Source: MHEC Enrollment and Degree Information Systems

Trends in Retention and Graduation Rates
UNIVERSITY OF MARYLAND EASTERN SHORE
 White Students

Percent enrolled at original campus or graduated from **any** campus after:

Cohort	N	One Year	Two Years	Three Years	Four Years		Five Years		Six Years	
					Enrolled	Graduated	Enrolled	Graduated	Enrolled	Graduated
1990	60	73.3	53.3	45.0	26.7	13.4	1.7	35.0	1.7	36.7
1991	70	64.3	35.7	31.4	8.6	17.2	4.3	34.3	1.4	37.2
1992	76	56.6	38.2	23.7	9.2	11.8	3.9	25.0	0.0	30.3
1993	59	59.3	28.8	27.1	15.3	11.9	0.0	27.1	1.7	33.9
1994	93	48.4	34.4	30.1	16.1	18.3	4.3	31.2	1.1	33.3
1995	65	55.4	41.5	26.2	9.2	20.0	3.1	36.9	3.1	41.6
1996	66	60.6	42.4	33.3	12.1	28.8	4.5	41.0	1.5	47.0
1997	53	54.7	41.5	35.8	13.2	32.0	1.9	43.3	1.9	47.1
1998	45	62.2	48.9	40.0	17.8	22.2	4.4	37.8	2.2	40.0
1999	39	51.3	41.0	38.5	12.8	23.0	10.3	35.9	5.1	48.7
2000	32	62.5	50.0	40.6	18.8	15.6	9.4	25.0	3.1	31.3
2001	78	66.7	56.5	48.8	11.5	29.5	7.7	35.9	2.6	43.6
2002	69	66.7	40.6	42.0	18.8	20.2	4.3	47.8	1.4	52.2
2003	55	58.2	32.7	27.2	5.5	20.0	3.6	25.5	3.6	27.3
2004	72	61.1	45.9	41.7	13.9	25.0	1.4	40.3	1.4	43.1
2005	37	67.6	35.1	29.7	24.3	5.4	10.8	21.6	0.0	29.7
2006	36	52.8	41.7	38.9	16.7	19.4	5.6	22.2		
2007	33	66.7	48.5	51.5	15.2	30.3				
2008	37	59.5	40.5	40.5						
2009	36	66.7	52.8							
2010	62	56.5								

Source: MHEC Enrollment and Degree Information Systems

Trends in Retention and Graduation Rates
MORGAN STATE UNIVERSITY
 White Students

Percent enrolled at original campus or graduated from **any** campus after:

Cohort	N	One Year	Two Years	Three Years	Four Years		Five Years		Six Years	
					Enrolled	Graduated	Enrolled	Graduated	Enrolled	Graduated
1990	8	*	*	*	*	*	*	*	*	*
1991	7	*	*	*	*	*	*	*	*	*
1992	9	*	*	*	*	*	*	*	*	*
1993	14	*	*	*	*	*	*	*	*	*
1994	9	*	*	*	*	*	*	*	*	*
1995	9	*	*	*	*	*	*	*	*	*
1996	5	*	*	*	*	*	*	*	*	*
1997	7	*	*	*	*	*	*	*	*	*
1998	6	*	*	*	*	*	*	*	*	*
1999	6	*	*	*	*	*	*	*	*	*
2000	4	*	*	*	*	*	*	*	*	*
2001	3	*	*	*	*	*	*	*	*	*
2002	6	*	*	*	*	*	*	*	*	*
2003	5	*	*	*	*	*	*	*	*	*
2004	11	*	*	*	*	*	*	*	*	*
2005	8	*	*	*	*	*	*	*	*	*
2006	13	*	*	*	*	*	*	*	*	*
2007	10	*	*	*	*	*	*	*	*	*
2008	14	*	*	*	*	*	*	*	*	*
2009	11	*	*	*	*	*	*	*	*	*
2010	5	*	*	*	*	*	*	*	*	*

*N less than 15

Source: MHEC Enrollment and Degree Information Systems

Trends in Retention and Graduation Rates
ST. MARY'S COLLEGE OF MARYLAND
 White Students

Percent enrolled at original campus or graduated from **any** campus after:

Cohort	N	One Year	Two Years	Three Years	Four Years		Five Years		Six Years	
					Enrolled	Graduated	Enrolled	Graduated	Enrolled	Graduated
1990	164	90.9	79.9	78.0	15.9	62.8	0.6	77.4	0.0	82.3
1991	178	87.1	79.2	75.2	9.0	68.0	0.0	80.9	0.6	82.0
1992	185	89.2	77.8	80.0	15.7	61.6	1.6	78.9	0.0	80.5
1993	226	87.2	73.0	74.8	8.8	64.2	0.4	77.0	0.4	78.3
1994	241	85.5	70.1	68.4	8.7	60.5	2.1	70.9	0.0	73.9
1995	289	87.2	79.9	78.2	13.5	64.0	2.4	77.6	1.7	78.5
1996	265	90.2	84.9	83.8	8.7	72.5	0.8	84.9	0.4	85.2
1997	291	85.9	79.0	77.3	8.2	72.1	1.4	81.1	0.0	82.5
1998	265	84.9	78.1	78.9	10.9	68.7	1.5	77.8	0.0	81.5
1999	226	82.7	76.5	75.6	8.4	68.6	0.9	77.8	1.3	78.7
2000	320	88.4	83.8	83.4	9.4	72.5	1.3	83.8	0.0	85.6
2001	375	93.1	87.5	86.4	5.3	81.0	1.3	86.4	0.0	88.8
2002	338	88.5	81.1	79.6	6.2	73.7	0.3	82.2	0.3	84.6
2003	322	90.4	84.8	80.7	7.1	76.1	2.5	83.5	0.3	86.3
2004	338	89.3	82.0	79.0	5.0	73.4	0.6	82.0	0.3	83.7
2005	369	86.2	81.3	81.3	8.9	72.6	1.1	80.8	0.3	83.5
2006	320	93.1	86.6	84.7	6.6	78.4	0.3	81.9		
2007	360	90.8	83.3	82.2	4.2	76.1				
2008	359	90.0	84.4	82.2						
2009	380	85.5	80.8							
2010	334	87.1								

Source: MHEC Enrollment and Degree Information Systems

Trends in Retention and Graduation Rates
Salisbury
 Asian Students

Percent enrolled at original campus or graduated from **any** campus after:

Cohort	N	One Year	Two Years	Three Years	Four Years		Five Years		Six Years	
					Enrolled	Graduated	Enrolled	Graduated	Enrolled	Graduated
2003	44	75.0	68.2	65.9	22.7	45.5	4.5	65.9	0.0	70.5
2004	25	72.0	60.0	60.0	28.0	44.0	4.0	68.0	0.0	76.0
2005	22	72.7	72.7	68.2	36.4	31.8	9.1	59.1	0.0	68.2
2006	34	79.4	64.7	55.9	14.7	47.1	2.9	55.9		
2007	42	81.0	57.1	47.6	31.0	21.4				
2008	35	71.4	71.4	65.7						
2009	36	61.1	63.9							
2010	53	75.5								

Source: MHEC Enrollment and Degree Information Systems

Trends in Retention and Graduation Rates
St. Mary's College of Maryland
 Asian Students

Percent enrolled at original campus or graduated from **any** campus after:

Cohort	N	One Year	Two Years	Three Years	Four Years		Five Years		Six Years	
					Enrolled	Graduated	Enrolled	Graduated	Enrolled	Graduated
1996	15	80	60	53.3	6.7	53.3	6.7	73.3	6.7	73.3
1997	*	*	*	*	*	*	*	*	*	*
1998	16	75.0	75.0	75.0	6.3	68.8	0.0	81.3	0.0	87.5
1999	16	68.8	62.5	56.3	43.8	6.3	12.5	56.3	6.3	62.5
2000	*	*	*	*	*	*	*	*	*	*
2001	20	65.0	60.0	55.0	15.0	50.0	0.0	70.0	0.0	70.0
2002	22	72.7	68.2	68.2	9.1	59.1	4.5	68.2	0.0	77.3
2003	19	94.7	84.2	84.2	5.3	78.9	0.0	89.5	0.0	89.5
2004	17	52.9	52.9	47.1	5.9	58.8	0.0	64.7	0.0	64.7
2005	22	90.9	90.9	90.9	4.5	86.4	0.0	90.9	0.0	90.9
2006	20	80.0	70.0	70.0	5.0	70.0	0.0	75.0		
2007	*	*	*	*	*	*				
2008	16	93.8	87.5	81.3						
2009	20	95.0	95.0							
2010	29	86.2								

Source: MHEC Enrollment and Degree Information Systems

Trends in Retention and Graduation Rates
University of Maryland Baltimore County
 Asian Students

Percent enrolled at original campus or graduated from **any** campus after:

Cohort	N	One Year	Two Years	Three Years	Four Years		Five Years		Six Years	
					Enrolled	Graduated	Enrolled	Graduated	Enrolled	Graduated
1994	110	90.0	69.1	59.1	30.9	25.5	7.3	52.7	4.5	60.0
1995	150	80.0	69.3	64.7	28.0	36.0	8.7	57.3	6.0	66.0
1996	158	88.6	75.9	70.3	37.3	28.5	12.7	54.4	4.4	65.8
1997	226	88.1	76.5	73.5	33.6	34.5	11.9	58.4	6.6	67.7
1998	225	82.2	74.2	65.3	34.2	32.4	11.1	57.3	7.1	68.0
1999	264	82.6	71.6	64.0	37.9	23.1	14.4	52.3	4.2	67.8
2000	244	82.8	69.7	66.8	38.1	28.3	16.0	54.5	4.9	66.8
2001	267	79.4	70.8	65.2	27.3	33.0	12.0	54.3	5.2	65.9
2002	297	76.8	64.6	57.6	30.6	30.0	12.1	54.5	5.1	64.6
2003	337	81.6	68.2	63.2	35.0	28.8	11.6	59.1	5.0	67.4
2004	301	77.4	65.4	59.1	32.6	25.9	11.0	54.5	6.3	62.1
2005	354	80.8	64.7	59.0	31.1	29.1	14.7	51.7	6.5	62.7
2006	380	85.8	67.4	62.9	29.2	35.8	11.6	55.5		
2007	377	86.5	74.5	68.2	34.0	31.8				
2008	435	85.3	71.7	68.5						
2009	355	85.9	74.9							
2010	374	86.9								

Source: MHEC Enrollment and Degree Information Systems

Trends in Retention and Graduation Rates
University of Maryland College Park
 Asian Students

Percent enrolled at original campus or graduated from **any** campus after:

Cohort	N	One Year	Two Years	Three Years	Four Years		Five Years		Six Years	
					Enrolled	Graduated	Enrolled	Graduated	Enrolled	Graduated
1994	522	89.3	79.1	74.9	49.6	19.3	14.2	51.0	5.4	62.8
1995	475	90.5	82.1	77.1	39.2	31.6	12.0	59.4	6.1	70.3
1996	428	91.6	87.1	85.0	40.7	35.5	11.9	64.7	3.7	74.8
1997	498	91.8	84.7	80.1	40.0	35.5	11.2	63.9	3.8	74.5
1998	574	92.5	86.2	83.4	48.8	29.8	14.3	62.9	4.0	74.4
1999	500	92.4	85.8	81.2	36.4	40.2	8.0	69.8	3.8	76.6
2000	566	93.5	88.0	85.3	35.2	44.5	6.7	75.3	3.4	82.2
2001	561	94.5	88.8	87.2	31.7	49.6	6.8	76.8	1.8	84.1
2002	467	95.9	90.1	87.6	28.7	56.5	4.5	81.4	1.5	86.1
2003	507	95.1	88.4	87.6	23.3	59.6	2.2	81.9	1.4	86.8
2004	559	96.1	91.2	88.0	25.2	59.4	4.7	82.8	0.9	87.3
2005	541	94.5	89.1	87.1	22.6	60.6	4.3	80.0	1.8	84.3
2006	569	94.4	90.2	89.8	24.8	59.6	5.1	80.8		
2007	565	95.6	88.0	88.8	24.8	60.2				
2008	575	96.3	92.3	88.5						
2009	667	96.7	92.8							
2010	622	96.1								

Source: MHEC Enrollment and Degree Information Systems

Trends in Retention and Graduation Rates
University of Maryland College Park
 Hispanic Students

Percent enrolled at original campus or graduated from **any** campus after:

Cohort	N	One Year	Two Years	Three Years	Four Years		Five Years		Six Years	
					Enrolled	Graduated	Enrolled	Graduated	Enrolled	Graduated
1994	170	80.6	62.9	60.0	38.2	16.5	12.4	38.2	4.1	52.4
1995	185	84.9	71.9	69.2	42.7	19.5	14.6	47.6	5.9	55.7
1996	189	82.5	76.7	72.5	37.6	26.5	13.2	49.7	4.8	59.8
1997	208	84.1	69.7	69.2	36.1	27.4	9.1	58.2	4.8	64.4
1998	200	88.5	74.5	70.0	33.5	34.0	8.0	59.0	2.5	68.5
1999	206	85.0	74.8	73.3	37.4	30.6	6.3	57.8	2.4	66.5
2000	190	91.1	83.2	82.1	33.7	38.4	6.8	70.0	1.1	77.9
2001	211	86.7	77.7	73.9	36.0	31.8	3.8	63.5	1.4	71.1
2002	212	92.0	82.1	79.7	31.6	44.3	5.7	69.3	2.8	77.4
2003	243	89.7	78.6	77.0	27.6	43.2	6.6	66.7	1.6	74.1
2004	220	90.5	84.5	82.3	27.7	45.5	6.4	70.0	5.0	74.5
2005	249	85.1	78.7	75.9	27.3	45.4	5.6	67.1	1.6	71.5
2006	288	91.0	81.9	80.2	24.3	51.7	5.6	72.2		
2007	281	92.2	84.0	82.9	23.8	52.3				
2008	251	90.0	86.5	81.3						
2009	258	94.2	87.6							
2010	295	93.2								

Source: MHEC Enrollment and Degree Information Systems

Trends in Retention and Graduation Rates
St. Mary's College of Maryland
 Hispanic Students

Percent enrolled at original campus or graduated from **any** campus after:

Cohort	N	One Year	Two Years	Three Years	Four Years		Five Years		Six Years	
					Enrolled	Graduated	Enrolled	Graduated	Enrolled	Graduated
2005	24	91.7	83.3	79.2	20.8	54.2	8.3	70.8	0.0	75.0
2006	29	86.2	79.3	75.9	6.9	65.5	3.5	69.0		
2007	19	73.7	73.7	68.4	15.8	47.4				
2008	22	90.9	81.8	77.3						
2009	16	93.8	81.3							
2010	28	92.9								

Source: MHEC Enrollment and Degree Information Systems

**INSTITUTIONAL TRENDS IN RETENTION AND
GRADUATION RATES
-BY GENDER-**

Trends in Retention and Graduation Rates
BOWIE STATE UNIVERSITY
 Male Students

Percent enrolled at original campus or graduated from **any** campus after:

Cohort	N	One Year	Two Years	Three Years	Four Years		Five Years		Six Years	
					Enrolled	Graduated	Enrolled	Graduated	Enrolled	Graduated
1989	172	71.5	59.9	52.3	34.9	4.7	14.5	20.4	8.7	26.8
1990	178	65.2	56.2	39.3	29.2	2.8	16.9	16.3	9.0	23.6
1991	163	71.2	54.6	44.8	37.4	6.1	14.7	23.3	6.1	31.3
1992	166	63.3	49.4	40.4	31.9	4.2	15.1	16.3	8.4	25.3
1993	157	56.1	48.4	38.9	34.4	7.0	14.6	17.2	6.4	26.1
1994	147	66.0	55.1	49.0	34.7	5.4	21.8	20.4	8.8	33.3
1995	186	68.8	54.3	50.5	37.1	7.0	17.7	25.3	8.6	34.9
1996	132	65.9	53.8	49.3	37.9	6.8	16.7	23.5	6.1	29.5
1997	169	66.3	57.4	50.9	43.2	5.3	20.1	23.1	11.8	31.4
1998	194	65.5	51.0	45.9	36.6	5.1	19.1	22.2	9.8	31.4
1999	154	68.8	55.1	45.5	34.4	7.8	23.4	18.8	6.5	27.9
2000	167	68.9	60.5	49.1	38.9	7.2	19.8	24.0	7.8	32.9
2001	241	72.6	50.6	44.4	32.0	9.1	17.8	21.6	8.7	30.7
2002	219	68.5	55.7	52.5	37.0	11.9	14.2	29.7	8.2	37.0
2003	284	71.1	57.0	47.2	36.3	7.4	12.0	28.9	4.6	37.0
2004	219	74.9	53.9	46.1	37.0	7.3	19.2	23.7	10.0	32.0
2005	356	66.0	54.5	48.6	30.9	15.4	13.8	31.5	10.1	36.8
2006	290	70.3	50.7	44.1	33.8	7.2	16.6	22.4		
2007	314	66.2	51.6	42.7	32.8	6.7				
2008	322	69.6	51.2	44.7						
2009	269	63.9	51.3							
2010	285	70.2								

Source: MHEC Enrollment and Degree Information Systems

Trends in Retention and Graduation Rates
COPPIN STATE UNIVERSITY
 Male Students

Percent enrolled at original campus or graduated from **any** campus after:

Cohort	N	One Year	Two Years	Three Years	Four Years		Five Years		Six Years	
					Enrolled	Graduated	Enrolled	Graduated	Enrolled	Graduated
1989	93	58.1	43.0	32.3	24.7	2.2	11.8	10.8	8.6	11.9
1990	141	55.3	41.8	34.8	29.8	2.1	12.8	13.5	4.3	15.6
1991	116	54.3	38.8	32.8	15.5	6.1	7.8	10.4	5.2	13.8
1992	167	62.3	32.3	25.1	16.2	0.6	10.2	7.8	7.8	11.4
1993	236	54.2	26.7	22.4	16.1	2.5	8.9	7.2	4.2	10.6
1994	129	55.8	38.8	33.3	24.8	5.4	11.6	12.5	7.8	18.7
1995	136	69.1	55.9	47.8	34.6	5.9	22.1	14.7	9.6	23.5
1996	157	62.4	45.9	37.5	24.8	6.4	12.1	17.2	3.8	26.1
1997	115	69.6	47.0	38.3	30.4	2.6	20.0	8.7	13.0	13.0
1998	120	70.0	48.3	40.0	30.0	8.3	14.2	15.8	8.3	20.0
1999	135	63.7	43.7	31.1	17.0	8.9	11.1	14.9	4.4	19.2
2000	128	65.6	43.8	34.4	19.5	3.9	12.5	7.9	5.5	12.5
2001	156	66.7	42.3	29.4	21.8	3.9	12.2	9.0	4.5	14.7
2002	149	70.5	43.6	31.5	23.5	2.0	10.1	10.7	6.0	12.8
2003	139	66.2	51.8	31.6	23.7	6.5	12.2	13.7	5.0	20.1
2004	150	62.0	46.0	30.7	25.3	5.3	15.3	10.7	8.7	16.0
2005	167	57.5	35.3	26.3	18.0	2.4	10.2	10.8	7.2	15.0
2006	109	63.3	34.9	27.5	23.9	2.8	16.5	10.1		
2007	140	57.1	40.0	30.0	22.9	7.1				
2008	154	60.4	30.7	29.9						
2009	159	54.1	37.1							
2010	159	60.4								

Source: MHEC Enrollment and Degree information Systems

Trends in Retention and Graduation Rates
FROSTBURG STATE UNIVERSITY
 Male Students

Percent enrolled at original campus or graduated from **any** campus after:

Cohort	N	One Year	Two Years	Three Years	Four Years		Five Years		Six Years	
					Enrolled	Graduated	Enrolled	Graduated	Enrolled	Graduated
1989	374	74.3	61.2	57.8	37.7	16.8	9.9	47.1	2.1	56.7
1990	416	76.9	64.4	59.6	38.7	18.7	7.5	51.5	2.4	58.6
1991	383	70.8	59.3	55.1	33.4	18.0	8.9	42.3	1.6	52.8
1992	387	70.8	58.7	51.7	31.8	16.6	4.9	46.2	2.3	54.7
1993	476	70.8	56.7	52.9	31.1	17.9	7.1	43.9	1.5	51.3
1994	385	67.3	57.1	53.0	34.5	16.3	7.3	47.0	2.9	53.5
1995	476	67.9	52.3	46.8	29.4	15.8	5.5	44.7	1.7	52.5
1996	495	66.7	53.3	49.1	31.5	15.5	7.5	42.1	2.2	49.3
1997	423	66.0	53.7	53.4	31.2	18.0	7.6	42.8	3.3	48.3
1998	448	68.1	56.3	52.9	32.4	16.0	8.9	40.9	2.5	50.9
1999	427	71.0	57.8	51.8	32.6	14.3	10.1	36.1	0.9	47.7
2000	531	66.5	53.7	49.2	32.0	14.1	6.4	39.2	2.6	46.3
2001	453	73.7	58.5	52.9	31.8	14.7	4.9	44.8	0.4	53.4
2002	507	65.5	53.1	48.1	28.6	14.6	7.9	39.1	2.4	48.5
2003	538	70.1	58.9	54.1	32.5	18.2	7.4	47.6	2.6	55.0
2004	530	67.9	58.1	51.5	33.4	17.2	8.7	43.2	2.5	52.1
2005	481	66.3	51.6	49.5	31.8	14.6	8.7	38.5	2.3	45.9
2006	552	62.3	51.8	48.7	30.4	13.9	7.8	36.6		
2007	539	73.1	58.4	54.2	28.9	18.7				
2008	552	68.7	56.7	51.8						
2009	524	68.9	55.9							
2010	556	68.7								

Source: MHEC Enrollment and Degree Information Systems

Trends in Retention and Graduation Rates
MORGAN STATE UNIVERSITY
 Male Students

Percent enrolled at original campus or graduated from **any** campus after:

Cohort	N	One Year	Two Years	Three Years	Four Years		Five Years		Six Years	
					Enrolled	Graduated	Enrolled	Graduated	Enrolled	Graduated
1989	312	71.5	53.8	44.9	38.5	5.4	15.1	22.1	10.3	28.2
1990	362	68.0	52.2	47.5	34.5	3.6	21.8	18.2	13.5	24.0
1991	423	64.1	48.5	43.5	31.0	7.8	15.4	21.7	4.7	29.5
1992	474	75.5	53.8	49.3	35.2	8.2	18.6	21.3	8.2	28.4
1993	450	71.1	59.8	49.3	35.3	6.7	16.4	24.7	8.4	30.4
1994	412	74.5	57.8	45.9	33.3	7.5	12.4	22.3	6.1	30.6
1995	425	67.5	50.6	45.2	32.0	8.2	14.4	21.2	7.3	28.2
1996	415	68.0	53.5	45.5	33.0	7.7	17.1	21.0	9.6	28.9
1997	493	74.2	57.8	48.7	38.3	6.3	17.4	20.5	7.9	29.0
1998	478	70.9	54.6	46.6	31.8	8.6	13.4	24.0	8.2	32.3
1999	497	73.2	59.0	49.7	36.8	8.4	17.5	25.3	9.7	34.6
2000	420	73.8	58.5	51.5	31.9	14.3	15.2	29.3	5.2	38.8
2001	464	70.7	57.7	48.0	33.4	8.2	14.2	23.2	7.3	29.7
2002	508	66.9	54.1	46.1	34.4	5.3	17.9	17.3	8.5	24.4
2003	525	71.0	54.5	47.2	35.2	6.5	17.1	20.8	9.9	28.4
2004	585	67.0	52.7	45.5	35.2	5.5	17.4	17.9	8.9	26.2
2005	346	67.1	53.2	45.4	29.8	5.8	19.4	15.3	10.4	23.2
2006	595	56.6	45.7	35.6	25.2	8.1	12.3	18.5		
2007	595	66.9	48.1	42.9	31.9	7.4				
2008	623	65.2	51.2	45.9						
2009	546	66.5	49.6							
2010	554	71.7								

Source: MHEC Enrollment and Degree Information Systems

Trends in Retention and Graduation Rates
SALISBURY UNIVERSITY
 Male Students

Percent enrolled at original campus or graduated from **any** campus after:

Cohort	N	One Year	Two Years	Three Years	Four Years		Five Years		Six Years	
					Enrolled	Graduated	Enrolled	Graduated	Enrolled	Graduated
1989	341	82.7	70.4	65.1	28.4	32.9	6.5	60.7	2.6	66.6
1990	293	78.5	63.8	59.0	27.0	34.1	7.5	55.6	2.4	60.1
1991	324	77.2	67.3	61.1	27.2	31.2	8.0	52.8	2.2	59.2
1992	262	83.2	69.1	64.1	30.9	30.6	9.9	55.0	2.3	64.9
1993	321	75.7	61.4	59.5	27.4	29.0	8.4	50.8	2.2	57.3
1994	283	77.7	67.1	65.4	24.0	41.4	4.9	62.2	0.7	67.9
1995	230	82.2	70.9	71.3	22.2	46.1	3.9	67.3	1.7	70.9
1996	313	81.5	70.3	64.8	32.3	33.6	8.0	60.7	2.6	66.4
1997	372	79.0	68.8	66.4	28.8	36.1	4.6	59.9	1.3	65.3
1998	401	77.1	68.8	67.3	28.4	35.9	4.2	61.1	0.7	66.3
1999	340	81.2	72.7	70.3	22.1	43.8	3.5	65.9	1.8	68.8
2000	394	81.2	72.9	70.8	26.9	41.9	7.4	62.9	1.3	68.3
2001	403	77.4	68.7	66.3	28.0	34.8	4.2	61.3	1.2	66.7
2002	379	74.9	66.2	64.1	29.3	33.5	7.4	57.8	1.6	65.4
2003	416	79.3	68.3	65.4	25.5	36.3	7.2	58.9	2.4	64.9
2004	446	80.5	71.9	69.3	30.9	34.5	4.0	64.3	0.7	71.5
2005	431	78.4	68.7	65.2	24.8	35.5	3.7	58.2	1.6	64.7
2006	440	77.0	70.0	67.0	23.9	40.9	5.9	62.7		
2007	497	81.7	68.8	65.8	27.6	35.6				
2008	506	73.3	66.0	61.5						
2009	538	75.1	64.3							
2010	480	78.1								

Source: MHEC Enrollment and Degree Information Systems

Trends in Retention and Graduation Rates
ST. MARY'S COLLEGE OF MARYLAND
 Male Students

Percent enrolled at original campus or graduated from **any** campus after:

Cohort	N	One Year	Two Years	Three Years	Four Years		Five Years		Six Years	
					Enrolled	Graduated	Enrolled	Graduated	Enrolled	Graduated
1989	101	87.1	76.2	74.3	28.7	49.5	5.0	72.3	1.0	76.3
1990	98	92.9	76.5	75.5	20.4	55.1	2.0	72.4	0.0	79.6
1991	95	84.2	75.8	69.5	15.8	54.8	2.1	73.7	1.1	75.8
1992	101	91.1	76.2	79.2	17.8	52.5	3.0	72.3	0.0	74.3
1993	132	79.5	69.7	69.7	12.9	52.3	0.0	73.5	0.0	74.3
1994	120	83.3	65.0	60.8	10.0	52.5	2.5	64.2	0.0	69.2
1995	151	87.4	80.1	78.1	20.5	56.9	2.0	78.2	2.0	80.1
1996	141	90.8	85.1	84.4	13.5	68.1	1.4	85.1	0.7	85.8
1997	156	85.3	76.9	73.1	10.9	62.8	0.6	74.3	0.0	75.7
1998	151	81.5	71.5	72.8	19.2	51.7	3.3	66.2	0.7	72.2
1999	124	78.2	70.2	65.3	7.3	56.4	1.6	66.1	1.6	66.9
2000	156	85.9	81.4	81.4	16.0	61.6	1.3	77.6	0.0	79.5
2001	169	91.7	84.6	82.2	10.7	68.7	3.0	79.3	0.6	83.4
2002	182	84.6	76.9	74.2	10.4	63.1	0.5	74.2	0.5	78.6
2003	171	88.3	83.6	80.7	15.2	63.7	4.1	76.0	1.2	79.5
2004	198	85.9	75.8	71.2	8.6	63.6	1.0	75.3	0.5	77.3
2005	193	89.6	82.9	83.9	16.1	67.9	2.6	80.8	0.5	83.9
2006	179	91.1	82.1	79.3	7.8	67.0	1.1	71.0		
2007	208	88.5	79.8	77.4	8.7	65.4				
2008	178	91.0	85.4	81.5						
2009	214	84.6	76.6							
2010	165	88.5								

Source: MHEC Enrollment and Degree Information Systems

Trends in Retention and Graduation Rates
TOWSON UNIVERSITY
 Male Students

Percent enrolled at original campus or graduated from **any** campus after:

Cohort	N	One Year	Two Years	Three Years	Four Years		Five Years		Six Years	
					Enrolled	Graduated	Enrolled	Graduated	Enrolled	Graduated
1989	548	81.2	73.4	69.4	44.5	18.3	11.9	48.2	4.4	58.7
1990	596	81.5	72.1	67.8	45.5	17.4	11.4	48.6	5.4	58.2
1991	503	75.9	68.4	61.0	42.1	14.3	13.1	41.4	5.2	51.5
1992	511	82.0	70.6	65.0	37.6	19.6	10.8	49.9	4.1	56.7
1993	494	77.5	68.6	63.0	42.1	17.0	9.9	47.1	4.3	53.8
1994	525	78.7	68.2	63.1	42.5	16.0	12.8	42.7	4.4	51.6
1995	554	78.2	70.8	65.7	38.4	22.3	8.7	49.1	3.4	56.0
1996	726	75.5	67.1	61.9	38.2	18.3	10.5	43.1	5.4	50.8
1997	732	79.5	69.7	61.9	34.0	23.1	12.6	45.9	5.7	52.5
1998	751	79.6	70.7	65.6	36.5	25.1	10.4	50.1	4.3	55.4
1999	831	77.7	70.5	65.4	36.6	22.2	11.8	44.9	4.7	52.5
2000	786	79.9	73.4	67.1	37.4	24.0	10.7	50.1	3.9	58.7
2001	665	83.9	73.7	69.9	39.4	25.1	8.9	54.1	4.2	61.8
2002	815	82.8	74.0	70.2	36.9	28.1	9.3	57.2	2.8	64.8
2003	565	82.6	77.5	74.1	35.5	32.8	8.1	62.3	3.2	69.3
2004	708	80.6	74.0	70.3	34.7	31.9	9.9	58.3	3.4	67.8
2005	863	78.0	68.8	64.9	32.0	31.4	10.1	56.2	4.4	63.5
2006	994	80.0	73.3	69.4	35.3	30.1	9.8	58.2		
2007	984	80.4	72.5	69.6	35.8	30.7				
2008	1,041	82.2	76.0	72.9						
2009	833	83.6	77.0							
2010	835	82.8								

Source: MHEC Enrollment and Degree Information Systems

Trends in Retention and Graduation Rates
University of Baltimore
 Male Students

Percent enrolled at original campus or graduated from **any** campus after:

Cohort	N	One Year	Two Years	Three Years	Four Years		Five Years		Six Years	
					Enrolled	Graduated	Enrolled	Graduated	Enrolled	Graduated
2007	67	68.7	55.2	44.8	16.4	17.9				
2008	86	87.2	69.8	68.6						
2009	77	76.6	55.8							
2010	81	76.5								

Source: MHEC Enrollment and Degree Information Systems

Trends in Retention and Graduation Rates
UNIVERSITY OF MARYLAND BALTIMORE COUNTY
 Male Students

Percent enrolled at original campus or graduated from **any** campus after:

Cohort	N	One Year	Two Years	Three Years	Four Years		Five Years		Six Years	
					Enrolled	Graduated	Enrolled	Graduated	Enrolled	Graduated
1989	462	81.4	68.0	62.3	47.8	13.6	16.5	40.2	6.3	54.5
1990	499	81.0	67.7	60.1	41.1	14.6	15.4	43.7	7.2	54.9
1991	439	77.7	64.5	60.1	39.9	14.4	16.9	37.1	7.3	48.8
1992	444	84.9	68.9	59.7	39.6	16.5	12.6	42.6	5.0	51.4
1993	505	80.0	66.7	59.6	37.6	18.4	13.1	42.7	4.4	55.0
1994	386	81.3	66.1	59.6	36.0	17.9	9.8	45.6	5.4	54.2
1995	480	79.8	66.7	62.3	34.4	23.0	10.4	47.9	5.6	55.6
1996	500	83.4	71.4	64.8	36.8	21.0	12.6	44.8	6.2	54.0
1997	531	84.0	70.3	65.1	35.6	25.6	9.4	48.4	4.0	56.2
1998	638	83.5	68.8	62.2	36.7	20.4	12.5	45.0	6.0	55.8
1999	762	78.7	64.7	61.2	32.4	24.0	10.9	47.9	4.2	57.8
2000	706	82.0	68.0	63.9	37.0	22.5	12.2	47.8	5.7	56.8
2001	730	80.7	69.9	65.5	32.5	27.2	9.6	52.0	5.1	60.3
2002	784	80.7	71.0	65.4	37.5	24.7	12.2	51.1	6.1	60.8
2003	831	80.3	68.1	65.2	35.4	26.0	11.8	51.5	5.4	61.1
2004	843	79.6	67.4	62.5	29.3	29.9	9.0	54.6	4.2	62.3
2005	831	80.9	66.9	63.5	32.6	29.1	11.4	53.4	5.8	60.9
2006	793	82.6	70.6	67.8	35.4	28.6	13.1	51.2		
2007	769	85.6	74.3	70.2	37.6	27.4				
2008	907	82.8	69.8	64.6						
2009	867	80.6	69.6							
2010	894	81.9								

Source: MHEC Enrollment and Degree Information Systems

Trends in Retention and Graduation Rates
UNIVERSITY OF MARYLAND, COLLEGE PARK
 Male Students

Percent enrolled at original campus or graduated from **any** campus after:

Cohort	N	One Year	Two Years	Three Years	Four Years		Five Years		Six Years	
					Enrolled	Graduated	Enrolled	Graduated	Enrolled	Graduated
1989	1,718	84.6	75.3	70.0	45.1	18.4	14.0	49.1	5.8	60.4
1990	1,601	80.9	69.7	66.5	39.4	19.5	14.1	46.0	5.1	56.1
1991	1,655	79.8	69.2	65.7	43.8	17.4	12.4	48.0	4.5	57.4
1992	1,570	81.9	72.9	69.8	43.6	20.5	14.1	47.6	4.5	58.9
1993	1,693	83.3	74.2	69.1	41.3	21.5	12.3	48.8	4.9	57.9
1994	1,914	82.4	72.7	67.3	39.8	20.3	10.9	48.6	4.0	58.0
1995	1,860	85.0	73.9	70.2	38.2	25.0	11.6	50.9	4.7	60.0
1996	1,842	86.7	76.0	73.3	38.6	28.5	10.5	56.2	3.6	64.3
1997	2,095	86.3	77.2	73.1	35.6	31.2	8.8	57.5	2.5	65.7
1998	2,051	89.2	80.2	76.4	35.7	35.0	8.4	61.9	2.9	69.0
1999	2,102	88.7	81.5	78.6	34.6	37.2	6.3	66.0	2.4	72.4
2000	2,051	89.3	82.4	79.2	32.8	40.0	6.4	68.4	2.5	75.0
2001	2,289	90.6	83.8	80.9	28.1	46.1	5.4	70.3	1.5	76.8
2002	1,935	92.4	85.5	83.7	23.8	53.4	3.9	75.6	1.7	80.0
2003	2,021	91.8	85.3	84.1	24.5	52.0	3.6	76.1	1.1	80.3
2004	2,124	91.0	85.1	82.6	25.5	50.8	3.8	74.5	1.7	79.0
2005	2,115	90.9	84.3	81.9	20.6	56.0	3.7	74.7	1.4	78.6
2006	2,048	91.7	84.8	83.3	24.1	53.5	5.3	73.8		
2007	2,198	92.7	86.0	84.8	23.8	54.4				
2008	2,078	92.3	88.0	84.1						
2009	2,257	94.1	88.9							
2010	2,069	93.9								

Source: MHEC Enrollment and Degree Information Systems

Trends in Retention and Graduation Rates
UNIVERSITY OF MARYLAND EASTERN SHORE
 Male Students

Percent enrolled at original campus or graduated from **any** campus after:

Cohort	N	One Year	Two Years	Three Years	Four Years		Five Years		Six Years	
					Enrolled	Graduated	Enrolled	Graduated	Enrolled	Graduated
1989	259	62.2	44.4	33.2	17.8	7.0	6.6	16.6	3.5	22.8
1990	249	66.7	50.6	40.6	24.1	9.2	4.8	21.3	1.6	26.9
1991	261	69.0	45.2	37.9	19.2	7.3	6.5	20.3	1.1	26.1
1992	256	62.5	50.0	34.4	16.4	10.5	5.9	18.8	1.6	25.0
1993	220	68.6	46.8	39.2	24.5	11.9	4.5	27.2	1.4	35.9
1994	355	55.5	40.8	36.1	22.0	9.3	4.5	23.4	1.1	28.5
1995	266	74.8	55.3	44.4	26.3	12.8	6.8	32.7	3.8	39.1
1996	273	72.9	59.0	44.7	24.5	18.0	7.0	36.6	2.2	43.6
1997	253	79.1	62.8	53.0	27.3	18.6	7.7	39.6	2.0	47.8
1998	237	71.3	57.0	47.7	25.7	23.2	5.1	40.1	2.1	46.9
1999	226	73.9	56.2	50.0	27.0	18.2	8.4	39.4	1.3	46.1
2000	286	64.3	51.3	46.5	26.9	11.9	8.7	26.2	3.8	31.4
2001	453	71.3	57.4	48.6	24.7	16.4	5.7	32.9	3.1	38.2
2002	364	71.7	54.7	48.1	28.0	17.3	8.5	34.9	3.3	40.9
2003	378	66.1	43.7	38.1	22.0	13.5	7.1	28.8	3.2	33.3
2004	364	57.7	47.5	39.6	24.7	11.5	11.3	22.8	3.6	29.7
2005	362	62.4	44.5	38.4	22.9	8.8	10.2	21.0	4.4	26.8
2006	410	67.3	51.5	46.6	30.7	9.3	14.9	22.7		
2007	315	63.8	45.1	40.3	32.4	5.1				
2008	377	65.0	49.3	42.2						
2009	351	65.0	53.3							
2010	379	65.4								

Source: MHEC Enrollment and Degree information Systems

Trends in Retention and Graduation Rates
BOWIE STATE UNIVERSITY
 Female Students

Percent enrolled at original campus or graduated from **any** campus after:

Cohort	N	One Year	Two Years	Three Years	Four Years		Five Years		Six Years	
					Enrolled	Graduated	Enrolled	Graduated	Enrolled	Graduated
1989	229	177.0	65.1	54.5	36.2	12.7	15.3	35.8	7.4	44.1
1990	239	69.9	54.8	49.8	34.3	11.3	13.8	34.7	5.4	45.2
1991	220	77.7	65.9	60.4	37.7	15.9	15.9	36.8	6.4	44.5
1992	239	80.3	65.3	59.4	40.2	13.4	15.9	35.6	7.5	46.9
1993	204	72.5	59.3	52.0	35.8	13.7	11.8	34.4	7.4	40.6
1994	222	79.7	65.8	60.4	37.4	18.9	12.6	41.9	8.6	48.2
1995	277	76.9	61.0	52.7	35.0	19.1	14.4	37.9	6.1	44.4
1996	173	74.6	65.3	60.1	34.7	20.3	12.7	41.1	8.7	46.9
1997	191	74.9	65.4	53.4	33.0	19.3	9.4	37.6	3.7	46.6
1998	225	80.0	59.1	56.4	33.8	20.5	14.7	40.0	8.0	49.4
1999	189	73.0	63.0	55.0	37.6	20.1	13.8	44.4	6.3	51.4
2000	196	76.5	63.3	56.1	35.2	17.3	15.3	36.2	7.1	44.9
2001	358	76.3	63.7	59.2	33.8	19.6	12.8	38.9	6.1	46.6
2002	357	70.6	63.5	57.7	28.3	23.8	8.4	43.4	4.8	49.9
2003	482	73.6	62.0	54.3	33.6	17.8	12.0	38.4	4.1	46.9
2004	408	77.9	63.7	56.6	33.6	19.6	15.2	36.5	7.8	45.8
2005	567	75.3	61.7	57.5	28.4	27.5	13.9	41.4	6.7	48.1
2006	475	70.3	55.8	52.2	36.4	14.1	15.6	33.1		
2007	506	71.5	59.9	51.0	32.2	18.2				
2008	451	71.6	58.1	52.7						
2009	437	74.4	61.6							
2010	386	75.9								

Source: MHEC Enrollment and Degree Information Systems

Trends in Retention and Graduation Rates
COPPIN STATE UNIVERSITY
 Female Students

Percent enrolled at original campus or graduated from **any** campus after:

Cohort	N	One Year	Two Years	Three Years	Four Years		Five Years		Six Years	
					Enrolled	Graduated	Enrolled	Graduated	Enrolled	Graduated
1989	129	68.2	50.4	46.5	37.2	3.1	21.7	14.0	16.3	21.7
1990	189	71.4	56.1	47.6	37.6	5.3	18.5	18.5	13.2	27.0
1991	195	74.4	63.1	57.9	40.5	11.8	19.0	25.1	10.3	34.8
1992	182	82.4	63.7	52.1	39.6	8.7	19.2	21.9	12.1	30.2
1993	264	73.9	53.0	43.9	33.3	7.6	17.8	19.0	9.8	26.1
1994	255	69.8	53.3	46.7	35.3	6.3	18.0	17.6	10.6	28.6
1995	303	73.6	54.5	47.2	32.7	7.6	19.5	19.8	8.9	27.7
1996	357	72.8	57.7	50.4	40.6	6.2	22.7	19.3	11.5	30.8
1997	268	73.1	56.0	48.9	38.4	5.2	18.7	20.5	9.3	28.0
1998	337	73.0	55.2	46.9	33.2	6.8	18.4	20.8	9.2	28.8
1999	306	71.2	52.3	43.8	28.1	9.5	13.7	21.2	8.8	27.1
2000	289	73.7	52.9	42.5	31.1	5.9	16.6	16.6	8.0	24.2
2001	384	70.8	47.4	41.7	24.5	9.1	13.5	20.3	7.0	25.0
2002	430	68.4	50.2	39.5	27.0	7.0	13.3	16.5	6.7	20.2
2003	432	65.0	48.3	38.7	26.4	4.6	12.0	12.3	9.7	16.7
2004	451	63.4	43.9	37.0	26.8	5.1	14.9	12.0	8.6	19.1
2005	522	65.3	41.0	34.5	23.0	4.8	11.3	14.6	6.7	19.0
2006	399	58.9	45.6	38.1	25.1	6.3	14.3	15.3		
2007	430	58.8	36.7	33.0	24.7	3.7				
2008	451	62.3	44.6	37.9						
2009	407	62.9	46.4							
2010	366	65.0								

Source: MHEC Enrollment and Degree Information Systems

Trends in Retention and Graduation Rates
FROSTBURG STATE UNIVERSITY
 Female Students

Percent enrolled at original campus or graduated from **any** campus after:

Cohort	N	One Year	Two Years	Three Years	Four Years		Five Years		Six Years	
					Enrolled	Graduated	Enrolled	Graduated	Enrolled	Graduated
1989	430	77.4	64.9	59.3	23.5	35.8	3.7	60.4	1.4	67.6
1990	428	79.2	65.4	61.9	27.1	33.8	4.2	61.7	3.3	69.6
1991	380	76.6	67.4	63.2	25.3	33.7	4.2	61.3	0.8	67.6
1992	453	80.4	65.3	61.2	22.1	38.2	2.0	65.6	0.4	70.2
1993	434	70.7	62.2	57.1	26.5	27.2	5.5	54.6	1.4	62.4
1994	426	73.5	63.8	57.8	27.2	31.0	4.5	59.4	1.6	65.5
1995	437	74.4	62.5	57.7	25.4	31.3	6.6	57.2	1.6	65.9
1996	483	74.5	61.2	56.9	28.6	28.8	4.1	59.6	1.2	63.8
1997	446	78.7	66.2	61.6	24.9	34.6	3.8	62.8	1.3	67.9
1998	489	76.5	61.8	56.8	29.9	25.5	3.5	55.6	1.2	62.8
1999	512	76.2	62.5	58.2	31.1	24.2	3.9	55.8	1.2	62.3
2000	500	73.4	63.2	61.1	27.2	29.2	4.8	57.4	1.0	64.2
2001	474	77.6	66.0	61.6	26.2	31.0	3.0	58.4	1.1	64.1
2002	494	75.1	65.0	59.9	22.9	34.2	4.0	60.5	1.4	66.2
2003	452	78.1	63.7	60.1	25.0	31.4	4.2	60.8	0.7	66.8
2004	429	73.7	62.0	58.5	25.4	32.4	4.0	58.0	2.1	61.5
2005	448	77.5	62.5	59.6	27.9	28.6	5.4	54.5	1.6	60.5
2006	461	73.5	61.8	57.3	26.9	26.2	3.9	54.7		
2007	520	75.6	61.7	55.8	25.2	28.7				
2008	478	75.7	61.3	57.5						
2009	507	78.9	67.7							
2010	472	73.3								

Source: MHEC Enrollment and Degree Information Systems

Trends in Retention and Graduation Rates
SALISBURY UNIVERSITY
 Female Students

Percent enrolled at original campus or graduated from **any** campus after:

Cohort	N	One Year	Two Years	Three Years	Four Years		Five Years		Six Years	
					Enrolled	Graduated	Enrolled	Graduated	Enrolled	Graduated
1989	432	84.3	69.7	66.6	20.8	47.9	3.9	66.9	2.5	71.3
1990	365	78.4	69.9	66.0	14.5	50.7	3.6	65.0	1.9	69.0
1991	387	80.9	69.3	67.7	15.2	52.4	1.6	66.9	0.8	70.3
1992	372	82.3	72.8	67.2	14.8	52.2	1.9	69.9	1.9	71.2
1993	405	80.5	70.1	66.7	14.8	53.1	1.5	69.1	0.7	72.1
1994	397	78.8	68.5	66.5	13.4	56.4	2.0	69.5	0.8	72.6
1995	412	83.7	76.9	73.0	16.5	56.8	2.7	71.8	1.5	75.5
1996	421	85.0	76.3	70.8	14.3	54.6	2.6	71.7	1.2	74.1
1997	516	84.1	75.7	74.0	16.1	57.9	2.7	76.9	1.9	78.7
1998	534	83.9	76.4	72.8	15.5	57.3	1.1	74.8	0.6	77.6
1999	538	82.9	77.7	73.6	14.7	59.5	2.2	73.4	0.6	75.6
2000	546	83.9	77.8	74.0	13.6	63.2	1.5	77.8	0.5	80.0
2001	542	84.3	76.6	76.0	17.7	56.8	2.4	76.5	0.4	80.3
2002	529	83.7	78.7	77.3	18.3	58.0	2.3	77.7	0.6	81.7
2003	532	82.5	74.6	75.2	16.2	57.3	2.3	74.8	0.9	78.0
2004	537	84.9	77.1	73.7	14.9	61.3	1.9	77.8	0.4	80.8
2005	525	83.6	76.2	75.6	14.7	59.4	3.2	73.9	0.8	77.1
2006	588	83.3	76.7	74.8	15.5	58.7	3.2	73.5		
2007	647	83.5	76.2	73.1	15.2	59.2				
2008	695	84.7	77.6	74.2						
2009	741	84.3	79.1							
2010	773	84.5								

Source: MHEC Enrollment and Degree Information Systems

Trends in Retention and Graduation Rates
TOWSON UNIVERSITY
 Female Students

Percent enrolled at original campus or graduated from **any** campus after:

Cohort	N	One Year	Two Years	Three Years	Four Years		Five Years		Six Years	
					Enrolled	Graduated	Enrolled	Graduated	Enrolled	Graduated
1989	828	84.1	76.8	73.3	33.3	35.9	6.5	65.2	2.4	71.3
1990	828	83.9	76.4	72.3	37.6	31.3	8.6	61.3	3.3	69.6
1991	734	83.4	72.8	69.7	31.9	33.2	8.3	60.1	3.5	66.7
1992	823	81.9	73.3	69.4	33.3	33.5	8.6	60.4	3.4	67.2
1993	720	81.5	72.5	69.2	32.1	34.5	7.5	61.5	2.6	67.9
1994	810	82.7	71.5	67.7	32.6	32.7	8.6	58.9	3.6	64.0
1995	934	83.2	75.1	72.7	31.2	38.3	6.6	64.4	2.2	69.5
1996	1,131	83.5	73.9	71.4	31.4	35.2	5.7	62.0	2.6	66.4
1997	1,080	83.1	73.9	71.4	28.4	37.0	7.9	59.8	3.1	64.7
1998	1,180	84.8	76.3	72.5	34.6	34.9	8.1	62.4	3.0	69.3
1999	1,284	83.2	73.4	71.2	31.3	36.4	8.6	60.0	3.0	66.0
2000	1,201	83.5	76.7	72.8	31.4	37.2	6.8	62.9	1.7	68.9
2001	1,247	84.2	77.2	74.7	30.2	41.1	5.8	66.3	2.0	71.5
2002	1,388	84.4	75.5	73.3	27.0	44.3	5.5	69.2	2.4	73.8
2003	1,190	85.3	80.5	78.1	25.9	50.2	3.9	73.4	1.3	77.9
2004	1,377	82.9	77.1	73.9	29.6	43.4	5.6	69.4	2.2	75.0
2005	1,459	79.9	74.8	71.6	26.4	44.5	6.3	66.9	3.2	71.1
2006	1,698	81.4	75.0	71.6	26.5	43.9	6.2	66.0		
2007	1,673	81.1	73.5	71.2	25.0	45.3				
2008	1,788	83.4	76.6	73.5						
2009	1,565	85.2	78.9							
2010	1,593	84.0								

Source: MHEC Enrollment and Degree Information Systems

Trends in Retention and Graduation Rates
UNIVERSITY OF MARYLAND BALTIMORE COUNTY
 Female Students

Percent enrolled at original campus or graduated from **any** campus after:

Cohort	N	One Year	Two Years	Three Years	Four Years		Five Years		Six Years	
					Enrolled	Graduated	Enrolled	Graduated	Enrolled	Graduated
1989	481	79.8	63.0	55.9	28.3	25.6	7.7	53.8	4.6	59.9
1990	543	81.2	65.6	54.9	30.4	23.0	9.8	50.3	2.8	60.8
1991	469	84.0	67.0	53.5	27.3	27.5	6.4	50.6	2.6	59.3
1992	434	81.1	69.4	62.0	30.2	29.3	6.9	56.8	2.8	63.6
1993	417	83.2	71.0	61.9	28.1	28.7	7.4	56.6	2.4	66.2
1994	370	83.0	66.5	60.2	29.5	30.8	8.4	54.9	2.7	63.5
1995	475	84.2	69.7	64.4	24.0	37.3	7.2	56.4	3.4	63.3
1996	505	82.4	69.1	63.2	24.8	34.3	5.1	56.9	2.4	62.7
1997	608	84.4	72.0	64.0	27.0	35.2	7.4	57.1	3.0	65.4
1998	609	83.7	69.8	64.0	28.2	35.7	7.1	59.5	2.5	68.2
1999	638	84.8	75.2	69.2	30.1	35.1	6.9	62.4	2.5	70.0
2000	601	82.9	70.4	66.6	26.1	39.6	6.5	63.7	1.3	71.7
2001	603	84.7	74.6	69.7	25.0	43.0	6.0	63.4	2.2	70.6
2002	573	84.3	71.7	66.3	24.1	42.5	5.8	65.3	1.6	73.8
2003	658	84.3	74.5	70.0	22.8	46.8	5.0	69.3	1.5	76.4
2004	560	84.6	73.2	68.9	25.7	43.2	6.1	69.3	2.5	74.3
2005	584	84.9	71.2	65.8	23.5	42.1	6.0	64.4	3.1	70.2
2006	627	86.6	74.6	71.0	22.2	49.1	4.0	69.5		
2007	656	88.3	77.4	73.6	25.5	44.4				
2008	650	88.5	75.2	73.2						
2009	657	87.1	77.9							
2010	605	84.1								

Source: MHEC Enrollment and Degree Information Systems

Trends in Retention and Graduation Rates
UNIVERSITY OF MARYLAND, COLLEGE PARK
 Female Students

Percent enrolled at original campus or graduated from **any** campus after:

Cohort	N	One Year	Two Years	Three Years	Four Years		Five Years		Six Years	
					Enrolled	Graduated	Enrolled	Graduated	Enrolled	Graduated
1989	1,507	88.5	79.2	75.0	34.8	34.1	8.1	65.2	3.8	72.1
1990	1,481	87.2	76.3	71.2	32.2	33.6	8.8	59.8	3.8	67.8
1991	1,436	83.5	74.7	72.1	32.6	34.9	6.9	62.8	1.9	69.0
1992	1,531	85.0	75.2	72.2	32.8	35.0	6.5	62.4	2.4	68.4
1993	1,542	86.6	75.2	72.9	32.0	35.3	6.8	62.2	2.7	68.7
1994	1,773	86.8	75.8	72.7	30.1	37.2	5.8	62.7	1.9	69.1
1995	1,783	87.4	76.1	73.4	27.1	41.1	6.7	63.7	2.7	69.9
1996	1,730	87.4	80.9	77.1	25.5	46.0	5.5	68.1	1.8	73.9
1997	1,877	89.7	80.8	79.6	27.1	47.8	5.4	71.7	2.0	76.6
1998	2,016	90.0	81.2	79.9	27.3	48.5	6.2	71.9	1.8	77.0
1999	1,804	91.6	84.0	82.6	23.1	55.1	4.1	75.8	1.7	80.0
2000	1,903	92.4	85.5	84.7	20.6	58.9	3.1	81.2	1.1	84.3
2001	2,069	92.7	84.3	83.2	17.2	62.7	2.3	80.5	0.8	83.0
2002	1,965	92.6	85.0	84.8	17.0	64.0	2.4	81.4	0.8	84.1
2003	2,036	92.4	84.4	84.9	16.5	65.2	2.7	81.7	1.3	85.2
2004	2,055	93.9	86.8	85.1	15.8	67.3	2.7	83.5	0.9	86.3
2005	2,084	92.3	86.4	85.3	13.7	68.5	1.8	84.5	0.8	85.9
2006	1,897	93.2	86.9	86.7	16.6	66.0	2.6	82.7		
2007	2,027	94.7	87.8	87.8	14.9	70.1				
2008	1,824	93.6	88.5	86.8						
2009	1,954	95.6	89.6							
2010	1,856	94.5								

Source: MHEC Enrollment and Degree Information Systems

Trends in Retention and Graduation Rates
UNIVERSITY OF MARYLAND EASTERN SHORE
 Female Students

Percent enrolled at original campus or graduated from **any** campus after:

Cohort	N	One Year	Two Years	Three Years	Four Years		Five Years		Six Years	
					Enrolled	Graduated	Enrolled	Graduated	Enrolled	Graduated
1989	263	64.6	48.7	41.1	19.0	15.6	4.6	34.6	1.1	39.9
1990	245	68.6	47.8	42.9	21.2	18.7	6.1	31.9	1.2	39.6
1991	308	72.4	57.1	49.4	20.1	20.1	3.2	38.7	1.3	43.2
1992	243	74.1	51.0	40.7	16.9	18.1	2.9	39.5	2.5	44.5
1993	303	74.9	53.5	45.5	17.5	24.4	3.3	40.6	0.3	44.2
1994	384	71.9	53.4	48.0	17.2	28.1	3.9	46.6	1.8	52.6
1995	488	74.1	56.9	47.4	17.2	29.5	4.7	46.6	1.3	52.2
1996	455	76.3	61.1	49.2	18.2	31.0	2.9	47.5	0.4	53.4
1997	394	75.4	54.6	51.0	16.0	34.8	2.8	49.7	0.5	55.5
1998	385	69.1	55.3	49.9	18.4	29.1	3.4	46.3	1.0	51.2
1999	307	74.3	57.3	54.1	18.6	32.6	4.6	47.9	1.3	52.1
2000	494	67.4	55.5	48.0	19.4	24.7	7.1	39.7	2.2	46.3
2001	741	71.6	58.9	48.7	16.7	28.2	5.1	43.3	1.9	49.3
2002	554	68.4	49.0	44.0	14.1	27.8	2.9	43.9	0.7	48.7
2003	570	67.4	50.6	44.9	18.9	23.3	4.9	37.9	2.5	42.3
2004	558	68.5	50.6	43.5	15.6	24.9	5.4	36.7	2.3	41.9
2005	618	66.3	46.6	41.3	19.3	21.0	5.7	36.2	2.3	41.4
2006	718	63.1	43.5	40.0	20.9	17.0	4.3	34.1		
2007	559	67.3	49.9	46.5	24.1	19.5				
2008	658	70.7	52.6	49.3						
2009	525	64.0	49.3							
2010	565	69.4								

Source: MHEC Enrollment and Degree Information Systems

Trends in Retention and Graduation Rates
MORGAN STATE UNIVERSITY
 Female Students

Percent enrolled at original campus or graduated from **any** campus after:

Cohort	N	One Year	Two Years	Three Years	Four Years		Five Years		Six Years	
					Enrolled	Graduated	Enrolled	Graduated	Enrolled	Graduated
1989	476	73.7	56.9	51.5	29.4	17.2	9.5	34.9	5.9	40.2
1990	434	70.7	57.1	51.4	29.3	15.0	13.4	32.1	7.8	39.4
1991	631	73.5	61.8	55.3	32.6	18.8	12.8	35.6	6.8	41.0
1992	661	75.3	61.0	55.7	31.3	21.8	10.1	40.7	3.6	46.9
1993	653	78.6	64.2	58.9	33.7	20.7	13.2	40.7	5.1	47.1
1994	584	78.4	65.1	56.5	30.7	21.7	11.1	39.7	4.3	46.7
1995	650	78.2	61.7	56.3	26.6	23.9	10.0	39.8	4.3	46.4
1996	603	73.5	63.2	57.6	26.5	24.0	10.1	42.3	4.5	47.6
1997	657	75.5	62.3	56.7	27.1	24.5	9.9	41.9	4.0	49.7
1998	695	74.8	60.9	57.0	31.9	18.7	10.1	39.3	5.0	47.5
1999	666	75.2	66.7	60.8	29.3	25.3	11.1	44.4	5.0	50.7
2000	694	73.1	56.9	52.2	27.2	21.6	11.0	37.3	6.5	44.4
2001	667	69.4	58.0	54.1	30.6	20.5	11.4	38.3	5.7	46.0
2002	743	68.9	55.7	52.6	32.7	15.8	13.1	33.5	5.0	40.8
2003	700	70.0	58.0	51.1	31.1	15.3	13.7	31.6	6.0	39.6
2004	747	69.6	53.6	47.8	30.1	16.7	11.0	32.1	5.2	39.8
2005	396	66.4	53.5	48.2	26.5	17.7	11.9	32.1	5.6	37.3
2006	773	64.3	50.6	47.3	27.3	15.8	11.6	30.1		
2007	704	68.5	57.5	53.8	34.7	14.6				
2008	808	70.8	56.1	49.5						
2009	717	68.2	55.5							
2010	680	72.8								

Source: MHEC Enrollment and Degree Information Systems

Trends in Retention and Graduation Rates
ST. MARY'S COLLEGE OF MARYLAND
 Female Students

Percent enrolled at original campus or graduated from **any** campus after:

Cohort	N	One Year	Two Years	Three Years	Four Years		Five Years		Six Years	
					Enrolled	Graduated	Enrolled	Graduated	Enrolled	Graduated
1989	122	89.3	73.8	72.1	8.2	66.4	2.5	77.8	0.8	79.5
1990	111	88.3	79.3	80.2	10.8	70.3	1.8	80.2	0.0	82.9
1991	132	90.9	82.6	79.6	6.1	74.3	0.0	84.1	0.8	84.8
1992	133	85.7	74.4	73.0	15.0	58.6	0.8	78.2	0.0	79.7
1993	153	93.5	74.5	75.2	8.5	65.4	0.7	76.5	0.7	78.4
1994	184	84.8	68.5	70.6	8.2	63.0	1.1	74.5	0.0	75.6
1995	201	86.6	78.1	75.1	10.4	63.7	2.0	74.6	1.0	75.6
1996	183	88.5	81.4	79.8	4.4	72.1	0.5	82.5	0.5	82.5
1997	196	86.2	80.1	79.1	6.6	76.5	1.5	85.2	0.0	86.2
1998	182	87.9	82.4	81.8	5.5	75.8	0.0	84.0	0.5	86.2
1999	158	81.6	77.2	77.2	9.5	70.3	1.3	79.1	1.3	81.0
2000	220	87.3	84.1	83.7	4.5	79.1	0.9	85.9	0.0	87.3
2001	294	89.1	84.0	83.9	4.1	81.3	0.3	86.0	0.0	86.7
2002	243	85.6	79.0	77.7	3.7	74.1	0.4	81.5	0.0	82.7
2003	250	90.0	85.2	81.2	2.4	82.4	0.8	88.4	0.0	89.6
2004	233	91.0	85.8	83.7	4.3	79.4	0.9	85.0	0.0	86.3
2005	295	84.7	81.4	80.0	6.1	73.2	1.0	79.3	0.0	81.4
2006	249	90.8	84.3	83.5	5.6	79.5	0.4	83.1		
2007	256	89.8	84.0	82.8	3.9	76.2				
2008	278	90.6	84.9	81.7						
2009	274	89.4	84.7							
2010	277	86.6								

Source: MHEC Enrollment and Degree Information Systems

Trends in Retention and Graduation Rates
University of Baltimore
 Female Students

Percent enrolled at original campus or graduated from **any** campus after:

Cohort	N	One Year	Two Years	Three Years	Four Years		Five Years		Six Years	
					Enrolled	Graduated	Enrolled	Graduated	Enrolled	Graduated
2007	76	67.1	53.9	52.6	26.3	19.7				
2008	77	75.3	55.8	42.9						
2009	97	76.3	51.6							
2010	82	78.0								

Source: MHEC Enrollment and Degree Information Systems

**RETENTION AND GRADUATION RATES OF
MARYLAND RESIDENTS AT
STATE-AIDED INDEPENDENT INSTITUTIONS**

Trends in Retention and Graduation Rates of Maryland Residents

Maryland State-Aided Independent Colleges and Universities

Percent enrolled at or graduated from original campus after:

	Cohort	N	One Year	Two Years	Three Years	Four Years		Five Years		Six Years	
						Enrolled	Graduated	Enrolled	Graduated	Enrolled	Graduated
Baltimore Int'l Coll	2005	119	52.9	14.3	10.1	3.4	4.2	0.8	5.9	0.0	5.9
	2006	90	54.4	16.7	7.8	3.3	3.3	1.1	3.3		
	2007	149	42.6	12.8	5.4	0.7	4.1				
	2008	86	45.3	8.1	3.5						
	2009	142	30.3	4.9							
	2010	102	21.6								
Capitol	2005	51	64.7	45.1	37.3	30.0	5.9	7.8	23.5	2.0	29.4
	2006	45	57.8	42.2	30.0	17.8	13.3	6.7	20.0		
	2007	37	62.2	56.8	43.2	13.5	21.6				
	2008	27	81.5	63.0	66.7						
	2009	46	69.6	54.3							
	2010	41	68.3								
Washington Adventist	2005	66	65.2	43.9	36.4	16.7	13.6	6.1	30.3	4.5	33.3
	2006	72	54.2	34.7	36.1	28.4	5.6	13.9	19.4		
	2007	63	34.9	49.2	49.2	34.9	15.9				
	2008	52	61.5	46.2	34.6						
	2009	60	71.7	53.3							
	2010	68	30.9								
Goucher	2005	79	77.2	68.4	67.1	30.0	58.2	0.0	65.8	0.0	67.1
	2006	105	81.0	74.3	75.2	12.9	48.1	1.9	65.7		
	2007	93	81.7	72.0	67.7	8.6	52.7				
	2008	86	77.9	66.3	62.8						
	2009	94	78.7	73.4							
	2010	76	81.6								
Hood	2005	160	80.0	69.4	69.4	6.9	61.3	0.0	68.1	0.0	68.8
	2006	210	74.3	66.7	61.4	12.9	48.1	1.4	59.0		
	2007	211	80.1	70.6	68.7	10.9	55.9				
	2008	214	80.8	68.7	67.3						
	2009	187	75.9	67.4							
	2010	228	77.2								
Johns Hopkins	2005	181	90.1	78.5	85.1	30.0	72.9	1.7	82.9	0.6	83.4
	2006	175	93.1	88.6	90.3	9.1	75.4	2.3	83.4		
	2007	165	81.2	75.2	75.2	5.5	69.7				
	2008	165	96.4	89.7	90.9						
	2009	144	93.8	89.6							
	2010	139	95.0								
Loyola	2005	148	87.8	79.7	79.1	6.1	71.6	0.7	77.0	0.0	77.7
	2006	161	89.4	81.4	82.0	4.3	74.5	1.2	80.1		
	2007	173	89.6	82.7	80.3	7.5	71.7				
	2008	184	88.0	83.2	82.1						
	2009	150	86.7	84.0							
	2010	170	87.6								
MD Inst Coll of Art	2005	69	81.2	72.5	72.5	30.0	62.3	1.5	69.6	1.4	69.6
	2006	66	89.4	84.8	81.8	7.6	60.6	4.5	69.7		
	2007	76	85.5	72.4	65.8	7.9	52.6				
	2008	66	89.4	84.8	77.3						
	2009	75	92.0	84.0							
	2010	99	84.8								
McDaniel	2005	315	85.7	76.2	76.2	3.2	68.9	0.6	73.3	0.3	73.7
	2006	308	83.8	75.3	72.7	5.2	64.3	1.0	71.1		
	2007	272	86.4	78.3	77.6	7.4	66.2				
	2008	237	78.9	64.6	66.7						
	2009	253	84.6	76.7							
	2010	369	51.5								
Mt. St. Mary's	2005	249	82.3	76.7	73.5	2.4	67.5	0.0	71.1	0.4	71.9
	2006	235	80.4	71.9	70.2	3.0	44.4	0.0	68.9		
	2007	231	80.5	71.0	64.9	3.9	61.0				
	2008	222	74.3	63.5	62.2						
	2009	254	77.2	68.9							
	2010	201	83.6								
Coll Notre Dame MD	2005	128	67.2	52.3	45.3	30.0	37.5	2.3	40.6	0.0	43.0
	2006	99	73.7	58.6	52.5	3.0	44.4	3.0	46.5		
	2007	84	76.2	64.3	56.0	9.5	46.4				
	2008	85	78.8	64.7	57.6						
	2009	87	75.9	63.2							
	2010	95	69.5								
St. Johns	2005	24	79.2	54.2	58.3	4.2	45.8	0.0	58.3	0.0	58.3
	2006	27	77.8	51.9	56.6	11.1	44.4	0.0	55.6		
	2007	28	71.4	46.4	46.4	7.1	39.3				
	2008	16	93.8	75.0	81.2						
	2009	14	*	*							
	2010	23	82.6								
Sojourner-Douglas	2005	40	32.5	20.0	27.5	30.0	15.0	5.0	15.0	5.0	17.5
	2006	51	56.9	19.6	19.6	13.7	9.8	5.9	17.6		
	2007	99	45.5	25.3	16.2	12.1	7.1				
	2008	67	52.2	46.3	29.9						
	2009	104	54.8	35.6							
	2010	120	43.3								
Stevenson (formerly Villa Julie)	2005	509	81.1	70.3	67.4	18.1	45.2	3.5	59.9	1.2	62.9
	2006	608	82.7	71.7	68.3	14.6	47.7	3.6	61.2		
	2007	549	74.5	65.8	61.7	14.9	43.0				
	2008	561	78.6	67.7	65.1						
	2009	440	75.9	63.9							
	2010	743	73.9								
Washington	2005	152	84.9	75.0	72.4	30.0	69.7	1.3	72.4	0.0	73.0
	2006	157	80.9	71.3	69.4	3.2	65.6	0.6	68.8		
	2007	173	83.2	75.1	73.4	4.6	65.9				
	2008	192	82.8	75.5	70.3						
	2009	187	84.5	78.1							
	2010	225	81.8								
All State-Aided Independents	2005	2,290	79.1	67.0	65.5	8.5	53.6	1.8	61.4	0.7	62.8
	2006	2,409	79.7	68.5	66.2	9.3	52.8	2.5	61.1		
	2007	2,402	75.4	65.1	61.6	9.5	49.9				
	2008	2,260	78.8	67.5	64.9						
	2009	2,237	76.2	66.0							
	2010	2,699	70.5								

* N less than 15

Source: MHEC Enrollment and Degree Information Systems

Trends in Retention and Graduation Rates of Maryland Residents

Maryland State-Aided Independent Colleges and Universities
Male Students

Percent enrolled at or graduated from original campus after:

	Cohort	N	Percent enrolled at or graduated from original campus after:								
			One Year	Two Years	Three Years	Four Years		Five Years		Six Years	
						Enrolled	Graduated	Enrolled	Graduated	Enrolled	Graduated
Baltimore Intl Coll	2005	56	57.1	21.4	12.5	3.6	3.6	1.6	5.4	0.0	5.4
	2006	43	58.1	20.9	7.0	4.7	0.0	2.3	0.0		
	2007	81	40.7	11.1	2.5	0.0	1.2				
	2008	43	41.9	11.6	7.0						
	2009	61	31.1	3.3							
2010	52	23.1									
Capitol	2005	43	62.8	46.5	37.2	30.0	7.0	7.0	22.3	2.3	27.9
	2006	32	56.3	40.6	40.6	18.8	12.5	9.4	18.8		
	2007	27	59.3	51.9	40.7	14.8	22.2				
	2008	19	73.7	73.7	68.4						
	2009	32	71.9	53.1							
2010	32	65.6									
Washington Adventist	2005	19	78.9	52.6	47.4	21.1	15.8	10.5	31.6	0.0	36.8
	2006	30	53.3	23.3	33.3	23.3	3.3	13.3	13.3		
	2007	22	45.5	40.9	36.4	36.4	4.5				
	2008	17	76.5	74.6	41.2						
	2009	23	65.2	34.8							
2010	18	16.7									
Goucher	2005	28	82.1	67.9	64.3	30.0	53.6	0.0	60.7	0.0	64.3
	2006	41	78.0	70.7	68.3	9.8	46.3	4.9	58.5		
	2007	37	86.5	78.4	67.6	13.5	43.2				
	2008	37	86.5	70.3	64.9						
	2009	36	69.4	72.2							
2010	27	77.8									
Hood	2005	44	45.0	61.4	61.4	2.3	56.8	0.0	61.4	0.0	61.4
	2006	65	66.2	60.0	55.4	12.3	41.5	1.5	52.3		
	2007	65	75.4	64.6	64.6	20.0	43.1				
	2008	73	75.5	68.5	65.8						
	2009	59	74.6	62.7							
2010	85	69.4									
Johns Hopkins	2005	81	87.7	79.0	79.0	30.0	61.7	2.5	77.8	1.2	77.8
	2006	93	94.6	89.2	88.2	10.8	73.1	2.2	81.7		
	2007	75	77.3	73.3	72.0	8.0	64.0				
	2008	92	94.6	89.1	89.1						
	2009	71	88.7	87.3							
2010	67	95.5									
Loyola	2005	65	92.3	83.1	81.5	6.2	73.8	0.0	80.0	0.0	80.0
	2006	70	92.9	82.9	82.9	4.3	72.9	0.0	81.4		
	2007	81	90.1	79.0	75.3	13.6	59.3				
	2008	77	87.0	79.2	79.2						
	2009	75	82.7	81.3							
2010	64	89.1									
MD Inst Coll of Art	2005	24	83.3	75.0	79.2	30.0	66.7	4.2	70.8	4.2	70.8
	2006	11	-	-	-	-	-	-	-	-	-
	2007	23	82.6	69.6	60.9	8.7	47.8				
	2008	19	94.7	100.0	89.5						
	2009	27	92.6	85.2							
2010	30	83.3									
McDaniel	2005	133	82.0	70.7	70.7	30.0	63.2	1.5	67.7	0.8	68.4
	2006	130	76.9	68.5	66.2	7.7	53.1	0.8	64.6		
	2007	125	83.2	74.4	77.6	11.2	56.0				
	2008	110	77.3	68.2	70.9						
	2009	127	83.5	74.8							
2010	173	47.4									
Mt. St. Mary's	2005	98	84.7	81.6	77.6	1.0	71.4	0.0	74.5	1.0	74.5
	2006	96	7.2	70.8	69.8	6.3	61.5	0.0	67.7		
	2007	93	74.2	65.6	61.3	3.2	58.1				
	2008	106	74.5	65.1	63.2						
	2009	101	75.2	67.3							
2010	82	80.5									
Coll Notre Dame MD	2005	0	*	*	*	*	*	*	*	*	*
	2006	0	*	*	*	*	*	*	*	*	*
	2007	0	*	*	*	*	*	*	*	*	*
	2008	0	*	*	*	*	*	*	*	*	*
	2009	0	*	*	*	*	*	*	*	*	*
2010	0	*	*	*	*	*	*	*	*	*	*
St. Johns	2005	14	*	*	*	*	*	*	*	*	*
	2006	17	82.4	52.9	58.8	11.8	47.1	0.0	58.8		
	2007	17	76.5	41.2	35.3	5.9	35.3				
	2008	10	*	*	*						
	2009	5	*	*	*						
2010	18	77.8									
Sojourner-Douglas	2005	11	*	*	*	*	*	*	*	*	*
	2006	10	*	*	*	*	*	*	*	*	*
	2007	7	*	*	*	*	*	*	*	*	*
	2008	8	*	*	*	*	*	*	*	*	*
	2009	15	*	*	*	*	*	*	*	*	*
2010	16	50.0									
Stevenson (formerly Villa Julie)	2005	152	82.2	65.8	63.2	30.0	38.8	3.9	54.6	0.7	57.9
	2006	179	86.0	72.1	65.4	14.5	44.1	3.4	57.0		
	2007	145	72.4	66.2	62.1	17.2	37.9				
	2008	158	75.3	63.9	62.0						
	2009	131	71.8	58.8							
2010	271	70.1									
Washington	2005	63	82.5	71.4	68.3	4.8	60.3	1.6	65.1	0.0	66.7
	2006	71	80.3	74.6	70.4	4.2	64.8	1.4	69.0		
	2007	58	79.3	67.2	69.0	10.3	53.4				
	2008	59	79.7	74.6	69.5						
	2009	79	84.8	75.9							
2010	89	76.4									
All State-Aided Independents	2005	831	79.9	66.5	63.8	9.5	50.4	2.2	59.0	0.7	60.3
	2006	888	79.1	67.1	64.1	10.1	49.2	2.8	58.4		
	2007	856	73.6	62.5	59.2	11.4	43.8				
	2008	828	75.5	68.5	66.5						
	2009	842	75.2	65.1							
2010	1,024	67.4									

* N less than 15

Source: MHEC Enrollment and Degree Information Systems

Trends in Retention and Graduation Rates of Maryland Residents

Maryland State-Aided Independent Colleges and Universities
Female Students

Percent enrolled at or graduated from original campus after:

	Cohort	N	Percent enrolled at or graduated from original campus after:								
			One Year	Two Years	Three Years	Four Years		Five Years		Six Years	
						Enrolled	Graduated	Enrolled	Graduated	Enrolled	Graduated
Baltimore Intl Coll	2005	63	49.2	7.9	7.9	3.2	4.8	0.0	6.3	0.0	6.3
	2006	47	51.1	12.8	8.5	2.1	6.4	0.0	6.4		
	2007	67	44.8	14.9	9.0	1.5	7.5				
	2008	43	48.8	4.7	0.0						
	2009	81	29.6	6.2							
2010	50	20.0									
Capitol	2005	8	*	*	*	*	*	*	*	*	*
	2006	13	*	*	*	*	*	*	*	*	*
	2007	10	*	*	*	*	*	*	*	*	*
	2008	8	*	*	*	*	*	*	*	*	*
	2009	14	*	*	*	*	*	*	*	*	*
2010	9	*	*	*	*	*	*	*	*	*	
Washington Adventist	2005	47	59.6	40.4	31.9	14.9	12.8	4.3	29.8	6.4	31.9
	2006	42	54.8	42.9	38.1	28.6	7.1	14.3	23.8		
	2007	41	29.6	53.7	56.1	34.1	22.0				
	2008	35	54.3	42.9	31.4						
	2009	37	75.7	64.9							
2010	50	36.0									
Goucher	2005	51	74.5	68.6	68.6	30.0	60.8	0.0	68.6	0.0	68.6
	2006	64	82.8	76.6	79.7	9.4	60.9	0.0	70.3		
	2007	56	78.6	67.9	67.9	5.4	58.9				
	2008	49	71.4	63.3	61.2						
	2009	58	84.5	74.1							
2010	49	83.7									
Hood	2005	116	81.9	72.4	72.4	8.6	62.9	0.0	70.7	0.0	71.6
	2006	145	77.9	69.7	64.1	13.1	51.0	1.4	62.1		
	2007	146	82.2	73.3	70.5	6.8	61.6				
	2008	141	81.6	68.8	68.1						
	2009	128	76.6	69.5							
2010	143	81.8									
Johns Hopkins	2005	100	92.0	78.0	90.0	30.0	82.0	1.0	87.0	0.0	88.0
	2006	82	91.5	87.8	92.7	7.3	78.0	2.4	85.4		
	2007	90	84.4	76.7	77.8	3.3	74.4				
	2008	73	98.6	90.4	93.2						
	2009	73	98.6	91.8							
2010	72	94.4									
Loyola	2005	83	84.3	77.1	77.1	6.0	69.9	1.2	74.7	0.0	75.9
	2006	91	86.8	80.2	81.3	4.4	75.8	2.2	79.1		
	2007	92	89.1	85.9	84.8	2.2	82.6				
	2008	107	88.8	86.0	84.1						
	2009	75	90.7	86.7							
2010	106	86.8									
MD Inst Coll of Art	2005	45	80.0	71.1	68.9	30.0	60.0	0.0	68.9	0.0	68.9
	2006	55	89.1	87.3	85.5	7.3	63.6	1.8	72.7		
	2007	53	86.8	73.6	67.9	7.5	54.7				
	2008	47	87.2	78.7	72.3						
	2009	48	91.7	83.3							
2010	69	85.5									
McDaniel	2005	182	88.5	80.2	80.2	2.2	73.1	0.0	77.5	0.0	77.5
	2006	178	88.8	80.3	77.5	3.4	72.5	1.1	75.8		
	2007	147	89.1	81.6	77.6	4.1	74.8				
	2008	127	80.3	61.4	63.0						
	2009	126	85.7	78.6							
2010	196	55.1									
Mt. St. Mary's	2005	151	80.8	73.5	70.9	3.3	64.9	0.0	68.9	0.0	70.2
	2006	139	81.3	72.7	70.5	0.7	69.1	0.0	69.8		
	2007	138	84.8	74.6	67.4	4.3	63.0				
	2008	116	74.1	62.1	61.2						
	2009	153	78.4	69.9							
2010	119	85.7									
Coll Notre Dame MD	2005	128	67.2	52.3	45.3	30.0	37.5	2.3	40.6	0.0	43.0
	2006	99	73.7	58.6	52.5	3.0	44.4	3.0	46.5		
	2007	84	76.2	64.3	56.0	9.5	46.4				
	2008	85	78.8	64.7	57.6						
	2009	87	75.9	63.2							
2010	95	69.5									
St. Johns	2005	10	*	*	*	*	*	*	*	*	*
	2006	10	*	*	*	*	*	*	*	*	*
	2007	11	*	*	*	*	*	*	*	*	*
	2008	6	*	*	*	*	*	*	*	*	*
	2009	9	*	*	*	*	*	*	*	*	*
2010	5	*	*	*	*	*	*	*	*	*	
Sojourner-Douglas	2005	29	31.0	17.2	31.0	6.9	13.8	6.9	13.8	6.9	17.2
	2006	41	61.0	19.5	19.5	12.2	9.8	2.4	17.1		
	2007	92	45.7	26.1	17.4	13.0	7.6				
	2008	59	54.2	45.8	28.8						
	2009	89	52.8	33.7							
2010	104	42.3									
Stevenson (formerly Villa Julie)	2005	357	80.7	72.3	69.2	17.1	47.9	3.4	62.2	1.4	65.0
	2006	429	81.4	71.6	69.5	14.7	49.2	3.7	62.9		
	2007	404	75.2	64.6	61.6	14.1	44.8				
	2008	403	79.9	69.2	66.3						
	2009	309	77.7	66.0							
2010	472	76.1									
Washington	2005	89	86.5	77.5	75.3	30.0	76.4	1.1	77.5	0.0	77.5
	2006	86	81.4	68.6	68.6	2.3	66.3	0.0	68.6		
	2007	115	85.2	79.1	75.7	1.7	72.2				
	2008	133	84.2	75.9	70.7						
	2009	108	84.3	79.6							
2010	136	85.3									
All State-Aided Independents	2005	1,459	78.7	67.3	66.4	7.9	55.4	1.6	62.9	0.7	64.3
	2006	1,521	80.1	69.3	67.4	8.9	54.8	2.3	62.6		
	2007	1,546	76.3	66.6	62.9	8.4	53.2				
	2008	1,432	79.1	67.0	64.0						
	2009	1,395	78.8	66.5							
2010	1,675	72.4									

* N less than 15

Source: MHEC Enrollment and Degree Information Systems

Trends in Retention and Graduation Rates of Maryland Residents

Maryland State-Aided Independent Colleges and Universities
African American Students

Percent enrolled at or graduated from original campus after:

	Cohort	N	Percent enrolled at or graduated from original campus after:								
			One Year	Two Years	Three Years	Four Years		Five Years		Six Years	
						Enrolled	Graduated	Enrolled	Graduated	Enrolled	Graduated
Baltimore Intl Coll	2005	77	49.4	16.9	11.7	5.2	3.9	1.3	6.5	0.0	6.5
	2006	49	51.0	14.3	6.1	4.1	2.0	0.0	2.0		
	2007	90	38.9	12.2	5.6	1.1	3.3				
	2008	45	44.4	8.9	4.4						
	2009	67	26.9	4.5							
2010	58	15.5									
Capitol	2005	30	60.0	43.3	36.7	30.0	0.0	10.0	16.7	0.0	26.7
	2006	26	50.0	38.5	38.5	23.1	7.7	7.7	11.5		
	2007	22	63.6	54.5	40.9	18.2	9.1				
	2008	12	*	*	*						
	2009	29	65.5	48.3							
2010	19	68.4									
Washington Adventist	2005	41	58.5	36.6	34.1	17.1	7.3	7.3	22.0	4.9	24.4
	2006	26	69.2	38.5	46.2	38.5	0.0	15.4	23.1		
	2007	26	26.9	50.0	46.2	38.5	3.8				
	2008	26	61.5	50.0	42.3						
	2009	36	77.8	55.6							
2010	25	28.0									
Goucher	2005	9	*	*	*	*	*	*	*	*	*
	2006	15	80.0	86.7	86.7	6.7	46.7	0.0	66.7		
	2007	18	77.8	66.7	66.7	16.7	33.3				
	2008	22	86.4	63.6	63.6						
	2009	18	83.3	83.3							
2010	18	77.8									
Hood	2005	25	72.0	60.0	64.0	50.0	56.0	0.0	64.0	0.0	64.0
	2006	25	76.0	72.0	68.0	20.0	44.0	0.0	52.0		
	2007	25	84.0	80.0	72.0	20.0	48.0				
	2008	33	90.9	87.6	60.6						
	2009	25	60.0	56.0							
2010	32	75.0									
Johns Hopkins	2005	20	95.0	95.0	90.0	15.0	70.0	5.0	80.0	0.0	85.0
	2006	27	92.6	88.9	88.9	14.8	63.0	0.0	77.8		
	2007	27	92.6	92.6	81.5	3.7	81.5				
	2008	23	95.7	91.3	87.0						
	2009	18	100.0	100.0							
2010	17	100.0									
Loyola	2005	12	*	*	*	*	*	*	*	*	*
	2006	16	87.5	75.0	81.3	0.0	75.0	0.0	81.2		
	2007	23	82.6	73.9	73.9	13.0	60.9				
	2008	23	91.3	91.3	91.3						
	2009	17	88.2	76.5							
2010	17	82.4									
MD Inst Coll of Art	2005	4	*	*	*	*	*	*	*	*	*
	2006	4	*	*	*	*	*	*	*	*	*
	2007	8	*	*	*	*	*	*	*	*	*
	2008	10	*	*	*	*	*	*	*	*	*
	2009	6	*	*	*	*	*	*	*	*	*
2010	7	*	*	*	*	*	*	*	*	*	
McDaniel	2005	22	86.4	72.7	68.2	9.1	63.6	0.0	72.7	0.0	72.7
	2006	20	80.0	70.0	70.0	15.0	50.0	0.0	65.0		
	2007	15	80.0	73.3	66.7	13.3	53.3				
	2008	22	63.6	50.0	50.0						
	2009	35	88.6	80.0							
2010	40	62.5									
Mt. St. Mary's	2005	27	77.8	77.8	66.7	3.7	59.3	0.0	63.0	0.0	66.7
	2006	25	72.0	60.0	56.0	8.0	40.0	0.0	48.0		
	2007	15	86.7	80.0	73.3	6.7	60.0				
	2008	27	59.3	51.9	51.9						
	2009	40	82.5	70.0							
2010	26	80.8									
Coll Notre Dame MD	2005	34	58.8	35.3	29.4	5.9	17.6	2.9	23.5	0.0	26.5
	2006	31	67.7	45.2	32.3	3.2	22.6	6.5	25.8		
	2007	22	68.2	54.5	50.0	4.5	36.4				
	2008	32	78.1	65.6	65.6						
	2009	30	66.7	50.0							
2010	35	74.3									
St. Johns	2005	1	*	*	*	*	*	*	*	*	*
	2006	1	*	*	*	*	*	*	*	*	*
	2007	1	*	*	*	*	*	*	*	*	*
	2008	0	*	*	*	*	*	*	*	*	*
	2009	0	*	*	*	*	*	*	*	*	*
2010	0	*	*	*	*	*	*	*	*	*	
Sojourner-Douglas	2005	39	30.8	17.9	25.6	5.1	12.8	5.1	12.8	5.1	15.4
	2006	49	55.1	18.4	18.4	12.2	10.2	6.1	16.3		
	2007	97	44.3	24.7	14.4	11.3	6.2				
	2008	65	52.3	46.2	29.2						
	2009	101	53.5	34.7							
2010	116	44.0									
Stevenson (formerly Villa Julie)	2005	83	80.7	62.7	61.4	30.0	30.1	3.6	50.6	2.4	53.0
	2006	66	86.4	66.7	63.6	24.2	22.7	13.6	39.4		
	2007	99	73.7	58.6	55.6	23.2	28.3				
	2008	87	75.9	58.6	54.0						
	2009	110	74.5	55.5							
2010	259	70.7									
Washington	2005	5	*	*	*	*	*	*	*	*	*
	2006	12	*	*	*	*	*	*	*	*	*
	2007	14	*	*	*	*	*	*	*	*	*
	2008	17	82.4	76.5	76.5						
	2009	11	*	*	*	*	*	*	*	*	*
2010	12	*	*	*	*	*	*	*	*	*	
All State-Aided Independents	2005	429	64.6	47.1	44.3	12.6	27.0	3.3	36.6	1.4	38.9
	2006	392	71.4	51.0	49.2	14.5	27.0	5.1	36.7		
	2007	502	61.8	48.4	42.0	12.9	26.1				
	2008	444	71.6	56.8	52.5						
	2009	543	66.7	50.6							
2010	681	61.4									

* N less than 15

Source: MHEC Enrollment and Degree Information Systems

Trends in Retention and Graduation Rates of Maryland Residents

Maryland State-Aided Independent Colleges and Universities
White Students

Percent enrolled at or graduated from original campus after:

	Cohort	N	Percent enrolled at or graduated from original campus after:								
			One Year	Two Years	Three Years	Four Years		Five Years		Six Years	
						Enrolled	Graduated	Enrolled	Graduated	Enrolled	Graduated
Baltimore Intl Coll	2005	38	60.5	10.5	7.9	0.0	5.3	0.0	5.3	0.0	5.3
	2006	33	57.6	15.2	6.1	3.0	3.0	3.0	3.0	0.0	5.3
	2007	43	53.5	18.6	7.0	0.0	7.0				
	2008	26	46.2	0.0	0.0						
	2009	48	33.3	4.2							
	2010	30	43.3								
Capitol	2005	13	*	*	*	*	*	*	*	*	*
	2006	12	*	*	*	*	*	*	*	*	*
	2007	9	*	*	*	*	*	*	*	*	*
	2008	9	*	*	*	*	*	*	*	*	*
	2009	10	*	*	*	*	*	*	*	*	*
	2010	12	*	*	*	*	*	*	*	*	*
Washington Adventist	2005	7	*	*	*	*	*	*	*	*	*
	2006	15	*	*	*	*	*	*	*	*	*
	2007	7	*	*	*	*	*	*	*	*	*
	2008	5	*	*	*	*	*	*	*	*	*
	2009	4	*	*	*	*	*	*	*	*	*
	2010	8	*	*	*	*	*	*	*	*	*
Goucher	2005	50	84.0	76.0	74.0	30.0	60.0	0.0	72.0	0.0	74.0
	2006	63	82.5	71.4	74.6	7.9	60.3	1.6	66.7		
	2007	59	83.1	71.2	66.1	6.8	57.6				
	2008	48	79.2	68.8	64.6						
	2009	53	77.4	71.7							
	2010	45	82.2								
Hood	2005	116	82.8	72.4	71.6	7.8	62.9	0.0	69.8	0.0	70.7
	2006	161	74.5	65.8	60.9	11.2	50.3	1.2	61.5		
	2007	155	79.4	68.4	68.4	9.0	57.4				
	2008	150	81.3	75.3	71.3						
	2009	125	80.8	70.4							
	2010	152	77.6								
Johns Hopkins	2005	111	87.4	73.9	83.8	30.0	70.3	0.9	81.1	0.0	81.1
	2006	109	93.6	87.2	89.9	8.3	77.1	2.8	82.6		
	2007	82	81.7	70.7	75.6	4.9	70.7				
	2008	75	94.7	89.3	90.7						
	2009	58	91.4	82.8							
	2010	67	95.5								
Loyola	2005	118	89.0	79.7	79.7	5.1	73.7	0.8	78.0	0.0	78.8
	2006	119	94.1	85.7	85.7	5.0	77.3	1.7	83.2		
	2007	125	91.2	85.6	83.2	8.0	73.6				
	2008	135	85.9	80.0	80.0						
	2009	104	86.5	84.6							
	2010	125	90.4								
MD Inst Coll of Art	2005	50	86.0	78.0	76.0	30.0	68.0	2.0	74.0	2.0	74.0
	2006	40	87.5	82.5	80.0	10.0	60.0	5.0	70.0		
	2007	53	88.7	77.4	69.8	5.7	58.5				
	2008	40	85.0	82.5	75.0						
	2009	42	90.5	88.1							
	2010	51	80.4								
McDaniel	2005	255	87.5	77.6	78.0	30.0	70.6	0.4	75.3	0.0	75.7
	2006	257	82.5	73.9	71.6	4.7	64.2	0.8	70.4		
	2007	214	88.3	80.4	80.4	6.1	70.6				
	2008	166	83.7	69.9	71.7						
	2009	195	84.6	77.9							
	2010	286	47.6								
Mt. St. Mary's	2005	198	86.4	79.3	76.8	2.5	70.2	0.0	74.2	0.5	74.7
	2006	180	80.6	73.3	71.1	2.2	68.3	0.0	70.6		
	2007	181	80.1	71.3	65.7	3.3	62.4				
	2008	171	77.2	66.1	64.3						
	2009	175	78.3	72.6							
	2010	132	85.6								
Coll Notre Dame MD	2005	84	71.4	61.9	54.8	30.0	47.6	2.4	50.0	0.0	52.4
	2006	55	74.5	67.3	65.5	1.8	58.2	1.8	58.2		
	2007	56	82.1	67.9	58.9	8.9	53.6				
	2008	43	79.1	65.1	53.5						
	2009	53	79.2	67.9							
	2010	34	64.7								
St. Johns	2005	20	75.0	50.0	55.0	5.0	45.0	0.0	55.0	0.0	55.0
	2006	25	76.0	52.0	52.0	8.0	44.0				
	2007	26	69.2	42.3	42.3	7.7	34.6				
	2008	16	93.8	75.0	81.2						
	2009	13	*	*							
	2010	20	80.0								
Sojourner-Douglas	2005	0	*	*	*	*	*	*	*	*	*
	2006	0	*	*	*	*	*	*	*	*	*
	2007	1	*	*	*	*	*	*	*	*	*
	2008	1	*	*	*	*	*	*	*	*	*
	2009	2	*	*	*	*	*	*	*	*	*
	2010	2	*	*	*	*	*	*	*	*	*
Stevenson (formerly Villa Julie)	2005	371	81.9	72.2	68.7	15.4	49.3	3.5	63.1	0.8	65.8
	2006	428	83.2	73.6	70.3	13.1	53.3	1.9	66.6		
	2007	397	76.3	66.8	64.2	12.8	48.1				
	2008	415	81.4	71.8	69.6						
	2009	275	76.7	66.9							
	2010	388	79.4								
Washington	2005	134	87.3	78.4	75.4	3.0	72.4	1.5	75.4	0.0	76.1
	2006	136	81.6	73.5	72.1	3.7	67.6	0.7	71.3		
	2007	149	83.9	76.5	75.2	5.4	67.8				
	2008	163	82.8	75.5	69.9						
	2009	162	85.2	79.0							
	2010	189	83.1								
All State-Aided Independents	2005	1,565	83.8	72.9	71.4	7.3	60.9	1.3	68.4	0.3	69.6
	2006	1,633	81.9	72.4	70.2	7.7	59.6	1.5	67.4		
	2007	1,557	80.9	70.6	68.1	7.8	58.4				
	2008	1,463	81.8	72.0	69.8						
	2009	1,319	80.3	71.9							
	2010	1,541	74.5								

* N less than 15

Source: MHEC Enrollment and Degree Information Systems